

TSB # 842-0064
Prince Castle
355 East Kehoe Blvd
Carol Stream, IL
60188 Date
11/06/2018



Dear Service Managers/3wire,

In an ongoing effort to ensure quality on our Genuine OEM Equipment we are Issuing a Technical Service Bulletin for our UHC6PT-22MCD Series. This bulletin depicts how to correct diagnoses a defective Temp Sensor Board (OEM Part # 547-208, attached to platen assembly 547-061s).

Issues:

- Previous method of diagnosing TSB was incorrect
- Improper diagnosis of TSB could result in not fixing a heating issue properly

Common Symptoms:

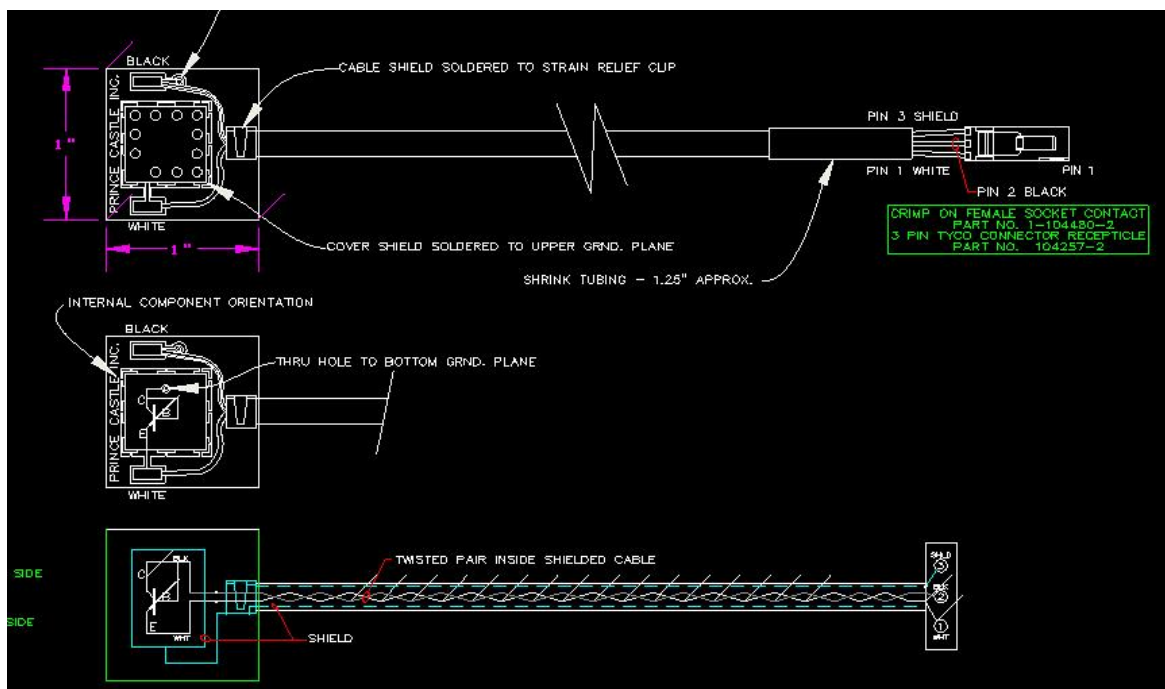
- Rate of Rise Error Code
- High Temp Error Code
- No Temp Reading
- Actual temp reading different than displayed (Beyond 5%) Example Below:
 - Display Temp = 200F
 - Actual Temp = Between 190-210F (Good)
 - Actual Temp = Outside of 190-210F (Bad)

Units effected:

****All Manufactured Serial #'s****

Procedure: Review Procedure steps and OEM print listed below.

OEM Detailed Print:



TSB # 842-0064
Prince Castle
355 East Kehoe Blvd
Carol Stream, IL 60188
Date 11/06/2016

Step # 1:

Gain Access and remove TSB connector from Bus Board

Step # 2:

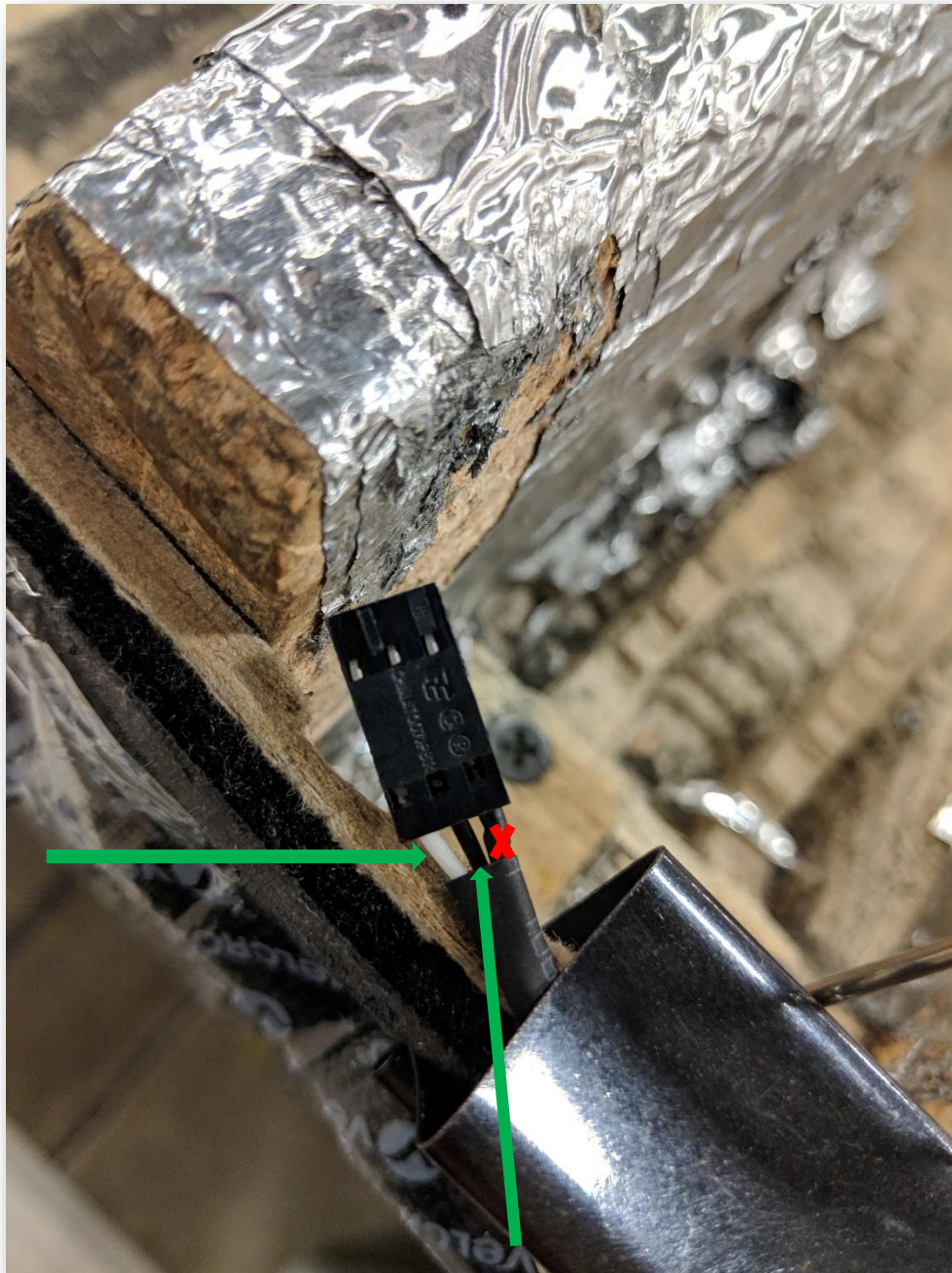
Set Multimeter to Diode Test Mode (Picture below)



TSB # 842-0064
Prince Castle
355 East Kehoe Blvd
Carol Stream, IL 60188
Date 11/06/2016

Step # 3:

Locate Black and White Wires On Back Side of TSB Connector (Do not test shielded wire)



TSB # 842-0064
Prince Castle
355 East Kehoe Blvd
Carol Stream, IL 60188
Date 11/06/2016

Step # 4:

Attach Multimeter Test leads to back side test points on connector.

- **Red** Lead to White Wire
- **Black** Lead to Black Wire
- **Correct Reading .67v +/- 10%**



Sincerely,



Paul Svenningsen

Technical Service Manager U.S.