



Features

Capacitive Touch Control Panel

Simple to use control panel — Select up to 10 precisely measured shot sizes

LED Display

Displays cabinet temperature and product volume information

Patented Load Cell

Improves beverage dispense accuracy within +/- 6%

Removable Drip Tray

Easy-to-clean, one-piece drip tray with stainless steel insert

Heavy-Duty Construction

Stainless steel exterior and interior with reinforced metal hinged door

USB Port Access

Upload software for future menu changes

Cleaning Mode

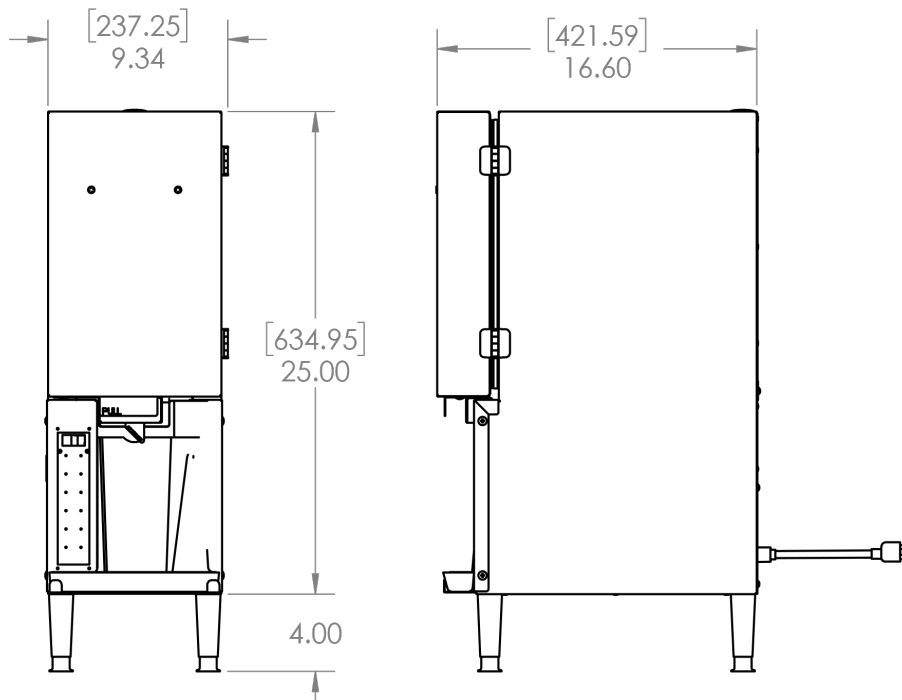
Quick launch clean mode button stops dispensing for 10 seconds during wipe down

Santoprene™ Replaceable Door Gaskets

Easy-to-clean door gasket, tightly seals the refrigerated compartment

Warranty

2-year materials and workmanship
5-year compressor, parts only



Technical Specifications

Product Category	Creamer Dispenser
Product Dimensions	9.3"W x 16.6"D x 29.0"H (23.7cm x 42.2cm x 73.7cm)
Power Requirements	115 VAC, 60 Hz, 12A, Single Phase, NEMA 5-15P
Capacity	1 (5-liter) Bag
Refrigerant	R134A
Exterior Construction	Stainless steel with adjustable leveling legs
Interior Construction	Stainless steel

Unit Weight	70 lbs. (31.8 kg)
Shipping Weight	82 lbs. (37.2 kg)
Shipping Cubic Dimensions	5.0' (0.14 cu. m.)
Warranty	2-year materials and workmanship 5-year compressor, parts only
Agency Listing	ETL/Intertek Conforms to NSF/ANSI STD 20 Conforms to ANSI/UL 471 CSA Listed CAN/CSA-C22.2 No.120

Model Number	Description
SK-2	Creamer Dispenser



To learn more about **Silver King SK-2**, visit mcd.princecastle.com