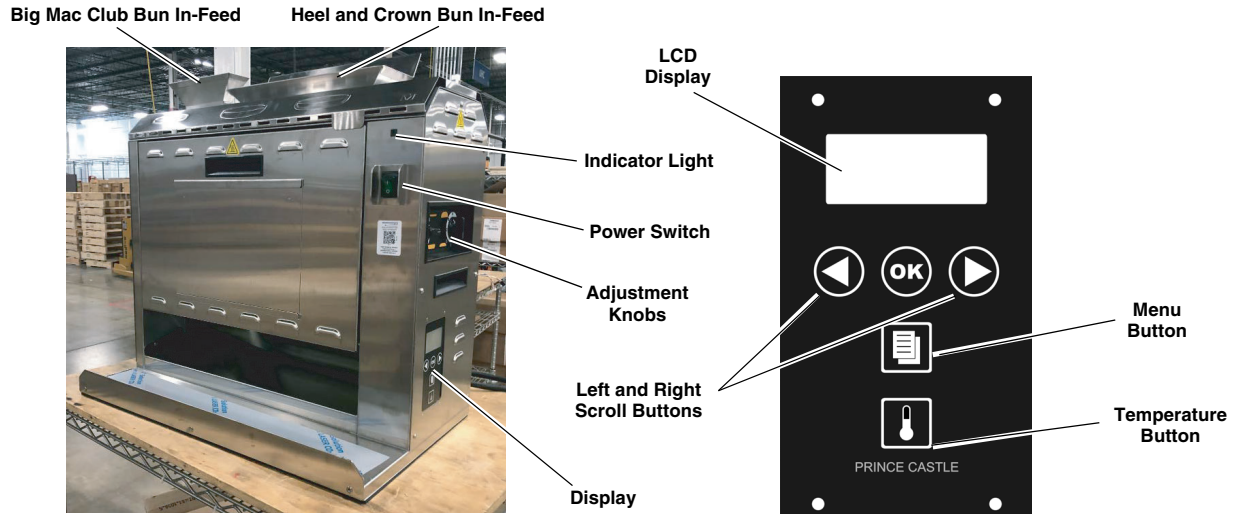


# Service Manual

## Vertical Toaster DCFT-MCD Series

### Product Identification



### LIMITED WARRANTY

This product is warranted to be free from defects in material and/or workmanship for a period of two (2) years from date of original installation, not to exceed 30 months from date of shipment from our factory. Any part or component which proves to be faulty in material and/or workmanship within the warranty period will be replaced or repaired (at the option of Prince Castle, Inc.) without cost to the customer for parts or labor.

This warranty is subject to the following exceptions/conditions:

- Use of any non-genuine Prince Castle parts voids this warranty and all work must be performed by an authorized Prince Castle Service Agent.
- All labor shall be performed during regular work hours. Overtime premium will not be covered.
- Travel charges are limited to 200 kilometers (100 miles) round trip, 2 hours travel time, one trip per repair.
- Damage caused by carelessness, neglect, and/or abuse (e.g., using wrong current, dropping, tampering with or altering electrical components, or improper cleaning) is not covered.
- Equipment damaged in shipment, by fire, flood or an act of God is not covered.
- Damage to non-stick coated surfaces is not covered by this warranty.

Prince Castle will provide replacement parts to customer so customer can replace such parts if they are defective. Replacement instructions are set out in the product's Operation Manual.

PRINCE CASTLE SHALL NOT BE LIABLE FOR INCIDENTAL OR CONSEQUENTIAL DAMAGES, LOSSES, OR EXPENSES. THIS IS PRINCE CASTLE'S ONLY WARRANTY. PRINCE CASTLE MAKES NO OTHER WARRANTY, EXPRESS OR IMPLIED. ALL IMPLIED WARRANTIES OF MERCHANTABILITY AND/OR FITNESS FOR ANY PARTICULAR PURPOSE ARE HEREBY DISCLAIMED AND EXCLUDED.



355 East Kehoe Blvd. • Carol Stream, IL 60188 USA  
Telephone: 630-462-8800 • Toll Free: 1-800-PCASTLE  
Fax: 630-462-1460 • [www.princecastle.com](http://www.princecastle.com)

## Table of Contents

Product Identification . . . . .	1	Remove/Replace Club Assy . . . . .	25
Table of Contents . . . . .	2	Remove/Replace Club Gear Transfer Belt . . . . .	29
Electrical Specifications . . . . .	3	PCB Removal/Replacement . . . . .	32
Safe Service Practices . . . . .	3	Remove/Replace High Limit Switch . . . . .	33
Disconnect Power . . . . .	3	Remove/Replace Conveyor Belt . . . . .	37
Serial Number Matrix . . . . .	3	Remove/Replace Right Side Main Probe . . . . .	39
Tools Required for Servicing Unit . . . . .	4	Remove/Replace Front Club Probe . . . . .	40
Display Menu Options . . . . .	5	Remove/Replace Rear Club Probe . . . . .	41
Management Programming . . . . .	6	Troubleshooting Steps . . . . .	43
Remove Top Cover . . . . .	10	Exploded View and Parts List . . . . .	44
Remove/Replace Front Door Assy . . . . .	11	Wiring Diagram . . . . .	50
Remove/Replace Back Door Assy . . . . .	11	Service Analysis Sheet . . . . .	51
Remove/Replace Club Belts . . . . .	12	Test Points . . . . .	52
Remove/Replace Heel Compression Adjust Assy . . . . .	14	Fault Codes . . . . .	65
Remove/Replace Crown Compression Adjust Assy . . . . .	18	Allowable Labor Limits . . . . .	66
Remove/Replace Membrane Switch and Display Assy . . . . .	22		
Remove/Replace Motor and Drive Train Assembly . . . . .	23		



## Electrical Specifications

**DCFT-MCD International series**  
**Ratings: 208-240V, 4900-6300W, 50/60Hz**  
**DCFT-MCDNA**  
**Ratings: 208 VAC, 5075W, 60 Hz**

## Safe Service Practices

*NOTE: This service manual is intended for use by persons having electrical and mechanical training and a level of knowledge of these subjects considered acceptable in the service trade. Prince Castle cannot be responsible, or assume any liability, for injury or damage arising from the use of this manual.*

To avoid personal injury and/or property damage, it is important that Safe Service Practices be observed, including the following limited examples:

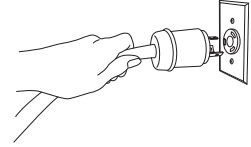
- Do not service the unit without first reading this manual.
- Do not attempt a repair if you have any doubt as to your ability to complete it in a safe manner.
- Do not attempt to repair or replace any component unless all power has been disconnected.
- Prior to returning the unit to service, ensure that:
  - All electrical connections are correct and secure.
  - All safety grounds are correctly and securely connected.
  - All components are properly re-assembled.

## Disconnect Power



**WARNING**

Failure to disconnect power from the unit before servicing could result in severe bodily injury or death. The ON/OFF Switch does not disconnect incoming power to the unit.



## Serial Number Matrix

The manufacture date is encoded in the unit's serial number. The service bench installation date (used to determine warranty coverage) is considered to be the end of the following month. For example:

Serial Number: FJ0000458

Manufacture Date: June 2014

Service Bench Installation Date: July 31, 2014

		SERIAL NUMBER MATRIX								
		2014	2015	2016	2017	2018	2019	2020	2021	2022
		J	K	L	M	N	O	P	Q	R
January	A	AJ	AK	AL	AM	AN	AO	AP	AQ	AR
February	B	BJ	BK	BL	BM	BN	BO	BP	BQ	BR
March	C	CJ	CK	CL	CM	CN	CO	CP	CQ	CR
April	D	DJ	DK	DL	DM	DN	DO	DP	DQ	DR
May	E	EJ	EK	EL	EM	EN	EO	EP	EQ	ER
June	F	FJ	FK	FL	FM	FN	FO	FP	FQ	FR
July	G	GJ	GK	GL	GM	GN	GO	GP	GQ	GR
August	H	HJ	HK	HL	HM	HN	HO	HP	HQ	HR
September	J	JJ	JK	JL	JM	JN	JO	JP	JQ	JR
October	K	KJ	KK	KL	KM	KN	KO	KP	KQ	KR
November	L	LJ	LK	LL	LM	LN	LO	LP	LQ	LR
December	M	MJ	MK	ML	MM	MN	MO	MP	MQ	MR

## Tools Required for Servicing Unit



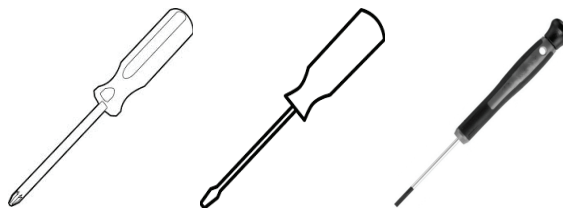
Compression Knob Puller



Stubby Phillips Screw Driver



(2) Vice Grips



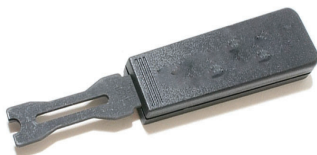
Medium Phillips / Flathead Screwdriver &  
Precision Slotted Screwdriver.



C-Clip Pliers



Selection of Nut Spinners or an Appropriate Small  
Socket Set

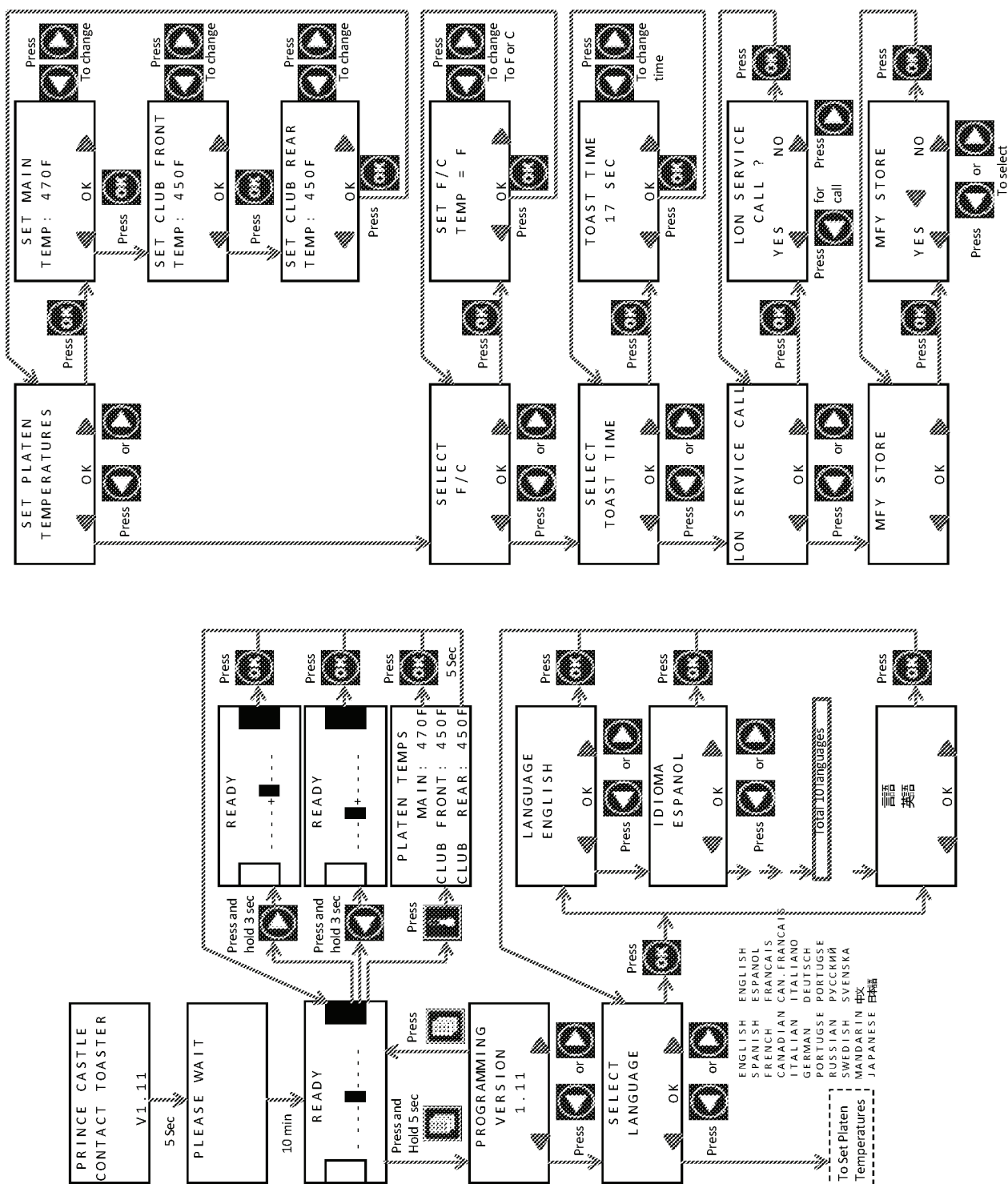


E Ring Tool (A-170)



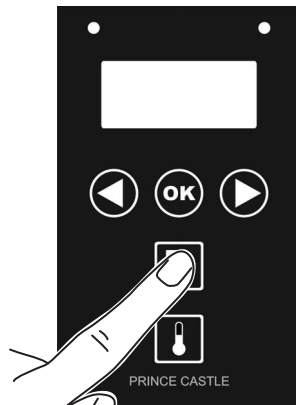
Needle Nose Pliers

## Display Menu Options

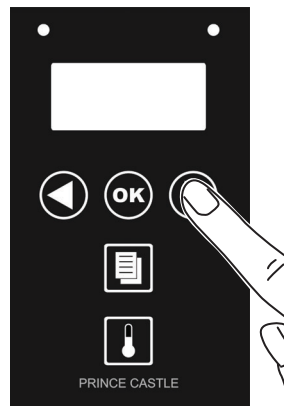


## Management Programming

- 1** Enter program screens. Press and hold the MENU button for 6 seconds. The PROGRAMMING VERSION screen will appear in the LCD display for 10 seconds. From the PROGRAMMING VERSION screen, you may:



Press RIGHT scroll button to advance to the next menu item.

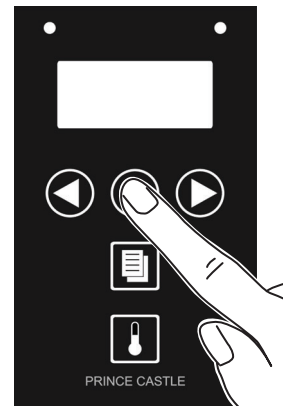


- 2** Choose Fahrenheit or Celsius. From the PROGRAMMING VERSION screen, press the RIGHT scroll button three times.



From the SELECT F/C screen that appears, press the OK button.

- A. From the SET F/C screen that appears, use the LEFT and RIGHT scroll buttons to select TEMP = F (Fahrenheit) or TEMP = C (Celsius).  
B. Accept the new scale by pressing the OK button to return to the SELECT F/C screen.



**NOTE:** To return without accepting the new setting, press the MENU button.

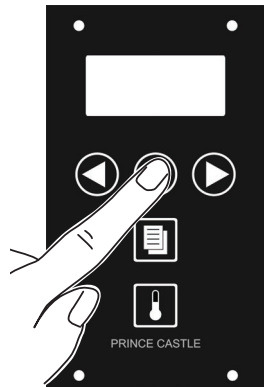
## Management Programming (continued)

- 3** Adjust set point temperatures. From the SELECT F/C screen, press the LEFT scroll button.



From the SET PLATEN TEMPERATURES screen, press the OK button.

- A. From the SET MAIN screen that appears, adjust the platen set point temperature using the RIGHT and LEFT scroll buttons. Accept the new main platen setting by pressing the OK. The SET CLUB FRONT screen will appear.
- B. Press OK button if no change, or use the RIGHT and LEFT scroll buttons to adjust, then press OK to save. Accept the new main platen setting by pressing the OK button. The SET CLUB REAR screen will appear.



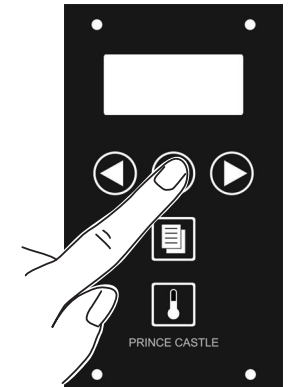
*NOTE: To cancel without accepting the new setting, press the MENU logo button to return to the previous screen.*

- 4** Change language. From the SELECT PLATEN TEMPERATURE screen, press the LEFT scroll button.

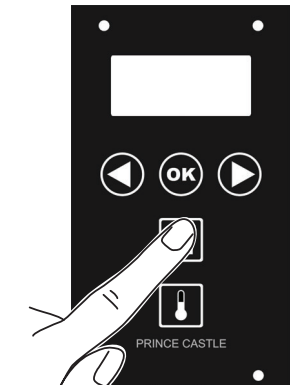


From the SELECT LANGUAGE screen, press the OK button.

- A. From the LANGUAGE screen that appears, use the RIGHT and LEFT scroll buttons to select a different language.
- B. Accept the new language by pressing the OK button to return to the SELECT LANGUAGE screen.



*NOTE: To return without accepting the new setting, press the MENU button.*



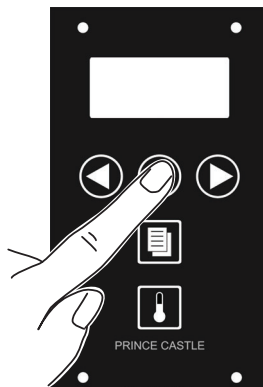
## Management Programming (continued)

- 5** Select Toast Time. From the PROGRAMMING VERSION screen, press the LEFT scroll button three times.



From the SELECT TOAST TIME screen, press the OK button. The current toast time selection will be displayed.

- A. Press LEFT scroll button to decrease the toast time. Press OK button when you reach desired time.
- B. Press RIGHT scroll button to increase the toast time. Press OK button when you reach desired time.



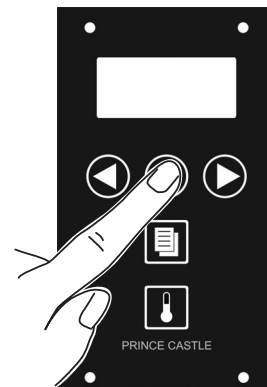
- 6** Select MFY store. From the PROGRAMMING VERSION screen, press the LEFT scroll button once.



From the MFY STORE screen, press the OK button.

In the MFY STORE ? screen:

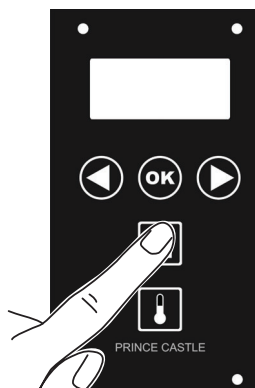
- A. Select YES, (press LEFT scroll button) if it is MFY store. This is the default state for DCFT toaster. All heaters are active.
- B. Select NO, (press RIGHT scroll button) if it is BOP store. This selection will deactivate club platen heaters.



*NOTE: Although club heaters are deactivated, front club platen temperature will display a temperature as high as 193°C/380°F, due to the heat transfer from the main platen, which is normal.*

## Management Programming (continued)

- 7** Exit programming. Press the MENU button from the SELECT F/C, SELECT PLATEN TEMPERATURE or SELECT LANGUAGE screen or leave the controls inactive for 10 seconds.



Toaster Settings		
Description	Factory Presets	New Setting
Main Platen (Buns)	257°C/495°F	
Front Club Platen	254°C/490°F	
Rear Club Platen	257°C/495°F	
Crown Compression	B	
Heel Compression	3	
Toast Time	22 Sec.	
Store (MFY or BOP)	MFY (Club Platens on)	
Language	English	

## Remove Top Cover

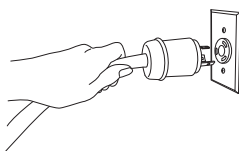
### WARNING

The top cover should be removed any time the unit is being serviced.

### 1 Unplug Unit.

### WARNING

Failure to disconnect power from the unit before servicing could result in severe bodily injury or death. The ON/OFF Switch does not disconnect incoming power to the unit.



### 2 Loosen (2) thumbscrews on top cover.



### 3 Remove Teflon sheet.



### 4 Lift top cover off unit.



### Remove/Replace Front Door Assy

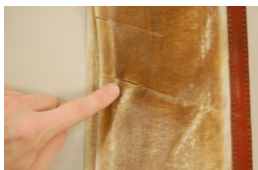
- 1** Lift up handle to open front door.
- 2** On right side of door, remove two screws that secure pivot hinge to door. Set screws and hinge aside.
- 3** Lift door off left side of housing and capture washer on door peg. Set door and washer aside. Note the position of the washer. If installed improperly, door switch will be inoperable.
- 4** To replace door, place washer on left door peg and insert door into mounting hole on left side of housing.
- 5** On right side of housing, insert pivot hinge into mounting hole.
- 6** Position right side of door under hinge and secure with two screws.
- 7** Raise door and engage handle to secure door to housing.

### Remove/Replace Back Door Assy

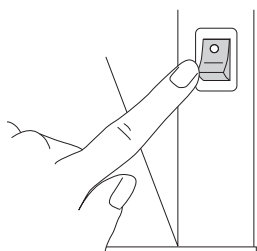
- 8** Lift up handle to open back door.
- 9** On right side of door, remove two screws that secure pivot hinge to door. Capture washer on pivot hinge. Set screws, washer, and hinge aside.
- 10** Lift door off left side of housing. Set door aside.
- 11** To replace door, insert left door peg into mounting hole on left side of housing.
- 12** On right side of housing, insert pivot hinge and washer into mounting hole.
- 13** Position right side of door under hinge and secure with two screws.
- 14** Raise door and engage handle to secure door to housing.

## Remove/Replace Club Belts

Depending on toaster use, the club belts should be replaced approximately every 6 months. Belts should be replaced if worn or torn.

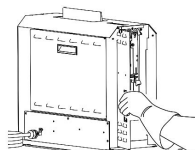
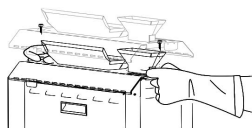
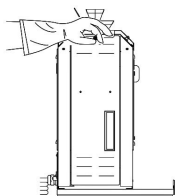


- 1 Turn toaster OFF and unplug toaster.



- 2 Put on a pair of high temperature gloves.

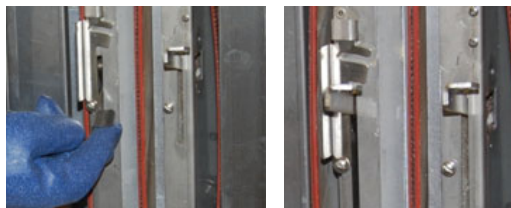
- 3 Remove top cover. Loosen thumbscrew on left side panel. Pivot club door to expose machinery inside.



- 4 Pivot latch arm and secure in metal clip.



- 5 Remove belt tension by pivoting tension arms up.



- 6 Remove old belts.



- 7 Install new belts.



## Remove/Replace Club Belts (continued)

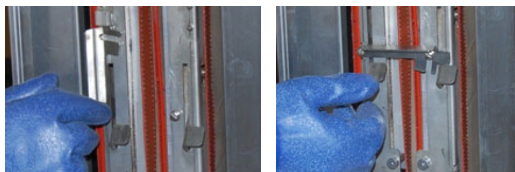
**8**

Be sure that bead on belt rides in groove in belt rollers.



**9**

Pivot tension arms down and pivot and engage latch arm.



**10**

Swing door closed and secure side cover.  
 Tighten thumbscrew to secure left side panel.



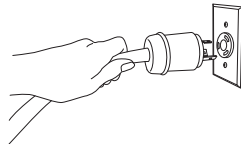
## Remove/Replace Heel Compression Adjust Assy

- 1 Unplug the unit.



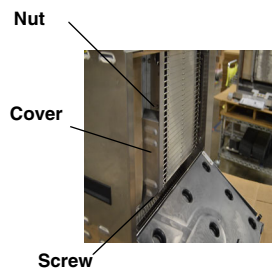
### WARNING

Failure to disconnect power from the unit before servicing could result in severe bodily injury or death. The ON/OFF Switch does not disconnect incoming power to the unit.

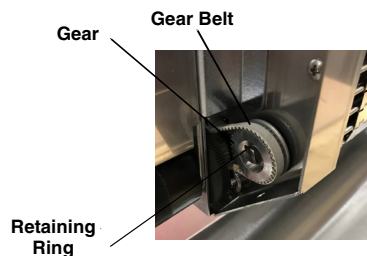


- 2 Open and remove front door. Set door aside.

- 3 Remove screw and nut that secure front lower gear cover to immediate support. Set cover, nut, and screw aside.



- 4 Remove retaining ring from shaft. Set ring aside.



- 5 Remove belt from pulley and let hang in place.

- 6 Slide gear off shaft and set aside.

- 7 Remove second retaining ring from drive shaft. Set ring aside.

Retaining Ring

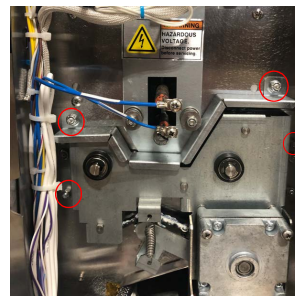


- 8 Remove compression knobs from right side panel.

- 9 Remove screws (7) that secure right side panel to frame. Set screws aside.

- 10 Disconnect electrical connectors (2) from panel. Set panel aside.

- 11 Remove nuts (4) that secure drive train cover and drive train to frame. Disconnect electrical connectors from drive train/motor. Set nuts, cover, and drive train/motor aside.



- 12 Remove screws (3 on left, 3 on right) that secure heel compression assembly to frame. Set screws aside.

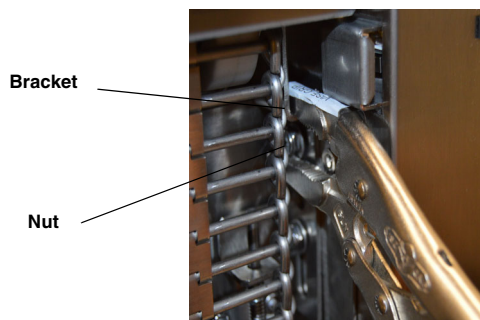
Screws  
(3 on each  
side)

Drive Shaft



## Remove/Replace Heel Compression Adjust Assy (cont.)

- 13** On both left and right side of conveyor belt, secure vice grip to bracket and top nut to hold assembly in position.



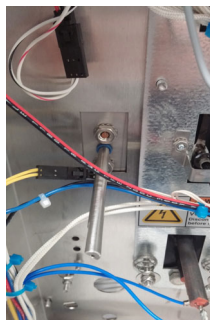
- 14** Slide assembly drive shaft out of bearing.

- 15** Pry assembly on left and right sides to release assembly out of frame.

- 16** Release both vice grips, press downward on top edge of assembly and pull assembly out of frame. Set assembly aside.

## Remove/Replace Heel Compression Adjust Assy (cont.)

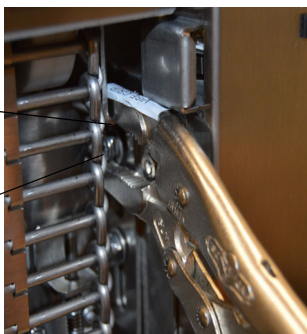
- 17** Feed camshaft through square opening in frame.



- 18** Use leverage in order to secure left and right sides of conveyor into frame.

Bracket

Nut



- 20** Install Sprocket shaft and feed through intermediate support bearing.



- 21** Attach (2) E-clip to sprocket shaft (Both front and back side of bearing)



- 22** Install club transfer gear with 5/64" set screw.



- 23** Use C-Clip tool to install C-Clip over gear.



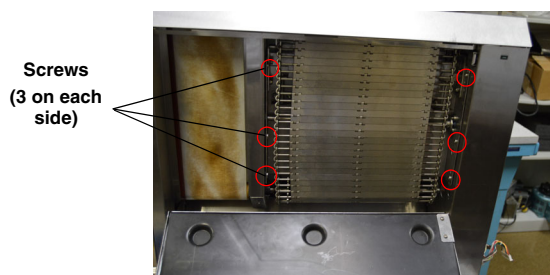


## Remove/Replace Heel Compression Adjust Assy (cont.)

- 24** Install club transfer belt over sprocket shaft gear.



- 25** Install 6 screws with stubby Phillips screw driver.



- 26** Reference Drivetrain Install. Page 24.

- 27** Install front door.

- 28** Install right side panel.

- 29** Plug in Unit.

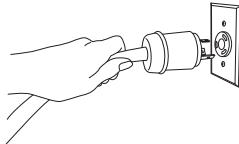
## Remove/Replace Crown Compression Adjust Assy

- 1 Unplug the Unit.



### WARNING

Failure to disconnect power from the unit before servicing could result in severe bodily injury or death. The ON/OFF Switch does not disconnect incoming power to the unit.



- 2 Open and remove back door.

- 3 Remove screw and nut that secure rear gear cover to intermediate support. Set cover, nut, and screw aside.

Nut

Cover

Screw

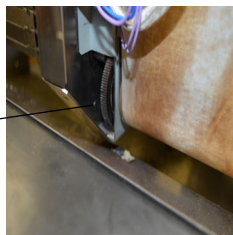


- 4 Loosen thumbscrew on left side panel. Set panel aside.

- 5 Partially remove club assembly. Refer to Page 26, step 15-17.

- 6 Remove retaining ring from shaft. Set ring aside.

Retaining Ring



- 7 Remove compression knobs from right side panel.

- 8 Remove screws (7) that secure right side panel to frame. Set screws aside.

- 9 Disconnect electrical connectors (2) from panel. Set panel aside.

- 10 Remove nuts (4) that secure drive train cover and drive train to frame. Disconnect electrical connectors from drive train. Set nuts, cover, and drive train aside.

Drive Train Cover Nuts



- 11 Cut cable ties along bottom half of bundled wires coming from crown heater.

Cable Ties

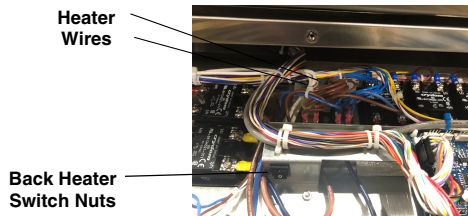




**Remove/Replace Crown Compression Adjust Assy (cont.)**

- 12** Remove screws (5) that secure Electronics Tray to frame. Set screws aside. Slide tray out so that it is fully extended.

- 13** Disconnect heater wires connected to Back Heater Switch.

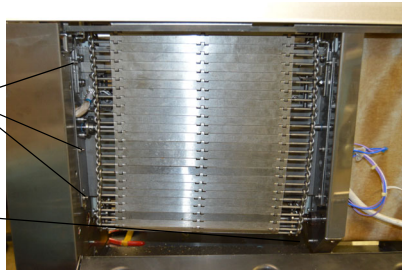


- 14** Follow heater wires back through tray and cut any cable ties that hold the wires to the tray.

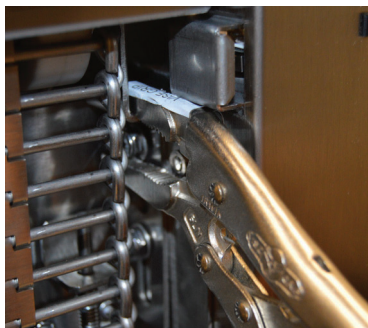
- 15** Remove screws (3 on left, 3 on right) that secure crown compression assembly to frame. Set screws aside.

Screws  
 (3 on each  
 side)

Drive  
 Shaft



- 16** On both left and right side of conveyor belt, secure vice grip to bracket and top nut to hold assembly in position.



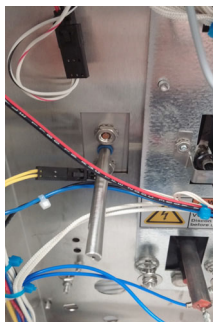
- 17** Slide assembly drive shaft out of bearing.

- 18** Pry assembly on left and right sides to release assembly out of frame.

- 19** Release both vice grips, press downward on top edge of assembly and pull assembly out of frame. Set assembly aside.

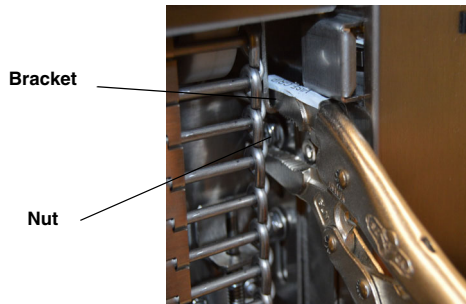
## Remove/Replace Crown Compression Adjust Assy (cont.)

- 20** Feed camshaft through square opening in frame.

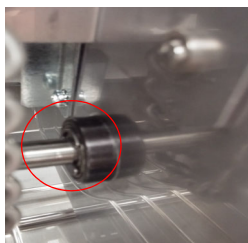


- 21** Use leverage to secure left and right sides of conveyor into frame.

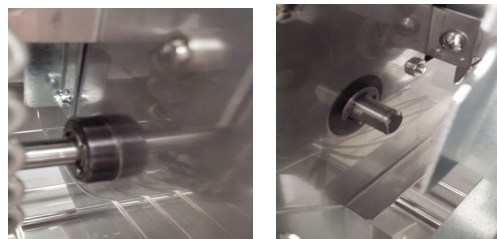
- 22** On both left and right side of conveyor belt, secure vice grip to bracket and top nut to hold assembly in position.



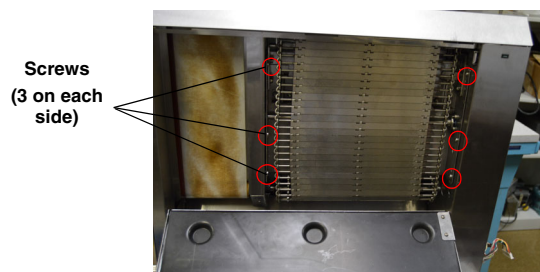
- 23** Install Sprocket shaft and feed through intermediate support bearing.



- 24** Attach (2) E-Clips to sprocket shaft both front and back.

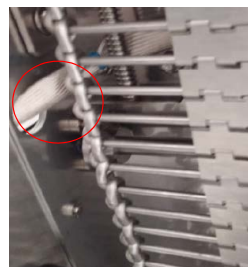


- 25** Install 6 screws with stubby Phillips screw driver.



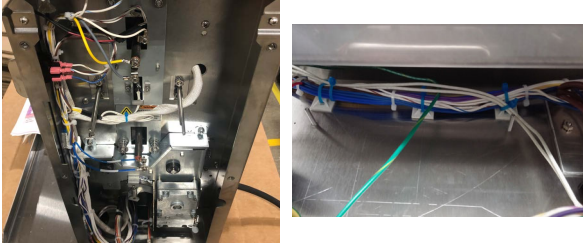
- 26** Reference Club Transfer gear belt install. Page 29.

- 27** Route crown heater wire through hole in frame.

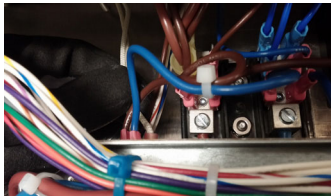


## Remove/Replace Crown Compression Adjust Assy (cont.)

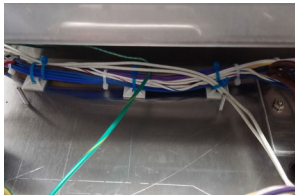
- 28** Dress wire with existing harness (USE HIGH HEAT ZIP TIES.)



- 29** Connect wires into back heater switch.



- 30** Use zip-ties and secure to electrical tray.



- 31** Use Phillips screw driver to install (5) screws to electronics tray.



- 32** Reference D/T Install. Page 23.

- 33** Install back door.

- 34** Install right side panel.

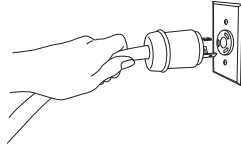
- 35** Plug in unit.

## Remove/Replace Membrane Switch and Display Assy

**1** Unplug the unit.

**⚠ WARNING**

Failure to disconnect power from the unit before servicing could result in severe bodily injury or death. The ON/OFF Switch does not disconnect incoming power to the unit.



**2** Remove compression knobs (2) from knob pins on right side panel. Set knobs aside.

**3** Remove screws (7) that secure right side panel to frame. Set screws aside.

**4** Lift right side panel off frame.

**5** Disconnect electrical connectors (2) from clips on back side of membrane switch.

**6** Straighten mounting tabs (4) that secure display panel to panel.

**7** Lift display panel off side panel.

**8** Position new display panel onto mounting tabs (4) on right panel.

**9** Bend tabs to secure display panel to panel.

**10** Connect display panel electrical connectors (2) to corresponding clips on back side of membrane switch. Note - connectors are keyed.

**11** Position right side panel on frame and secure with screws (7).

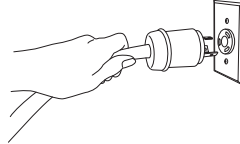
**12** Insert compression adjust knobs onto knob pins.

## Remove/Replace Motor and Drive Train Assembly

- 1 Unplug the unit.

### WARNING

Failure to disconnect power from the unit before servicing could result in severe bodily injury or death. The ON/OFF Switch does not disconnect incoming power to the unit.



- 2 Remove screws (7) that secure right side panel to frame. Set screws aside.



- 3 Using the compression knob removal tool, Remove compression knobs from right side panel.

- 4 Remove right side panel from unit.

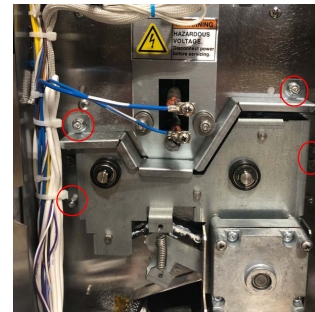
- 5 Disconnect electrical connectors (2) from right side panel. Set panel aside.

- 6 On both left and right side of conveyor belt, secure vice grip to bracket and top nut to hold assembly in position.

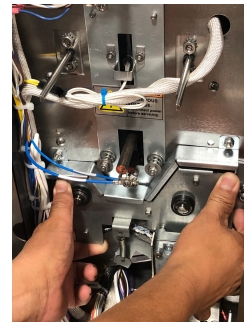


- 7 Repeat step 6 with reverse side.

- 8 Remove 3/8" nuts (4) that secure drive train cover and drive train to frame. Disconnect electrical connectors from drive train/motor. Set nuts, cover, and drive train/motor aside.



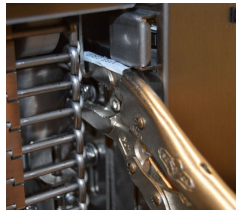
- 9 Grasp drive train firmly, and pull straight back to remove.





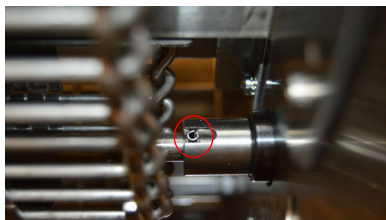
## Remove/Replace Motor and Drive Train Assembly (cont.)

- 10** Ensure the vice grips are still in place on both sides of the unit.

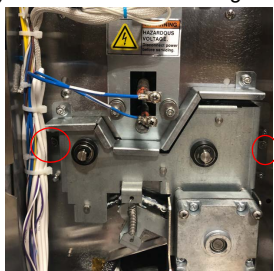


- 11** Align drive train to holes in the sheet metal.

- 12** Align shaft pins with slotted gear on both sides.

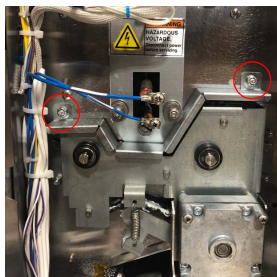


- 13** Install (2) 3/8" drive train mounting nuts.



- 14** Remove vice grips on both sides. Close front and back doors.

- 15** Install (2) 3/8" chain guard nuts.



- 16** Re-Connect motor power plug.

- 17** Re-connect display and overlay wires to right side panel.

- 18** Align panel to DCFT. Install (7) screws.

- 19** Install both compression knobs.

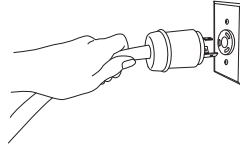
- 20** Plug in unit.

## Remove/Replace Club Assy

- 1 Unplug the unit.

### **WARNING**

Failure to disconnect power from the unit before servicing could result in severe bodily injury or death. The ON/OFF Switch does not disconnect incoming power to the unit.



- 2 Open front door.

- 3 Remove left side panel by loosening the thumb screw.

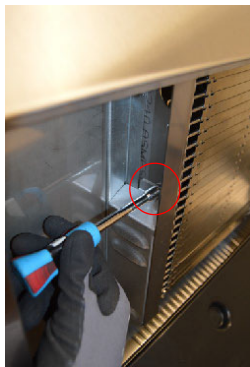
- 4 Open the club latch.

- 5 Lift tensioner arm.

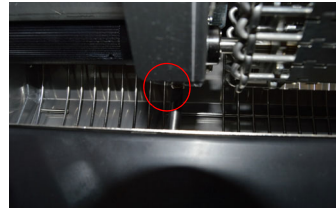
- 6 Slide off club belt.

- 7 Repeat steps 5 and 6 for other belt.

- 8 Use the 11/32" nut driver to remove front cover top nut.



- 9 Use flathead screwdriver to remove bottom front cover screw.



- 10 Pull out front cover.

- 11 Open back door.

- 12 Use the 11/32" nut driver to remove back cover top nut.

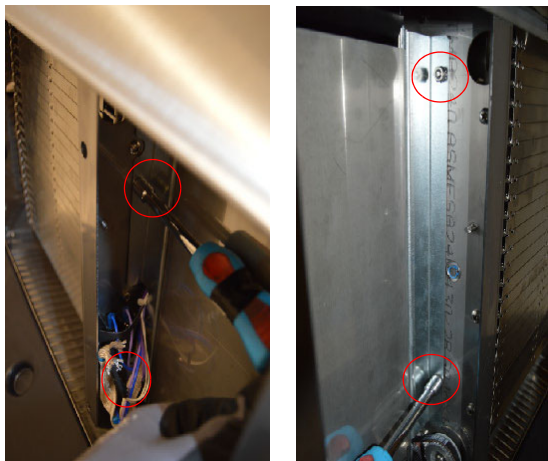
- 13 Use flathead screw driver to remove back cover bottom flathead screw.



- 14 Pull out back cover.

## Remove/Replace Club Assy (cont.)

- 15** Use 11/32" nut driver to remove (4) main club assembly nuts. (Both front and back)



- 18** Disconnect (2) probe connectors.



- 19** Unhook and remove high limit switch probe.



**CAUTION:** Remember to tuck wires behind hook to avoid wires pinching.

- 16** Use 5/32" T Handle to remove (2) club platen bolts.



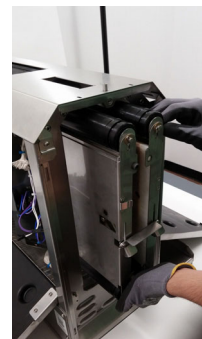
- 20** Cut top zip tie holding wires together.



- 17** Use stubby Phillips screw driver to disconnect all wires to terminal block.



- 21** Pull out club assembly.





## Remove/Replace Club Assy (cont.)

- 22** Slide in club assembly partially.



- 23** Use flat head screwdriver to open clip and put excess high limit switch wire underneath



- 24** Install high limit switch into club platen. (Apply AOS Silicone paste if necessary)



- 25** Close clip over excess wire.

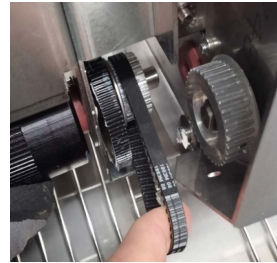
- 26** Connect temp probe wires (Red/White female to White male) and (Purple Female to Red/White Male)

- 27** Use high temp zip tie to secure high limit switch and club harness (Zip-tie that was removed).



- 28** Tuck excess wire slack so it does not get pinched when installing club.

- 29** Put belt on club transfer gear.



- 30** Align club shafts with bearing holes.

- 31** Wrap belt over shaft drive gear.



- 32** Push down club assembly into unit evenly.

- 33** Use 11/32" nut driver to attach (4) main club assembly nuts.

- 34** Hook cover sheet over terminal block.

- 35** Use 11/32" nut driver to install back terminal cover top nut.

- 36** Use flathead screw driver to install bottom back cover screw.

## Remove/Replace Club Assy (cont.)

- 37** Use 5/32" T handle to install (2) club platen bolts.



- 43** Install left side panel.

- 44** Plug in unit.

- 38** Use 11/32" nut driver to install front cover top nut.



- 39** Use flathead screw driver to install front cover bottom screw.

- 40** Lift club tensioner arms.

- 41** Install both club belts.



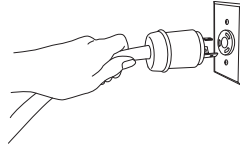
- 42** Close club latch.

## Remove/Replace Club Gear Transfer Belt

- 1 Unplug the unit.

### **WARNING**

Failure to disconnect power from the unit before servicing could result in severe bodily injury or death. The ON/OFF Switch does not disconnect incoming power to the unit.



- 2 Open front door.

- 3 Remove left side panel by loosening the thumb screw.

- 4 Open the club latch.

- 5 Lift tensioner arm.

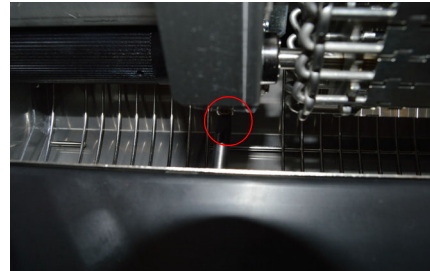
- 6 Slide off club belt.

- 7 Repeat steps 5 and 6 for other belt.

- 8 Use the 11/32" nut driver to remove front cover top nut.



- 9 Use flathead screwdriver to remove bottom front cover screw.

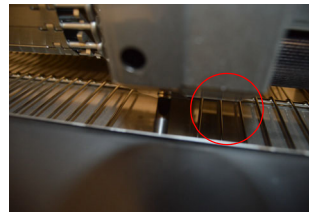


- 10 Pull out front cover.

- 11 Open back door.

- 12 Use the 11/32" nut driver to remove back cover top nut.

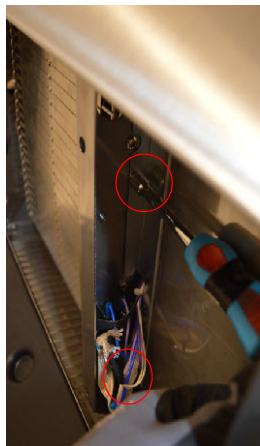
- 13 Use flathead screw driver to remove back cover bottom flathead screw.



- 14 Pull out back cover.

## Remove/Replace Club Gear Transfer Belt (cont.)

- 15** Use 11/32" nut driver to remove (4) main club assembly nuts. (Both front and back)



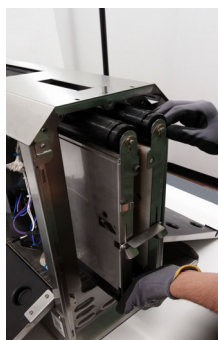
- 18** Remove club gear transfer belt.



- 16** Use 5/32" T Handle to remove (2) club platen bolts.



- 17** Pull club assembly back about 3 inches.



## Remove/Replace Club Gear Transfer Belt (cont.)

- 19** Tuck excess wire slack so it does not get pinched when installing club.

- 20** Put belt on club transfer gear.



- 21** Align club shafts with bearing holes.

- 22** Wrap belt over shaft drive gear.



- 23** Push down club assembly into unit evenly.

- 24** Use 11/32" nut driver to attach (4) main club assembly nuts.

- 25** Hook cover sheet over terminal block.



- 26** Use 11/32" nut driver to install back terminal cover top nut.

- 27** Use flathead screw driver to install bottom back cover screw.

- 28** Use 5/32" T handle to install (2) club platen bolts.

- 29** Use 11/32" nut driver to install front cover top nut.



- 30** Use flathead screw driver to install front cover bottom screw.

- 31** Lift club tensioner arms.

- 32** Install both club belts.

- 33** Close tensioner arms and club latch.

- 34** Install left side panel.

- 35** Plug in unit.

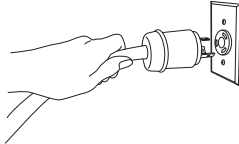


## PCB Removal/Replacement

- 1** Unplug the unit.

**! WARNING**

Failure to disconnect power from the unit before servicing could result in severe bodily injury or death. The ON/OFF Switch does not disconnect incoming power to the unit.

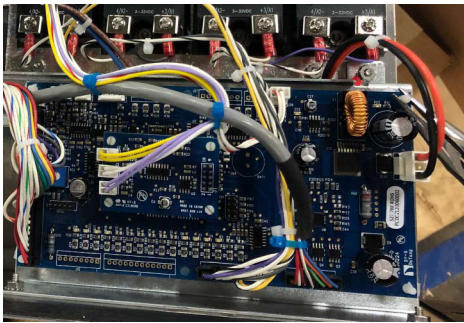


- 2** Use a Phillips screw driver to remove (5) screws holding electronics tray.

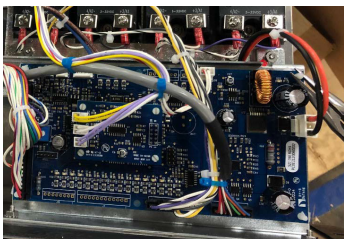


- 3** Pull out electronics tray.

- 4** Remove all (9) connections on the PCB.



- 5** Use needle nose pliers to remove PCB from (4) outside plastic stands.



- 6** Push new board evenly on to 4 outside plastic stands.

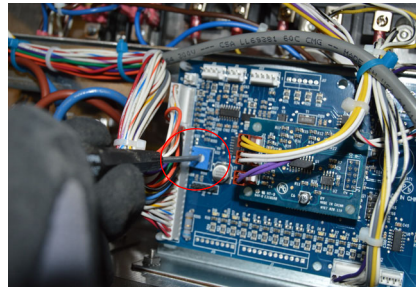
- 7** Reconnect all (9) connections.

- 8** Plug in unit.

**! WARNING**

Proceed with caution after plugging in unit.  
**RISK OF ELECTRICAL SHOCK**

- 9** Use small flathead screwdriver to adjust display with display adjuster until lettering is clear on overlay display.



- 10** Unplug the unit.

- 11** Push in the electronics tray.

- 12** Use Phillips screwdriver to install electronics tray with (5) screws.

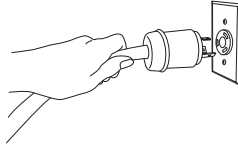
- 13** Plug in the unit.

## Remove/Replace High Limit Switch

- 1** Unplug the unit

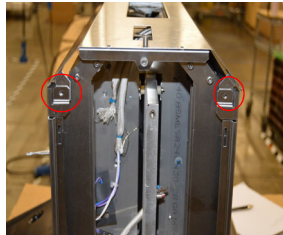
**⚠ WARNING**

Failure to disconnect power from the unit before servicing could result in severe bodily injury or death. The ON/OFF Switch does not disconnect incoming power to the unit.

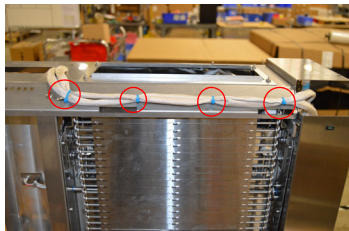


- 2** Refer to Crown Removal steps. Page 18.

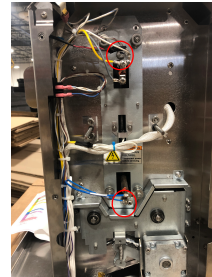
- 3** Remove top cover by removing (4) screws. There are (2) screws on each side of the unit.



- 4** Cut (4) zip ties.



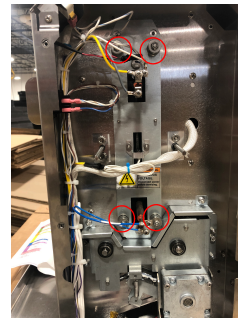
- 5** Remove (2) main platen bolts.



- 6** Remove intermediate support from platen. This will include (2) screws, (4) spacers, and (1) heat guard.



- 7** Remove (4) 3/8" nuts on left side of unit to release the (4) springs.



- 8** Standing from the rear side of the unit, slide the platen to the left, until the probe cover is revealed.

## Remove/Replace High Limit Switch (cont.)

**9**

Remove (2) screws to reveal the probe.



**10**

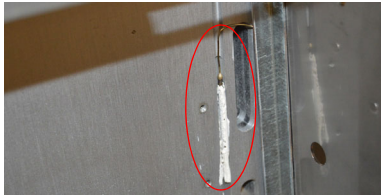
Pull the high limit switch out of unit.



## Remove/Replace High Limit Switch (cont.)

- 12** Feed new high limit switch through sleeve.

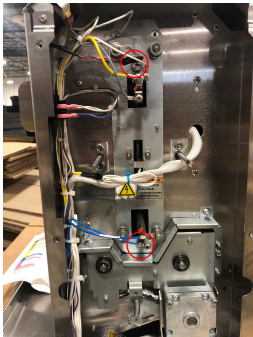
- 13** Apply AOS Silicon to high limit probe, and install to platen.



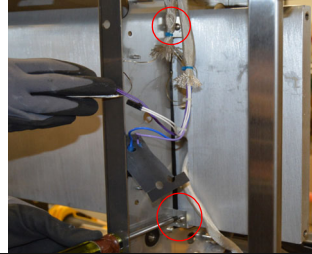
- 14** Install high limit bracket to secure the probe to the platen.



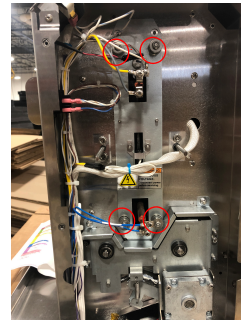
- 15** Install main platen bolts, and spacers onto unit. DO NOT TIGHTEN THE BOLTS.



- 16** Install Intermediate support from platen. This will include (2) screws, (4) spacers, and (1) heat guard. Tip: It will be easier to install the top first, then the bottom.



- 17** Reinstall (4) 3/8" nuts, (4) springs, and (4) washers on left side of unit.



- 18** Tighten main platen bolts.

- 19** Refer to Crown Re-installation. Page 20.

- 20** Refer to Club Re-installation. Page 27.

## Remove/Replace High Limit Switch (Cont.)

- 22** Install (4) high temperature zip ties to top of unit.



- 23** Reinstall top cover, and side panels to unit.

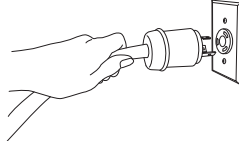
- 24** Plug in unit.

## Remove/Replace Conveyor Belt

- 1** Unplug Unit.

**⚠ WARNING**

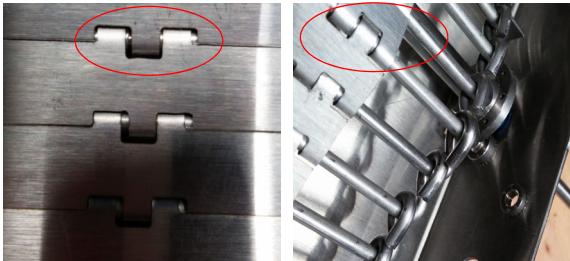
Failure to disconnect power from the unit before servicing could result in severe bodily injury or death. The ON/OFF Switch does not disconnect incoming power to the unit.



- 2** Remove front door.

- 3** Reference Drive Train Removal. Page 23.

- 4** Turn belt to find master link.



- 5** Compress belt using (1) vice grip on each side.



- 7** Use needle nose pliers to push out link.



- 8** Slide out link shaft from belt.



- 9** PULL OUT BELT FROM TOP TO AVOID DAMAGE TO OTHER COMPONENTS.

## Remove/Replace Conveyor Belt (cont.)

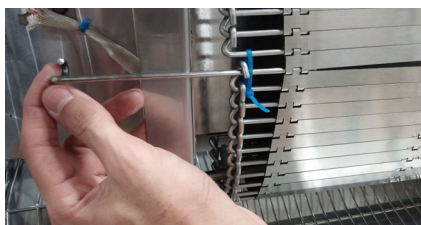
- 10** Feed in new belt from top with links in direction shown.



- 11** Use (1) zip-tie to help line up belt sections.



- 12** Slide master link through both ends until they meet.



- 14** Install front door.

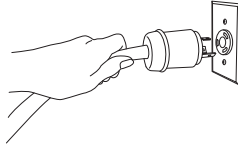
- 15** Plug in unit.

## Remove/Replace Right Side Main Probe

- 1 Unplug unit.

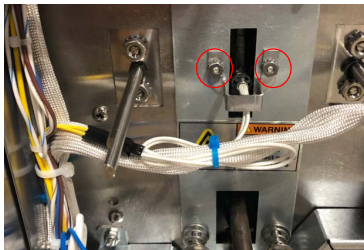
### **WARNING**

Failure to disconnect power from the unit before servicing could result in severe bodily injury or death. The ON/OFF Switch does not disconnect incoming power to the unit.



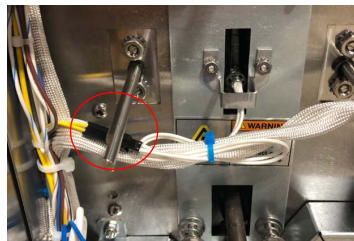
- 2 Remove right side panel

- 3 Use 5/16" nut driver to remove (2) nuts holding probe bracket.



- 4 Cut zip-tie.

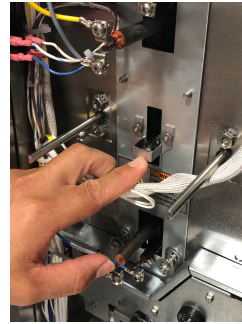
- 5 Unplug probe connector from yellow harness wire.



- 6 Remove probe.

- 7 Apply AOS Silicone to new probe.

- 8 Push probe into platen opening.



- 9 Position probe wires to run underneath bracket.



- 10 Use 5/16" nut driver to install probe bracket.

- 11 Plug in probe to yellow harness wire.

- 12 Use one zip-tie to dress wiring.

- 13 Install right side door.

- 14 Plug in unit.

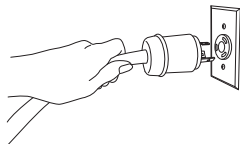


## Remove/Replace Front Club Probe

- 1 Unplug unit.

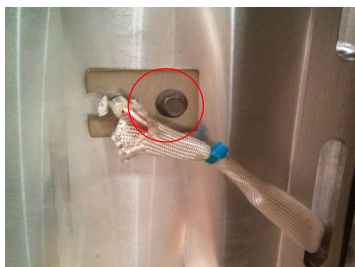
**⚠ WARNING**

Failure to disconnect power from the unit before servicing could result in severe bodily injury or death. The ON/OFF Switch does not disconnect incoming power to the unit.



- 2 Refer to Club Removal. Page: 25.

- 3 Use 5/16" nut driver to remove screw from platen. Remove bracket.



- 4 Remove front club platen probe.

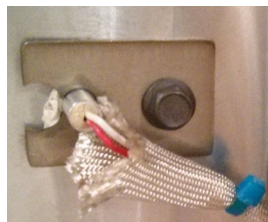
- 5 Cut zip-ties and remove sleeving from probe.



- 6 Feed new probe through sleeving. Secure with zip-ties.

- 7 Apply AOS Silicon to probe.

- 8 Place probe in platen. Secure with bracket and 5/16" screw.



- 9 Feed unsecured end of probe through lower slot in platen.



- 10 After feeding end of probe through platen, reconnect any necessary wiring.



- 11 Refer to club installation. Page: 27.

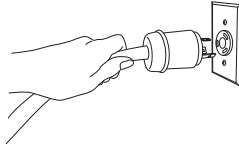
- 12 Feed new probe through sleeving. Secure with zip-ties.

## Remove/Replace Rear Club Probe

- 1** Unplug unit.

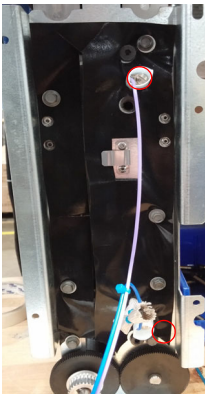
**⚠ WARNING**

Failure to disconnect power from the unit before servicing could result in severe bodily injury or death. The ON/OFF Switch does not disconnect incoming power to the unit.

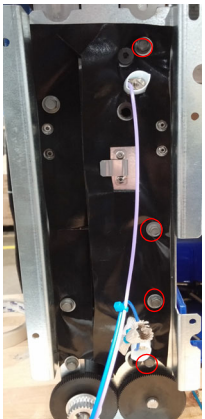


- 2** Refer to club removal. Page 25.

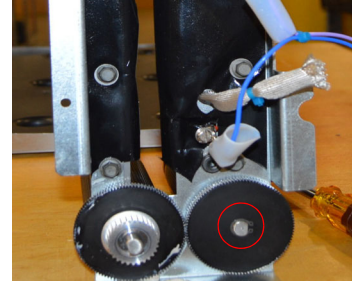
- 3** Remove (2) flathead screws, which will detach the harness.



- 4** Using a 5/16" nut driver, remove (4) bolts.

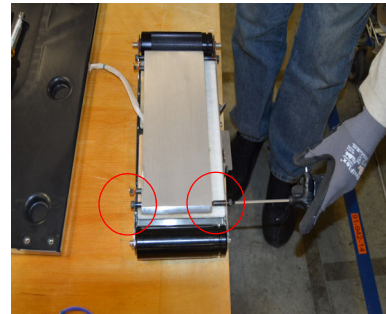


- 5** Using a ring tool, remove ring from gear.

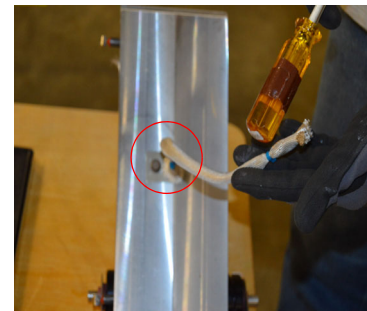


- 6** Remove the rear club half.

- 7** Remove top (2) 5/64" bolts from rear.



- 8** Lift up platen, and remove bolt to reveal the probe.



## Remove/Replace Rear Club Probe (cont.)

**9** Reuse sleeve for the replacement probe. Use zip-tie to secure.

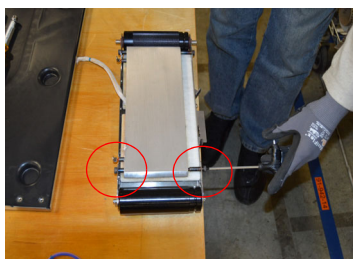
**14** Refer to club re-installation. Page 27.

**10** Replace the probe. Apply AOS Silicon to probe.

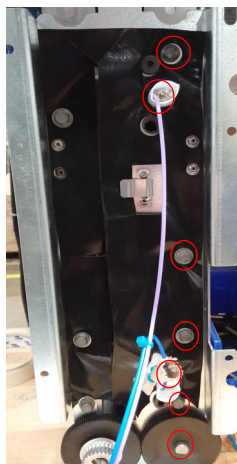
**11** Using a 5/16" nut driver, secure the probe onto the platen.



**12** Replace 2 rear screws.



**13** Replace rear club half. This includes the ring, (4) bolts, and (2) screws.



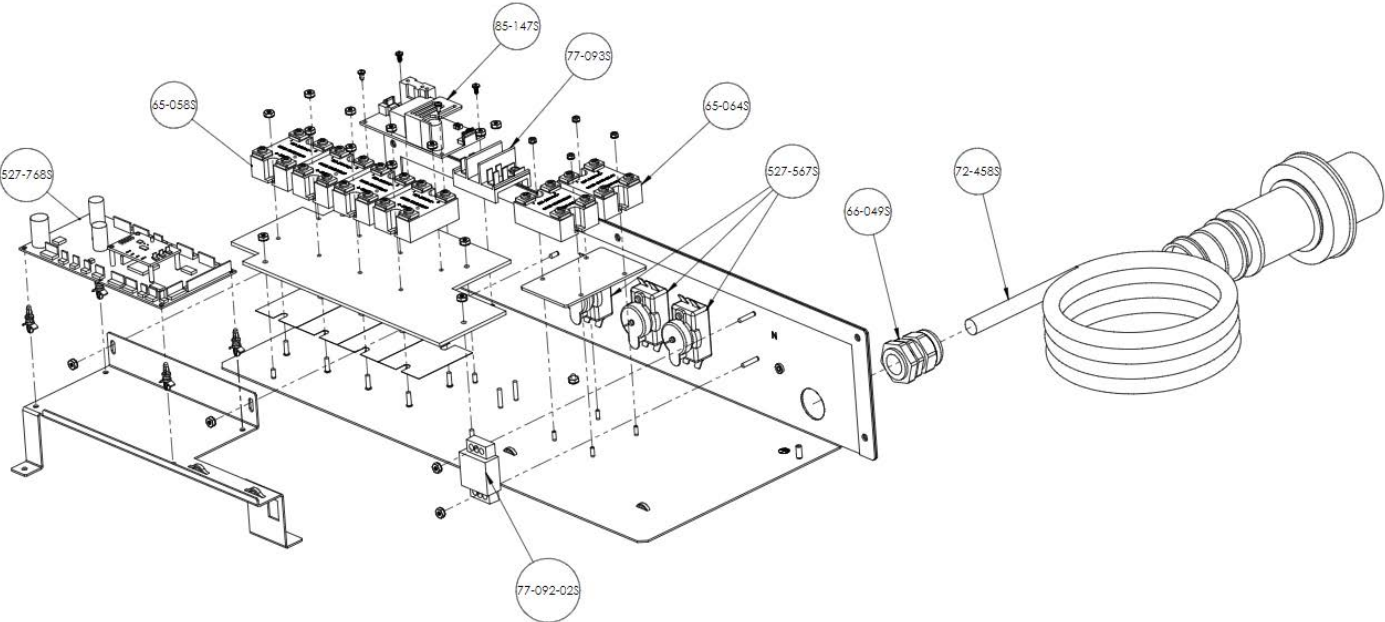


## Troubleshooting Steps

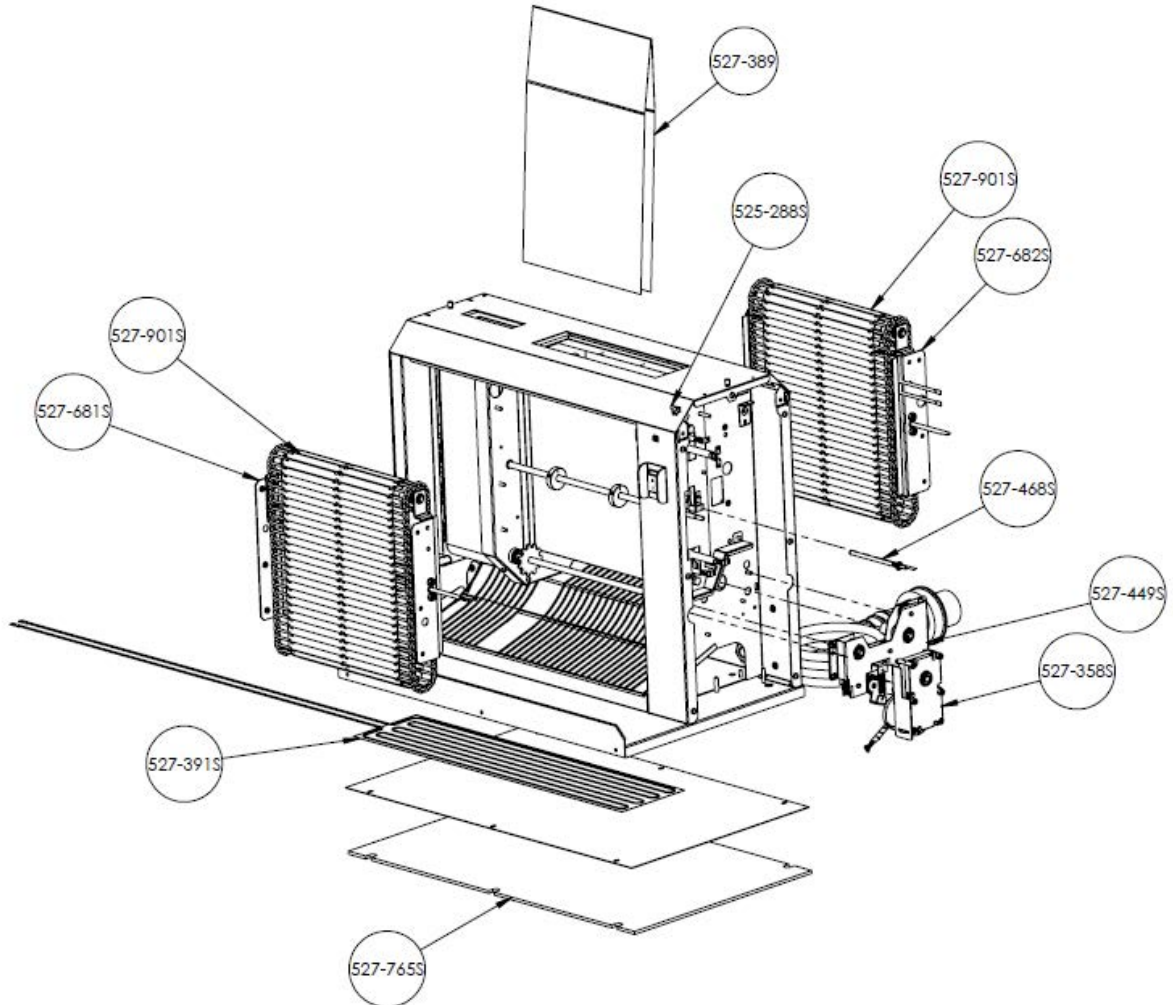
**BURN/ELECTRICAL SHOCK HAZARD! Platen is HOT and can cause severe burns or severe shock.  
 Keep hands and objects out of the toaster unit! Failure to exercise caution may result in serious injury!  
 Turn the unit off, unplug it and let it cool down completely before touching or working on internal apparatus.**

MASTER DISPLAY MESSAGES		
PROBLEM	PROBABLE CAUSE	SOLUTION
Unit will not heat up.	Door ajar.	Ensure front and back doors are fully closed.
	No power to unit.	Ensure power cord is connected to proper receptacle.
	Inoperable power cord.	Replace power cord.
	Loose connection on power switch.	Tighten power switch connections.
	Inoperable power switch.	Replace power switch.
	High limit switch tripped.	Reset high level switch.
	Inoperable temperature probe.	Replace temperature probe.
	Inoperable platen.	Replace platen.
Unit heats up, but the conveyor does not run.	Loose motor switch connection.	Tighten motor switch connection.
	Inoperable motor.	Replace motor.
	Inoperable motor switch.	Replace motor switch.
	Stripped drive gear.	Replace drive gear.
	Loose chain sprockets.	Adjust and tighten sprockets
Unit under- and over-heats, but does not respond to programming.	Check temperature settings.	Adjust temperature set point setting. See Management Programming.
	Inoperable temperature probe.	Replace temperature probe.
Buns under- or over-done.	Check platen adjustment. See Operation Manual.	Move platen adjustment knobs to the correct product part setting.
	Check conveyor temperature. From READY screen, press the INFORMATION button to display the actual platen temperature.	Adjust temperature set point setting. See Management Programming.
	Improper toast time.	Adjust toast time as needed.

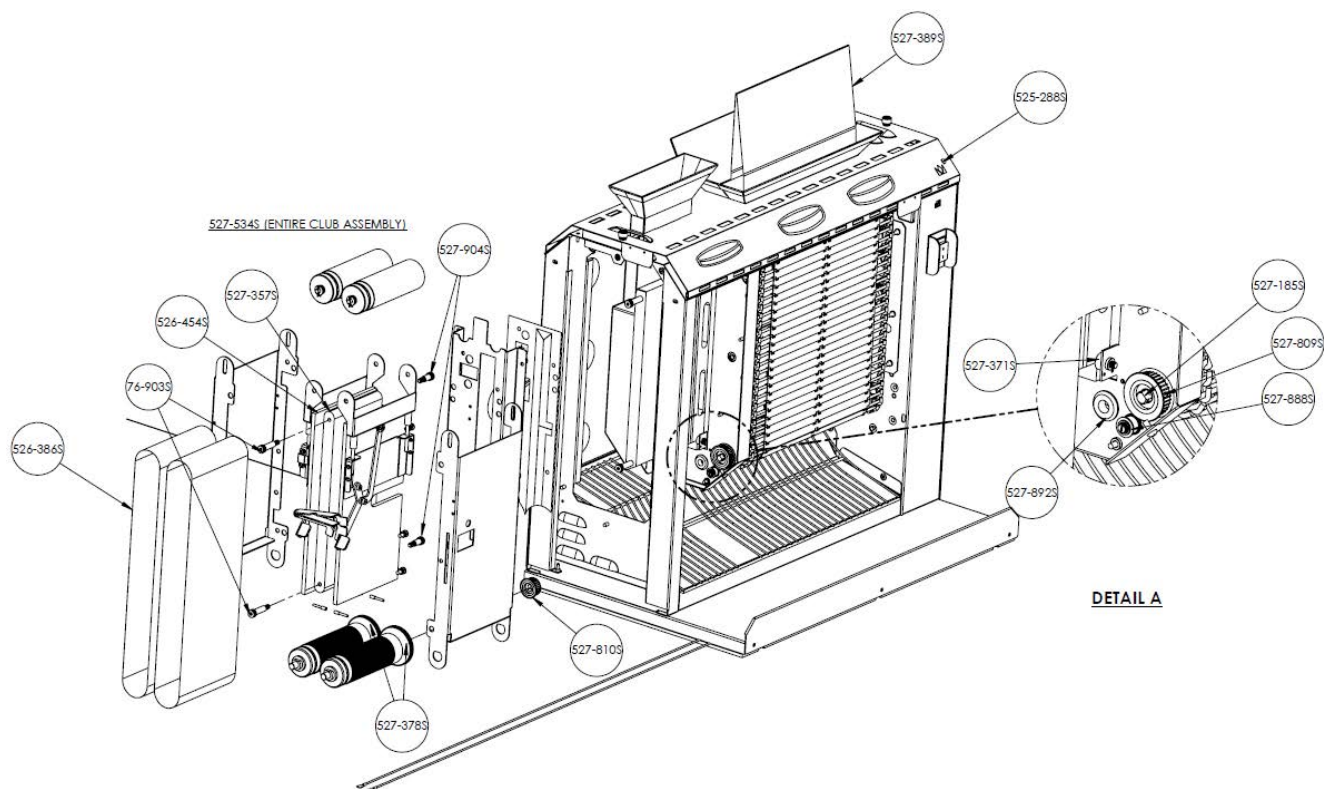
Exploded View and Parts List



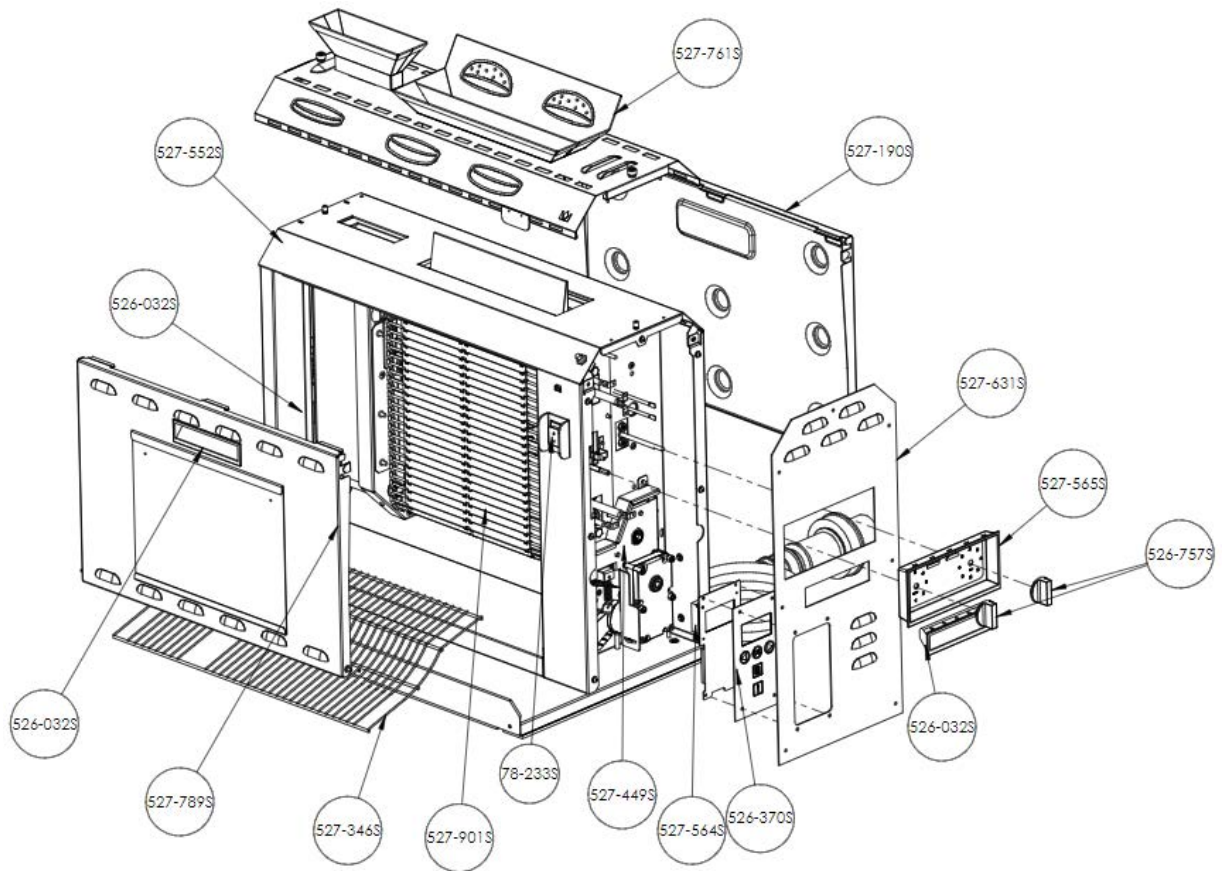
**Exploded View and Parts List**



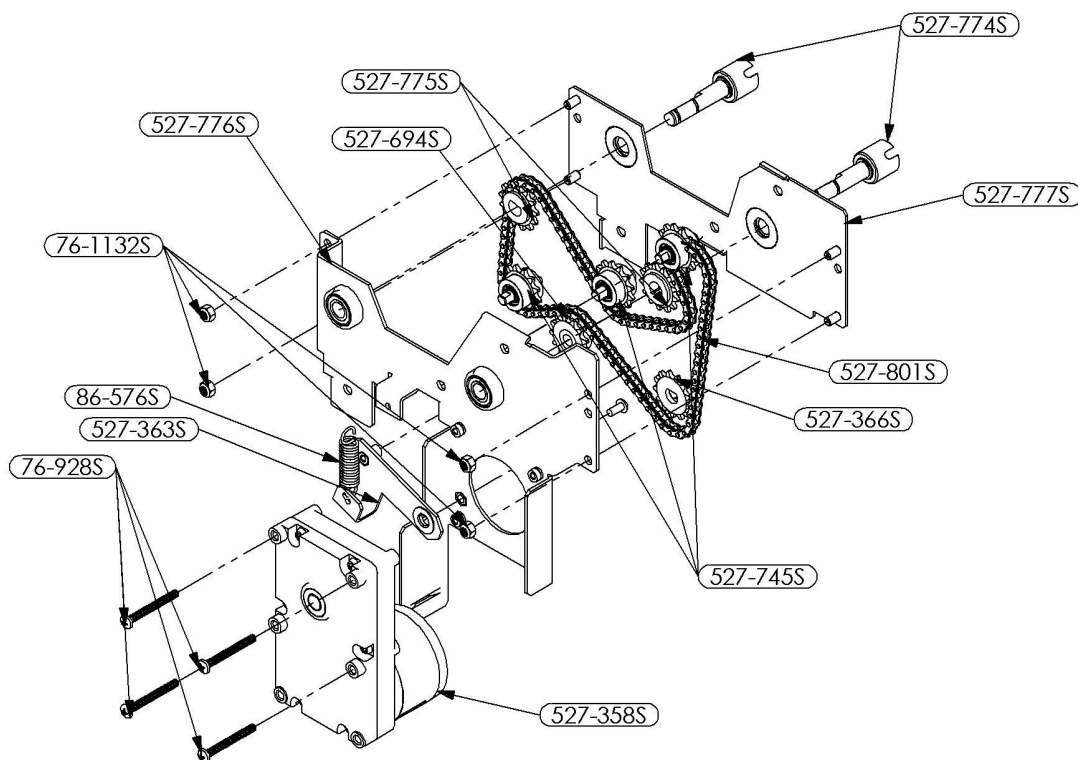
## Exploded View and Parts List



**Exploded View and Parts List**



## Exploded View and Parts List



OEM Part #	Description
527-774S	MCD KIT SPROCKET SHAFT
527-775S	MCD KIT SPROCKET, D, 13T, 0.25P
527-694S	MCD KIT IDLER SPROCKET ASSY
527-776S	MCD KIT DRIVE TRAIN SUP PLATE ASSY
76-1132S	MCD KIT LOCK NUT, M5 X0.8 W/ NYLON (4PK)
86-576S	MCD KIT IDLER SPRING
527-363S	MCD KIT TENSIONER ARM ASSY
76-928S	MCD KIT SCR, 8-32 X 1.5 PHILIPS (4PK)
527-358S	MCD DCFT DRIVE TRAIN MOTOR SERVICE KIT
527-745S	MCD KIT IDLER SHAFT ASSY
527-366S	MCD KIT MOTOR SPROCKET 13T W CLIP
527-801S	MCD KIT CHAIN
527-777S	MCD KIT DRV TRAIN MOUNTING PLATE ASSY



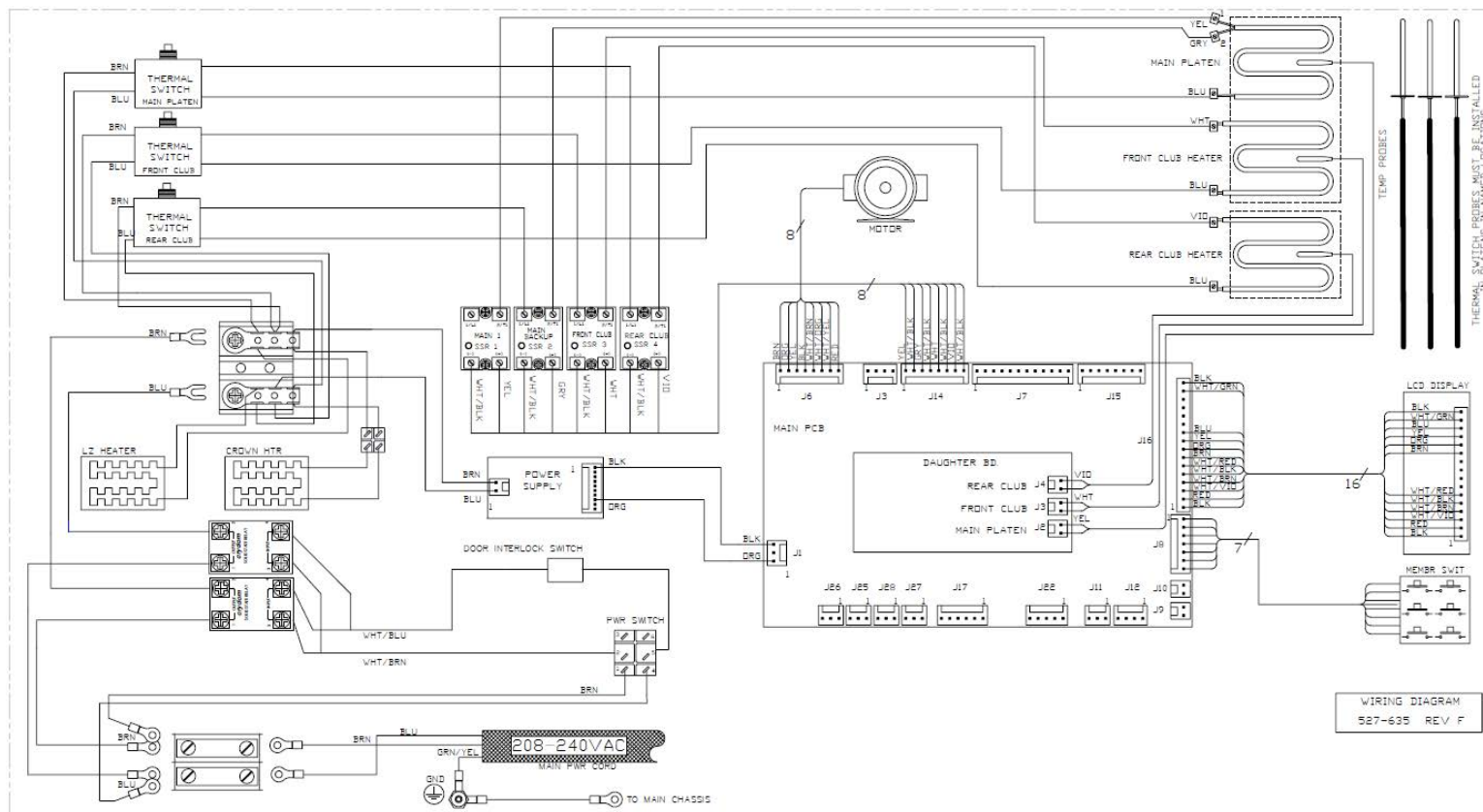
## Exploded View and Parts List

### Parts Not Shown

527-567S	DOUBLE POLE HI-LIMIT SWITCH, 1780 mm CAP TUBE LENGTH
527-467S	MCD DCFT TEMP. PROBE, .305 DIA, RTD (Club REAR [shorter cable & FEMALE connector])
527-636S	MCD DCFT TEMP. PROBE, .305 DIA, RTD314 (Club FRONT [longer cable & MALE connector])
527-468S	MCD DCFT TEMP. PROBE, .250 DIA, RTD (Main Heater)
527-622S	MCD KIT, GASKET, ELECTRICAL PANEL
527-719S	MCD DCFT BACK HEATER SERVICE KIT
527-814S	MCD KIT, BELT. 3 mm HTD HIGH TEMP
77-092-02S	MCD BARRIER STRIP SERVICE KIT
78-252S	DCFT BACK HEATER SWITCH
86-575S	SPRING PIN, SLOTTED
89-1167AS	DRIVETRAIN LUBE 2 oz
95-1880S	KIT, HARNESS, SSR LOGIC CONTROL (from PCB to SSD Relays)
95-1881S	KIT, HARNESS, USER INTERFACE (from PCB to Display, Motor & Button Pad)
95-2102S	Kit, SECONDARY WIRES DCFT (from Power Supply to PCB)
527-769S	MCD ROCKER SWITCH GUARD SERVICE KIT
527-778S	MCD DCFT PLATEN RECOVERY TOOL KIT
527-794S	MCD Ecolab Sock Pad, Pack of 5
527-794SCS	MCD Ecolab Sock Pad, Case Pack of 10
527-821S	Release Sheet Clip

# Vertical Toaster DCFT-MCD Series

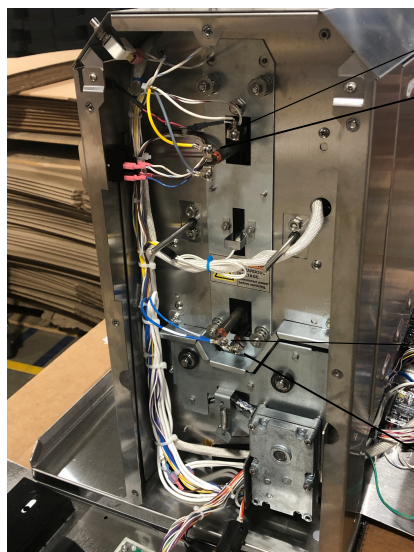
## Wiring Diagram



## Service Analysis Sheet

Test Points	Operating Ranges for DCFT	
	Component	Operating Range
1	Club Platen	38-42 $\Omega$
2	Main Platen	15-20 $\Omega$
3	Main Probe	1084 $\Omega$ @ room temperature
4	Club Probe	1084 $\Omega$ @ room temperature
5	Heater Relays	24-280 VAC (Output Voltage)
		3-32 VDC (Input Voltage)

## Test Points



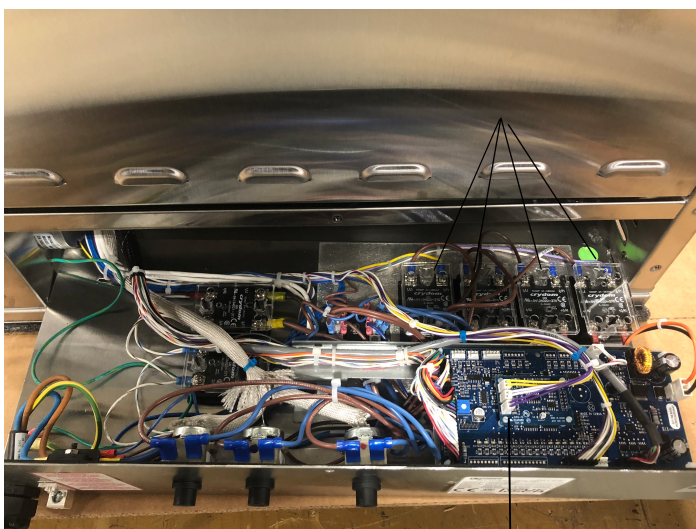
(1) Club Platen (White)

(2) Main Platen (Yellow)





(2) Main Platen Element Return

(1) Club Platen Return

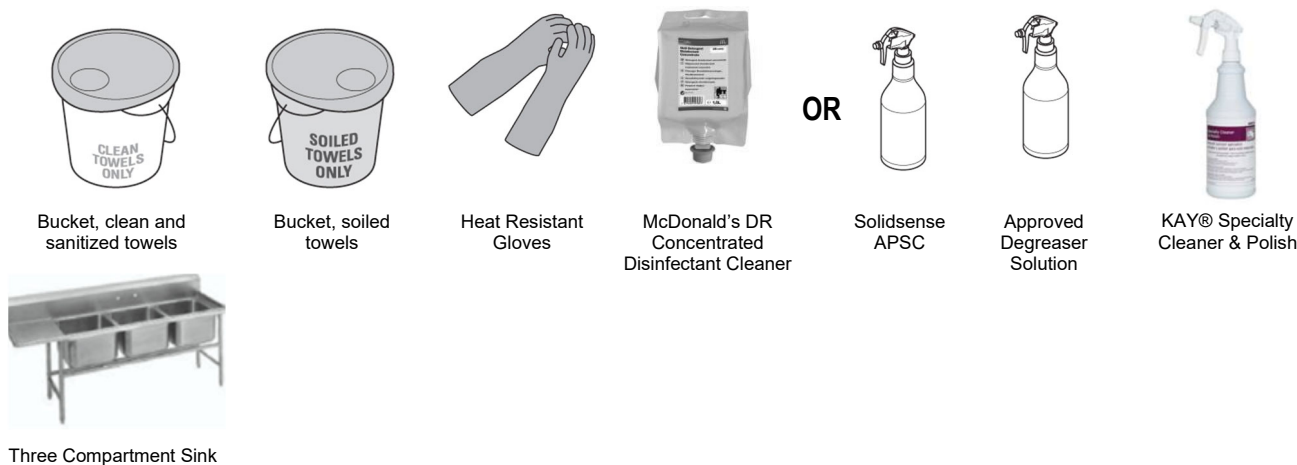
(5) Heater Relays



(3) / (4) Main and Temp PCBs

<b>Why</b>	To maintain effectiveness of the Prince Castle MCD DCFT conveyor belt	
<b>Time required</b>	5 minutes to prepare	10 minutes including belts, 5 minutes without belts to complete
<b>Time of day</b>	After close	For 24-hour restaurants: during low-volume times
<b>Hazard icons</b>	 Chemicals  Electricity  Hot Surfaces  Equipment Alert	

## Tools and supplies



## Procedure

### 1 Turn the toaster OFF.

After waiting 15 minutes for unit to cool, put on the heat resistant gloves.



**NOTE:** Failure to wear heat-resistant gloves while performing this cleaning procedure can result in burns.



### 2 Remove the main release sheet from the toaster.

- Remove release sheet clip, and release sheet.
- Place on a clean, flat and dry surface.
- Inspect the release sheet for tears, cracks and sticking.
- Replace when necessary.



**NOTE:** DO NOT fold or crease release sheet or take to the 3-compartment sink to be cleaned.

## 2 (continued)

- Spray a clean, sanitizer-soaked towel with Solidsense APSC or McDonald's DR Concentrated Disinfectant Cleaner solution and use to wipe release sheet clean.
- Clean the entire surface of the release sheet.
- Immediately rinse the sheet with a clean, sanitizer-soaked towel.
- Flip the release sheet over and repeat cleaning instructions.
- Rinse this side of sheet.



Chemicals

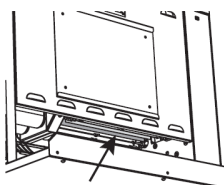
**Sanitizer solution, Solidsense APSC or McDonald's DR Concentrated Disinfectant Cleaner**

- Install release sheet, making sure that sheet is centered over platen and the crease in sheet is centered.
- Insert the release sheet over the center bar of the in-feed cover with one end of the sheet in the Crown slot and one end in the Heel slot.
- Position the crease on the release sheet on top of the in-feed chute center bar, making sure that the sheet corners are not curled exposing the platen.
- Check to see that 12.7 mm (1/2") of release sheet extends below each side of the platen.
- Install the Release sheet clip.

**NOTE:** If 12.7 mm (1/2") of the release sheet does not extend below the bottom of the platen, then the sheet is not properly positioned.

**NOTE:** Make sure release sheet is completely dry before installing.

**NOTE:** When installing release sheet, you may flip inside-out and use the other side if needed.



## 3 Clean conveyor and club belts.

- With power off, remove gloves from hands to unscrew and lift lid and open front conveyor door.
- Put heat-resistant gloves back on to clean.
- Using the sanitizer-soaked towel, clean the front main conveyor and club belts.
- Close front door, power unit ON, count 13 seconds to reveal unclean side of belt, power unit OFF, open door and repeat cleaning using the sanitizer-soaked towel.
- Close door, power unit ON, count 13 seconds again, power unit OFF, open door and repeat cleaning.
- Wipe down the inner panel of the conveyor access door with a clean, sanitizer-soaked towel sprayed with Solidsense APSC or McDonald's DR Concentrated Disinfectant Cleaner.
- Repeat the belt cleaning process for rear main conveyor belt, rear club belt and rear inner panel.



Chemicals

**Sanitizer solution, Detergent solution or McDonald's DR Concentrated Disinfectant Cleaner**

- Close the conveyor access door and secure.
- Install the Infeed Cover
- Re-tighten top cover screws.





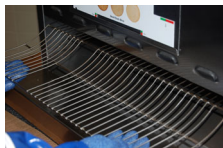
### 4 Remove wire bun chute and clean.

- Lift chute at an angle, lifting rear of chute and then pulling chute forward out of toaster.
- Spray a clean, sanitizer-soaked towel with Solidsense APSC or McDonald's DR Concentrated Disinfectant Cleaner.
- Use the towel to clean the wire bun chute.
- Use the towel to clean all exterior areas of the toaster.



Chemicals

**Sanitizer solution, Detergent solution or McDonald's DR Concentrated Disinfectant Cleaner**



### 5 Clean landing zone and reinstall wire bun chute.

- Spray a clean, sanitizer-soaked towel with Solidsense APSC or McDonald's DR Concentrated Disinfectant Cleaner.
- Use the towel to clean the Pick-Up Zone.
- Spray all areas of the Pick-Up Zone with SolidSense Sanitizer and allow to air dry.



Chemicals

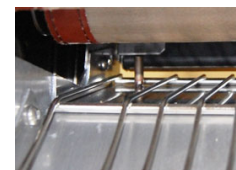
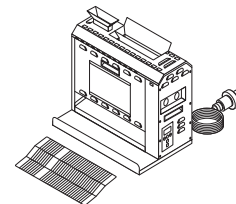
**Sanitizer solution, Detergent solution or McDonald's DR Concentrated Disinfectant Cleaner**

- Install wire bun chute by sliding the wire bun chute over the landing zone and into the toaster.
- Position the chute so that the rear of the chute is secured by 2 posts at the rear of the toaster.

NOTE: Front edge of the wire bun chute should be positioned at the edge of the toaster landing zone.

Proper installation of wire bun chute is shown above right.

Improper installation of wire bun chute is shown below right.



### 6 Clean exterior of the toaster.

- Clean exterior of toaster unit and all parts with a clean, sanitizer-soaked towel sprayed with Solidsense APSC or McDonald's DR Concentrated Disinfectant Cleaner.
- Rinse exterior of unit using a clean, sanitizer-soaked towel.

NOTE: If streaking occurs, spray a paper towel with KAY Specialty Cleaner & Polish and wipe down to polish the exterior of the equipment.

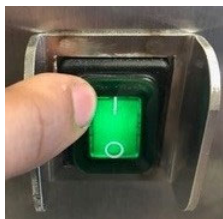


Chemicals

**Sanitizer solution, Solidsense APSC or McDonald's DR Concentrated Disinfectant Cleaner**

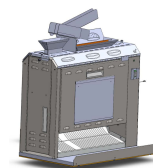
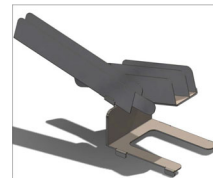
### 7 Turn the toaster ON.





Allow the toaster to warm up. The toaster is now ready to resume use.



### 8 Assemble (optional) bun infeed accessory.

- Position bun infeed accessory as shown, in between club chute and main chute.
- Slide the bun infeed accessory's four tabs into 1st and 4th slots of bun chute topper.
- Once tabs are inserted, secure bun infeed accessory so that it lays flat onto bun chute topper by pushing down on base.



<b>Why</b>	To maintain effectiveness of the Prince Castle MCD DCFT conveyor belt	
<b>Time required</b>	5 minutes to prepare	15 minutes to complete
<b>Time of day</b>	After close	For 24-hour restaurants: during low-volume times
<b>Hazard icons</b>	 Chemicals  Electricity  Hot Surfaces  Equipment Alert	

### Tools and supplies



### Procedure

**1 Turn the toaster OFF and Unplug Toaster.**

After waiting 15 minutes for unit to cool, put on the heat resistant gloves.



**NOTE:** Failure to wear heat-resistant gloves while performing this cleaning procedure can result in burns.

**2 Remove and clean release sheet following Daily PM procedure.**



**3 Remove the in-feed cover by unscrewing top screws by hand and take the in-feed cover to the 3-compartment sink.**



**4 Wash, rinse and sanitize the cover at the 3-compartment sink.**

Wash and sanitize with Solidsense APSC or McDonald's DR Concentrated Disinfectant Cleaner followed by sanitizer solution. Allow to air dry.



**Sanitizer solution, Solidsense APSC or McDonald's DR Concentrated Disinfectant Cleaner**



**5 Reinstall the in-feed cover.**

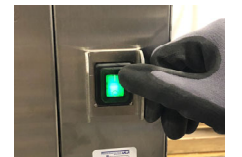






**6 Re-install release sheet following Daily PM procedure.**



**7 Turn the Toaster ON**

The toaster is now ready to resume use once it reaches operating temperature.



<b>Why</b>	To maintain effectiveness of the Prince Castle MCD DCFT conveyor belt	
<b>Time required</b>	5 minutes to prepare	15 minutes to complete
<b>Time of day</b>	After close	For 24-hour restaurants: during low-volume times
<b>Hazard icons</b>	 Chemicals  Electricity  Hot Surfaces  Equipment Alert	

## Tools and supplies



Bucket, clean and sanitized towels



Bucket, soiled towels



Heat Resistant Gloves



McDonald's DR Concentrated Disinfectant Cleaner

OR



Solidsense APSC

OR



KAY® QSR Hi-Temp Grill Cleaner



McDonald's GR Grill Cleaner

OR



Kay QSR



Approved Sanitizer Solution



Approved Degreaser Solution

**If Using KAY® QSR Hi-Temp Grill Cleaner**  
OR  
**Diversey McD High Temperature Grill Cleaner GR**  
Follow the below Procedure



## Procedure

- Turn the toaster OFF.**  
After waiting 15 minutes for unit to cool, put on the heat resistant gloves.



**NOTE:** Failure to wear heat-resistant gloves while performing this cleaning procedure can result in burns.



- Remove the main release sheet from the toaster.**

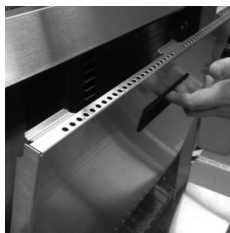
- Place release sheet on a clean, flat and dry surface.
- Inspect the release sheet for tears, cracks and sticking.
- Replace when necessary.



**NOTE:** DO NOT fold or crease release sheet or take to the 3-compartment sink to be cleaned.

### 3 Open Conveyor Door.

Unscrew and lift lid. Open front conveyor door.



### 4 Prepare grill cleaner.

- Pour one packet of Hi-Temp Grill Cleaner or McDonald's GR Grill Cleaner into an entrée base/lid or stainless steel pan.
- Be sure to discard entrée base/lid after use.



Chemicals

**Hi-Temp Grill Cleaner Or  
McDonald's GR Grill Cleaner**



### 5 Clean conveyor and club belts.

- With power off, open front conveyor door.
- Fully wring out a clean, sanitizer-soaked towel.
- Quickly dip the towel in Hi-Temp Grill Cleaner or McDonald's GR Grill Cleaner and use to clean the front main conveyor and front club belts.
- Rinse the belts with another clean, sanitizer-soaked towel.



### 5 (continued)

- Close door, power unit ON, count 13 seconds to reveal unclean side of belts, power unit OFF, open door and repeat cleaning using the sanitizer-soaked towel.
- Close door, power unit ON, count 13 seconds again, power OFF, open door and repeat cleaning.
- Wipe down the inner panel of the conveyor access door with a clean, sanitizer-soaked towel sprayed with approved Solidsense APSC or McDonald's DR Concentrated Disinfectant Cleaner.
- Repeat the belt cleaning process for rear belts.



Chemicals

**Hi-Temp Grill Cleaner or  
McDonald's GR Grill Cleaner,  
Sanitizer solution, Solidsense  
APSC or McDonald's DR  
Concentrated Disinfectant  
Cleaner**



Equipment Alert

**NOTE: Do not clean ANY belts while they are turning.**

- Close the conveyor access door and secure.
- Re-tighten top cover screws.

**6 Reinstall Release Sheet.**

NOTE: Make sure release sheet is completely dry before installing.



NOTE: When installing release sheet, you may flip inside-out and use the other side if needed.

**7 Turn the toaster ON.**

Allow the toaster to warm up. The toaster is now ready to resume use.







**If Using Kay QSR Heat Activated Grill & Toaster Cleaner (HAGTC), follow the below procedure**

## 1 Turn the toaster On.

Once the unit is at operating temperature, put on heat resistant gloves.



**NOTE:** Failure to wear heat-resistant gloves while performing this cleaning procedure can result in burns.

## 2 Remove the main release sheet from the toaster.

- Place release sheet on a clean, flat and dry surface.
- Inspect the release sheet for tears, cracks and sticking.
- Replace when necessary.



**NOTE:** DO NOT fold or crease release sheet or take to the 3-compartment sink to be cleaned.



## 3 Apply Solution.

Put on Heat Resistant Gloves. Open the conveyor drawer. Ensure toaster is hot before applying Heat Activated Grill & Toaster Cleaner (HAGTC). Apply a small amount HAGTC to a clean, sanitizer-soaked grill cloth and then spread evenly across exposed section of belt to completely coat the belts. Repeat applying product until all areas of the belt are coated. Close conveyor door and let run for 5 seconds to advance the belt to new location before applying additional cleaner.



## 4 Spread solution onto belt.

Spread solution onto belt, going across/with the grain of the belt.

## 5 Close the conveyor door and allow conveyor to run for 6 minutes. (Stains will begin to darken). Any smoke is completely normal.



- 6 Wipe residue with a clean, sanitizer-soaked grill cloth, wiping straight across the belt until soils are removed. Open/close conveyor door for 5-second intervals until entire belt has been cleaned.



- 7 Rinse entire belt with a separate, clean sanitizer-soaked grill cloth thoroughly until all of the produce residue has been removed.







- 8 Close the conveyor door.
- 9 Repeat steps 3-8 for the other side of the belt. Reinstall the Release Sheet.



### 10 Clean Landing Zone

Wipe out crumbs from landing zone with a clean, sanitizer-soaked towel.



<b>Why</b>	To maintain effectiveness of the Prince Castle MCD DCFT conveyor belt	
<b>Time required</b>	5 minutes to prepare	5 minutes to complete
<b>Time of day</b>	After close	For 24-hour restaurants: during low-volume times
<b>Hazard icons</b>	 Chemicals  Electricity  Hot Surfaces  Equipment Alert	

### Tools and supplies



Heat Resistant  
Gloves

### Procedure

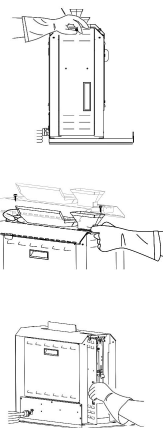
- 1 Turn the toaster OFF and Unplug Toaster.

After waiting 15 minutes for unit to cool, put on the heat resistant gloves.



**NOTE:** Failure to wear heat-resistant gloves while performing this cleaning procedure can result in burns.

- 2 Loosen thumbscrew on left-hand side cover and pull cover down to remove.



- 3 Pivot latch arm and secure in metal clip.



- 4 Remove belt tension by pivoting tension arms up.



- 5 Remove old belts.



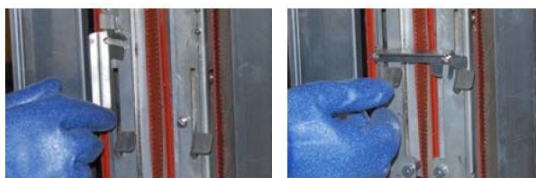
- 6 Install new belts.



- 7 Be sure that bead on belt rides in groove in belt rollers.

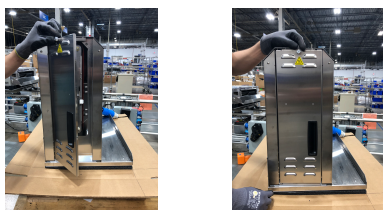


- 8 Pivot tension arms down and pivot and engage latch arm.



- 9 Engage hooks on rear of side cover into slots in toaster frame and slide side cover up.

Tighten thumbscrew to secure side cover.



- 10 Turn the toaster ON.  
Allow the toaster to warm up. The toaster is now ready to resume use.



## Fault Codes

DCFT-MCD ERROR CODE MATRIX				Error Message to Display	
Component Designation	Error Code	Problem Description	Action to Take	Dual Display Mode	
Main Platen	10	Probe shorted	Shut off power to the toaster, wait 30 seconds and turn back on. If the error code is still present or reappears within 24 hours, call for service.	Initial screen (1.5 sec.)	Toggle screen (1.5 sec.)
				<b>Main Probe Shorted</b>  <b>Call for service</b>	N/A
Main Platen	11	Probe Open	Shut off power to the toaster, wait 30 seconds and turn back on. If the error code is still present or reappears within 24 hours, call for service.	Initial screen (1.5 sec.)	Toggle screen (1.5 sec.)
				<b>Main Probe Open</b>  <b>Call for service</b>	N/A
Main Platen	12	Redundant heater switchover mode	Shut off power to the toaster, wait 30 seconds and turn back on. If the error code is still present or reappears within 24 hours, call for service.	Initial screen (1.5 sec.)	Toggle screen (1.5 sec.)
				<b>Heater switchover mode</b>  <b>Call for service</b>	N/A
Main Platen	13	Redundant heater switchover error	Shut off power to the toaster, wait 30 seconds and turn back on. If the error code is still present or reappears within 24 hours, call for service.	Initial screen (1.5 sec.)	Toggle screen (1.5 sec.)
				<b>Heater switchover error</b>  <b>Call for service</b>	N/A
Front Club Platen	20	Probe shorted	Shut off power to the toaster, wait 30 seconds and turn back on. If the error code is still present or reappears within 24 hours, call for service.	Initial screen (1.5 sec.)	Toggle screen (1.5 sec.)
				<b>Front Club Probe shorted</b>  <b>Call for service</b>	N/A
Front Club Platen	21	Probe open	Shut off power to the toaster, wait 30 seconds and turn back on. If the error code is still present or reappears within 24 hours, call for service.	Initial screen (1.5 sec.)	Toggle screen (1.5 sec.)
				<b>Front Club Probe open</b>  <b>Call for service</b>	N/A
Front Club Platen	22	Heater temperature drifted too low for too long. 25°F below setpoint for 5 minutes.	Shut off power to the toaster, wait 30 seconds and turn back on. If the error code is still present or reappears within 24 hours, call for service.	Initial screen (1.5 sec.)	Toggle screen (1.5 sec.)
				<b>Front Club Low temp error</b> <b>Power OFF</b> <b>Wait 30 seconds</b>	<b>Power ON if problem exist</b>  <b>Call for service</b>
Rear Club Platen	30	Probe shorted	Shut off power to the toaster, wait 30 seconds and turn back on. If the error code is still present or reappears within 24 hours, call for service.	Initial screen (1.5 sec.)	Toggle screen (1.5 sec.)
				<b>Rear Club Probe shorted</b>  <b>Call for service</b>	N/A
Rear Club Platen	31	Probe open	Shut off power to the toaster, wait 30 seconds and turn back on. If the error code is still present or reappears within 24 hours, call for service.	Initial screen (1.5 sec.)	Toggle screen (1.5 sec.)
				<b>Rear Club Probe open</b>  <b>Call for service</b>	N/A
Rear Club Platen	32	Heater temperature drifted too low for too long. 25°F below setpoint for 5 minutes.	Shut off power to the toaster, wait 30 seconds and turn back on. If the error code is still present or reappears within 24 hours, call for service.	Initial screen (1.5 sec.)	Toggle screen (1.5 sec.)
				<b>Rear Club Low temp error</b> <b>Power OFF</b> <b>Wait 30 seconds</b>	<b>Power ON if problem exist</b>  <b>Call for service</b>
Motor	40	Motor tach error	Shut off power to the toaster, wait 30 seconds and turn back on. If the error code is still present or reappears within 24 hours, call for service.	Initial screen (1.5 sec.)	Toggle screen (1.5 sec.)
				<b>Motor speed error</b> <b>Power OFF</b>  <b>Wait 30 seconds</b>	<b>Power ON if problem exist</b>  <b>Call for service</b>
Motor	41	Motor load error	Shut off power to the toaster, wait 30 seconds and turn back on. If the error code is still present or reappears within 24 hours, call for service.	Initial screen (1.5 sec.)	Toggle screen (1.5 sec.)
				<b>Motor load error</b> <b>Power OFF</b>  <b>Wait 30 seconds</b>	<b>Power ON if problem exist</b>  <b>Call for service</b>

<b>Allowable Labor Limits</b>		
<u>Procedure</u>	<u>Part Number</u>	<u>Max Labor Hours</u>
Remove/Replace Membrane Switch and Display Assembly	526-370S	(.5) Hour
Remove/Replace Club Gear Transfer Belt	527-814S	(.5) Hour
Remove/Replace PCB	527-768S	(.5) Hour
Remove/Replace Right Side Main Probe	527-468S	(.5) Hour
Remove/Replace Heel Compression Adjust Assembly	527-681S	(1) Hour
Remove/Replace Motor and Drive Train Assembly	527-449S	(1) Hour
Remove/Replace Club Assembly	527-313S	(1) Hour
Remove/Replace Conveyor Belt	527-901S	(1) Hour
Remove/Replace Front Club Probe	527-636S	(1) Hour
Remove/Replace Crown Compression Adjust Assembly	527-682S	(1.5) Hours
Remove/Replace High Limit Switch	527-721S	(1.5) Hours
Remove/Replace Rear Club Probe	527-467S	(1.5) Hours