



Marmon Foodservice  
Technologies

A Berkshire Hathaway Company

## CBT SILICONE BELT REPLACEMENT





Marmon Foodservice  
Technologies  
A Berkshire Hathaway Company

## CBT SILICONE BELT REPLACEMENT

### TOOLS NEEDED



Scissors



Phillips head  
screwdriver

# SAFETY WARNING

BEFORE STARTING ANY WORK,  
MAKE SURE THE UNIT IS POWERED  
OFF AND UNPLUGGED FROM  
POWER OUTLET. MAKE SURE UNIT  
IS NOT HOT TO THE TOUCH, IF HOT  
WAIT FOR IT TO COOL DOWN.

# CBT SILICONE BELT REPLACEMENT

## Step #1

Loosen left and right tension screws by turning counterclockwise. Make sure deflector bracket stays in place.



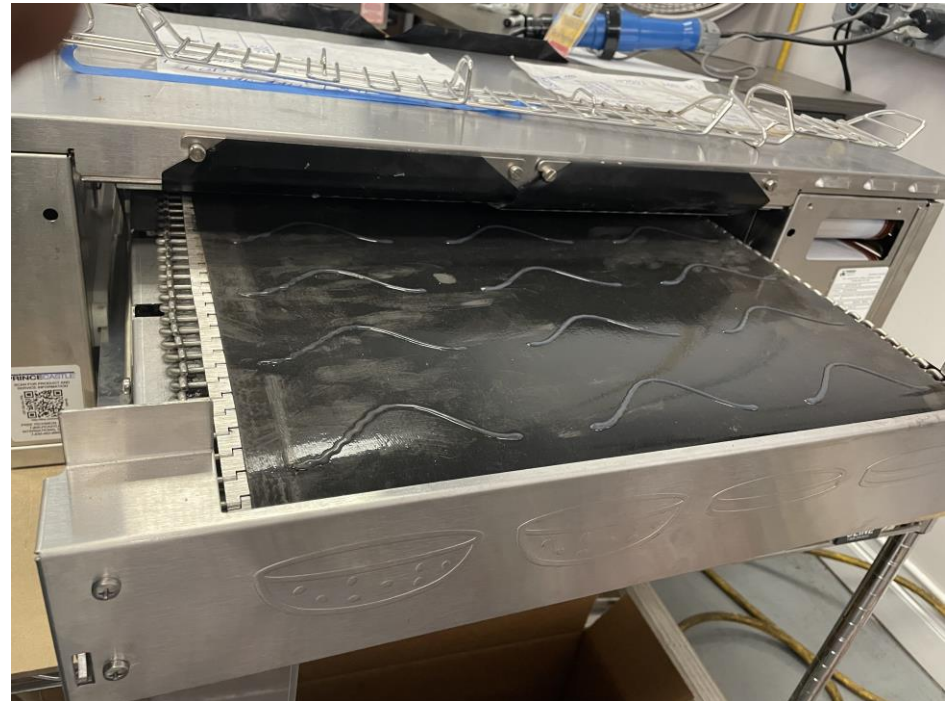
# CBT SILICONE BELT REPLACEMENT

## Step #2

Open conveyor by pressing  
locking bracket and pull



Locking bracket



# CBT SILICONE BELT REPLACEMENT

## Step #3

Using scissors, cut both ends of silicone belt just before the clips.





# CBT SILICONE BELT REPLACEMENT



View of belt after both  
ends have been cut

# CBT SILICONE BELT REPLACEMENT

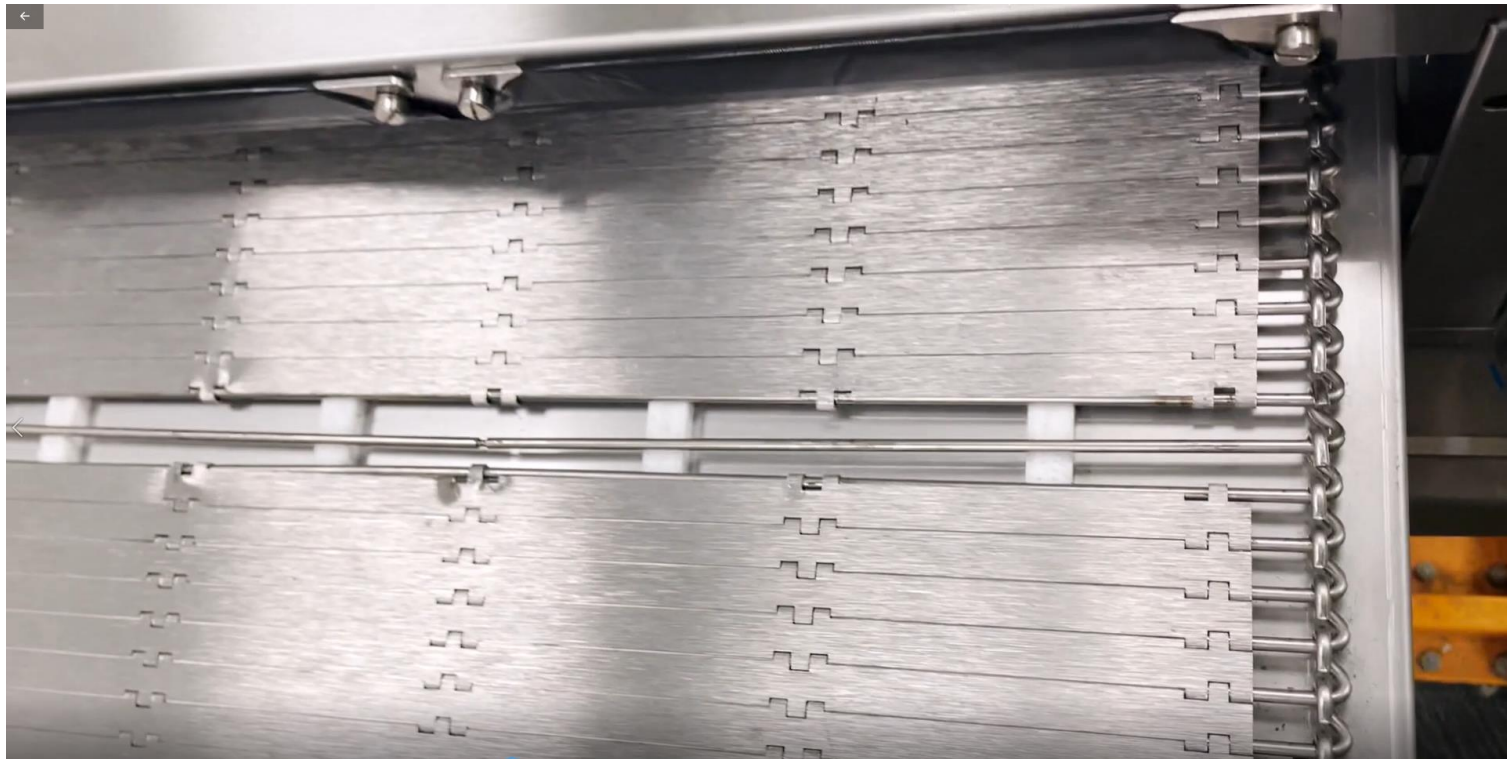
## Step #4

Unhook clips from  
master link





# CBT SILICONE BELT REPLACEMENT

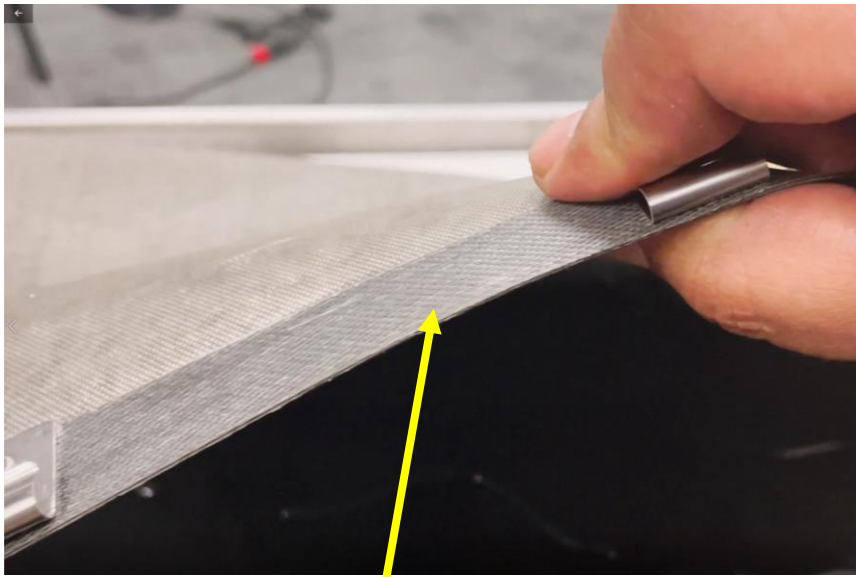


View of belt after silicone  
belt has been removed

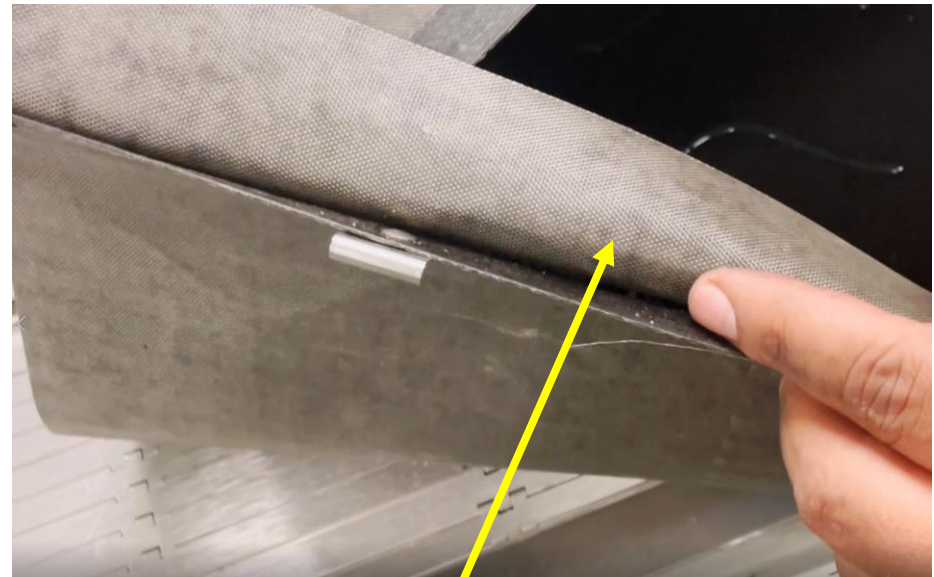
# CBT SILICONE BELT REPLACEMENT

## Step #5

Identify silicone belt ends



End with no flap

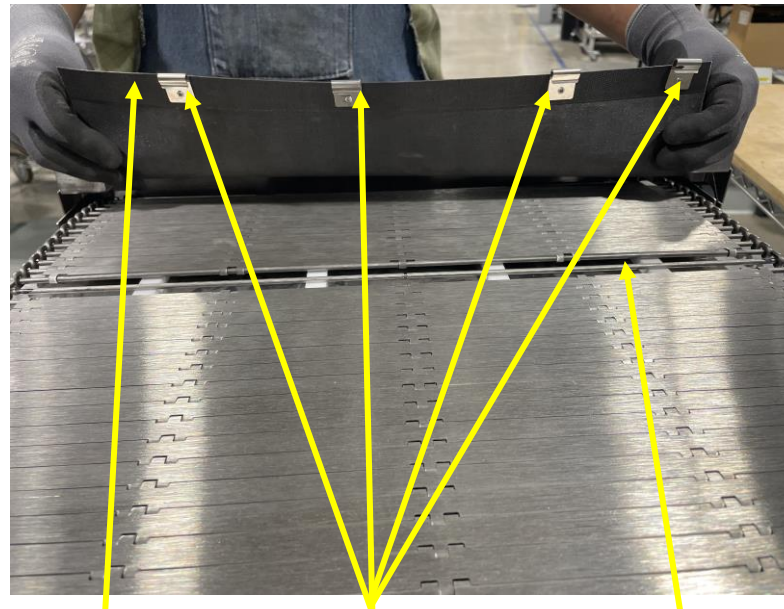


End with flap

# CBT SILICONE BELT REPLACEMENT

## Step #6

Place silicone belt clips without flap over master link.



Silicone belt end  
without flap

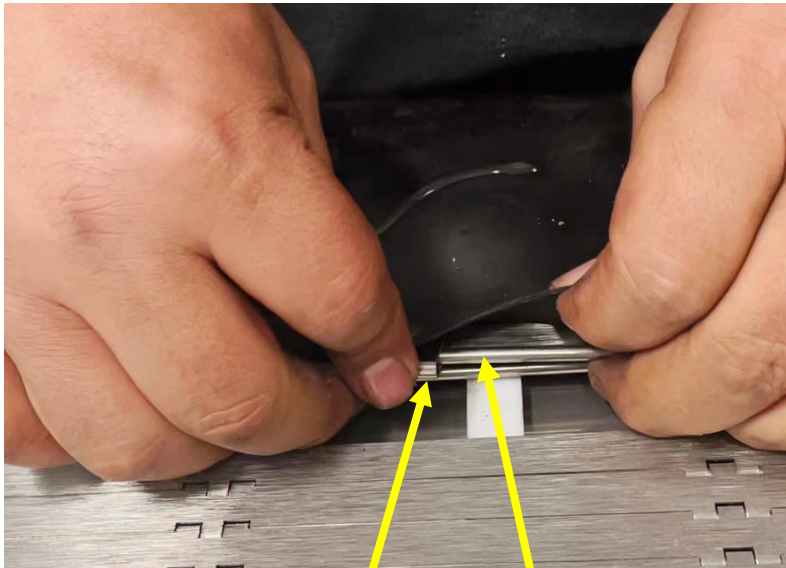
Clips

Master Link

# CBT SILICONE BELT REPLACEMENT

## Step #7

Snap Clips to master link. Repeat this step until all clips from end of silicone belt have been snapped to master link



Snap clip from one side of the belt to master link



Hold master link with middle fingers to prevent link from moving and use 2 index fingertips to push clips into place



# CBT SILICONE BELT REPLACEMENT

## Step #8

Once all clips from one end of silicone belt have been snapped in position, push belt forward using both hands until all the SS belt has been covered with the silicone belt.



Push belt forward  
using both hands



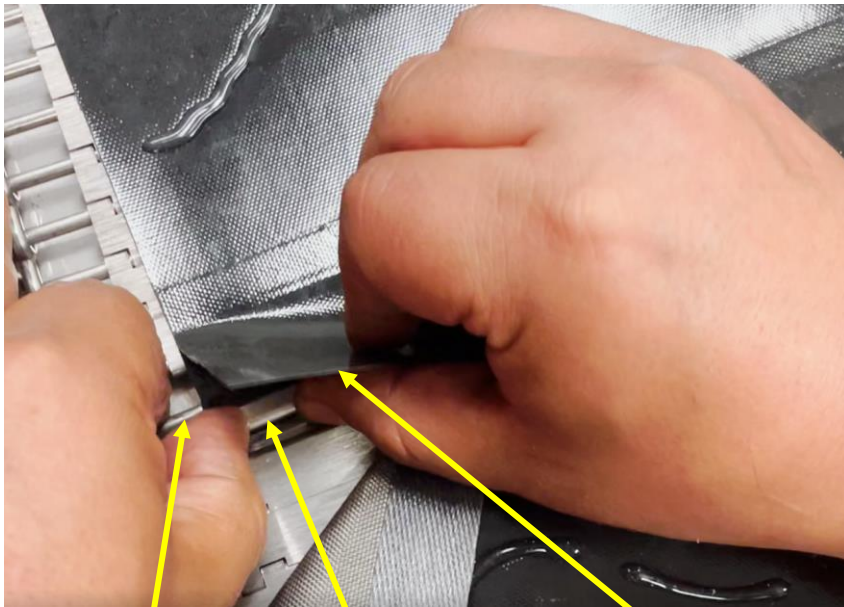
All SS belt covered  
with silicone belt



# CBT SILICONE BELT REPLACEMENT

## Step #9

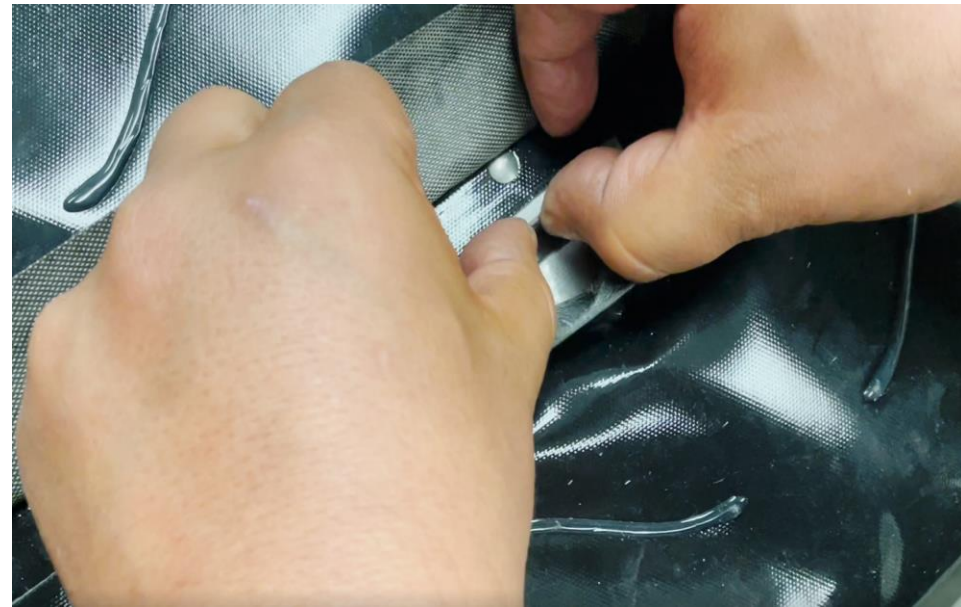
Locate silicone belt clips from other end of belt (with flap) and bring over master link to snap into place (in master link). Repeat this step until all clips from end of silicone belt have been snapped to master link



Master link

Clip

Silicone belt end with flap



Hold master link with middle fingers to prevent link from moving and use thumbs to push clips into place

# CBT SILICONE BELT REPLACEMENT

## Step #10

Center Silicone Belt after it has been Installed



# CBT SILICONE BELT REPLACEMENT

Step #11

Close conveyor



# CBT SILICONE BELT REPLACEMENT

## Step #12

Retighten left and right tension screws by turning clockwise. Make sure deflector bracket stays in place.

