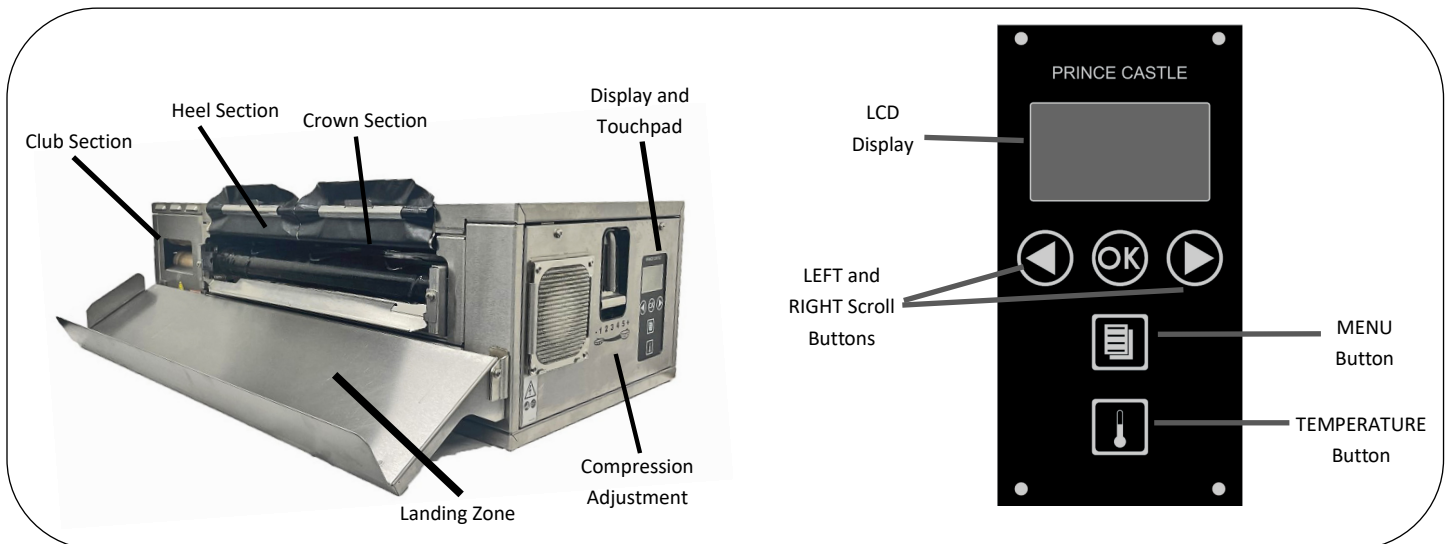


**Product Identification**



**LIMITED WARRANTY**

This product is warranted to be free from defects in material and/or workmanship for a period of three (3) years from date of original installation, not to exceed 30 months from date of shipment from our factory. Any part or component which proves to be faulty in material and/or workmanship within the warranty period will be replaced or repaired (at the option of Prince Castle, Inc.) without cost to the customer for parts or labor.

This warranty is subject to the following exceptions/conditions:

- Use of any non-genuine Prince Castle parts voids this warranty and all work must be performed by an authorized Prince Castle Service Agent.
- All labor shall be performed during regular work hours. Overtime premium will not be covered.
- Travel charges are limited to 200 kilometers (100 miles) round trip, 2 hours travel time, one trip per repair.
- Damage caused by carelessness, neglect, and/or abuse (e.g., using wrong current, dropping, tampering with or altering electrical components, or improper cleaning) is not covered.
- Equipment damaged in shipment, by fire, flood or an act of God is not covered.
- Damage to non-stick coated surfaces is not covered by this warranty.



355 East Kehoe Blvd. • Carol Stream, IL 60188 USA  
Telephone: 630-462-8800 • Toll Free: 1-800-PCASTLE  
Fax: 630-462-1460 • [www.princecastle.com](http://www.princecastle.com)

**Table of Contents**

Product Identification.....	Page 1	Remove/Replace PCB.....	Page 20
Warranty Statement.....	Page 1	Remove/Replace Relay.....	Page 22
Table of Contents.....	Page 2	Silicone Belt Removal Procedure.....	Page 24
Electrical Specifications.....	Page 3	Silicone Belt Install Procedure.....	Page 25
Safe Service Practices.....	Page 3	Remove/Replace Motor and Belt Assembly.....	Page 27
Serial Number Matrix.....	Page 3	Remove/Replace Display Assembly.....	Page 29
Tools Required.....	Page 4	Remove/Replace Club Belt.....	Page 30
Fault Identification.....	Page 5	Remove/Replace Club Probe.....	Page 31
Troubleshooting Steps.....	Page 6	Remove/Replace Club Assembly.....	Page 33
Wiring Diagram.....	Page 7	Remove/Replace Platen High Limit Switch.....	Page 35
Test Points.....	Page 8	Allowable Labor Limits.....	Page 38
Exploded View and Parts List.....	Page 9		
Display Menu Options.....	Page 15		
Management Programming.....	Page 17		

# Horizontal Core Bun Toaster


## CBT-S-SB-NA-1PS



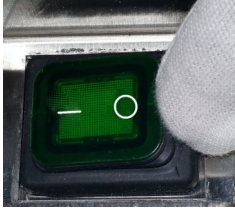
### Electrical Specifications

CBT-S-SB-NA-1PS 200-240VAC, 50/60 Hz, 1 Ph.

### Disconnect Power

 **WARNING**


Failure to turn off the unit before servicing could result in severe bodily injury or death. Switch the On/Off switch to the Off position




### Important

Prince Castle reserves the right to change specifications and product design without notice. Such revisions do not entitle the buyer to corresponding changes, improvements, additions, or replacements for previously purchased equipment.

### Safe Service Practices

 **WARNING**


Indicates information important to the proper operation of the unit. Failure to observe may result in damage to the equipment and/or severe bodily injury or death.

 **CAUTION**


Indicates information important to the operation of the unit. Failure to observe may result in damage to the equipment.

**GENERAL**

This appliance is designed for toasting bread products in a commercial McDonalds kitchen. The dimensions of the bread products as defined

 **CAUTION**

Do not hose down or use a water jet on the unit. Keep the unit away from running water. Disconnect power cord before performing any cleaning or maintenance.

 **CAUTION**

Equipment must be elevated from the floor at all times during cleaning and operation.

### Serial Number Matrix

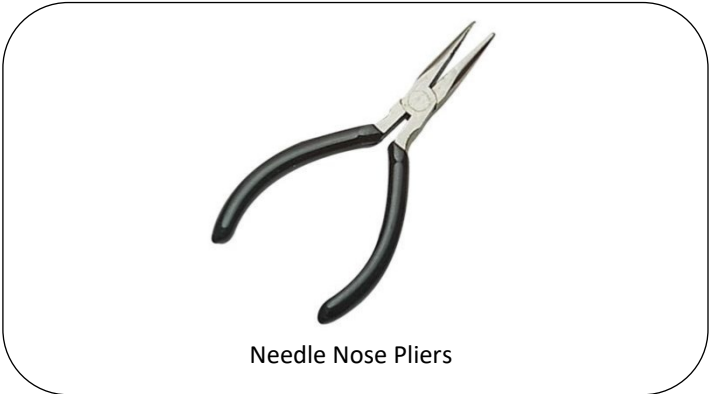
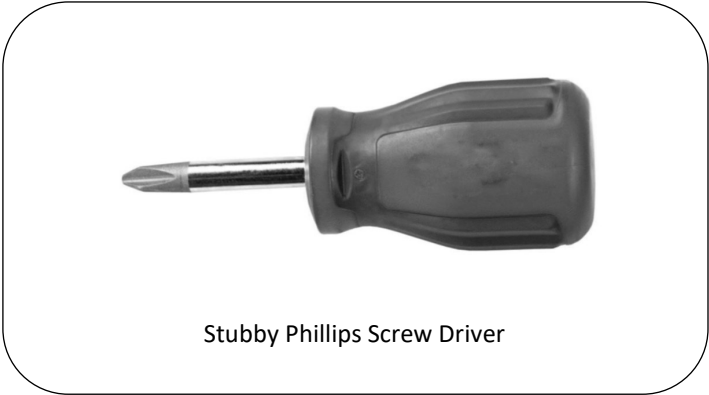
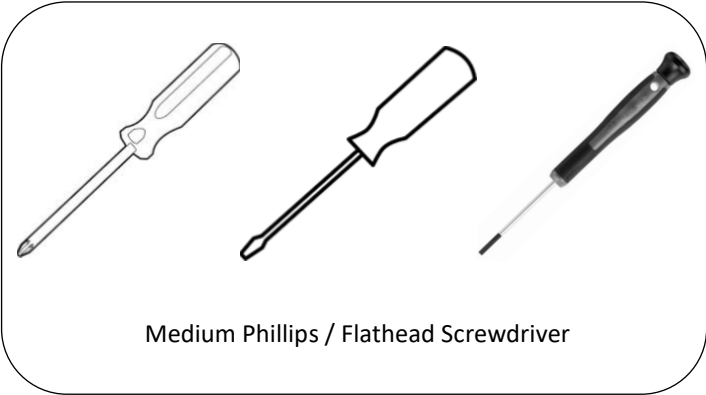
The manufacture date is encoded in the unit's serial number. The service bench installation date (used to determine warranty coverage) is considered to be the end of the following month. For example:

Serial Number: FJ0000458  
Manufacture Date: June 2014  
Service Bench Installation Date: July 31, 2014

**NOTE: Date of manufacture of unit included in the unit serial no. as follows:**

CS	A	2203	AVT	0001
Manufacturing Site	Revision Code	Date Code (Third week in 2022)	Product Group	Unit Number

**Tools Required**



### Fault Identification

CBT-MCD ERROR CODE MATRIX					
Error Message to Display		Component Designation	Error code	Problem Description	Action to take
Dual Display Mode					
Initial screen (1.5 sec.)	Toggle Screen (1.5 sec.)	Main Platen	10	Probe shorted	Shut off power to the toaster, wait 30 seconds and turn back on. If the error code is still present or reappears within 24 hours, call for service.
<b>Main Probe Shorted</b>	N/A				
<b>Call for service</b>					
Initial screen (1.5 sec.)	Toggle Screen (1.5 sec.)	Main Platen	11	Probe open	Shut off power to the toaster, wait 30 seconds and turn back on. If the error code is still present or reappears within 24 hours, call for service.
<b>Main Probe Open</b>	N/A				
<b>Call for service</b>					
Initial screen (1.5 sec.)	Toggle Screen (1.5 sec.)	Main Platen	12	Redundant heater switchover mode	Shut off power to the toaster, wait 30 seconds and turn back on. If the error code is still present or reappears within 24 hours, call for service.
<b>Heater switch-over mode</b>	N/A				
<b>Call for service</b>					
Initial screen (1.5 sec.)	Toggle Screen (1.5 sec.)	Main Platen	13	Redundant heater switchover error	Shut off power to the toaster, wait 30 seconds and turn back on. If the error code is still present or reappears within 24 hours, call for service.
<b>Heater switch-over error</b>	N/A				
<b>Call for service</b>					
Initial screen (1.5 sec.)	Toggle Screen (1.5 sec.)	Front Club Platen	20	Probe shorted	Shut off power to the toaster, wait 30 seconds and turn back on. If the error code is still present or reappears within 24 hours, call for service.
<b>Front Club Probe shorted</b>	N/A				
<b>Call for service</b>					
Initial screen (1.5 sec.)	Toggle Screen (1.5 sec.)	Front Club Platen	21	Probe open	Shut off power to the toaster, wait 30 seconds and turn back on. If the error code is still present or reappears within 24 hours, call for service.
<b>Front Club Probe open</b>	N/A				
<b>Call for service</b>					
Initial screen (1.5 sec.)	Toggle Screen (1.5 sec.)	Front Club Platen	22	Heater temperature drifted too low for too long. 25F below setpoint for 5 minutes.	Shut off power to the toaster, wait 30 seconds and turn back on. If the error code is still present or reappears within 24 hours, call for service.
<b>Front Club Low temp error</b>	<b>Power ON</b>				
<b>Power OFF</b>	<b>If problem exist</b>				
<b>Wait 30 seconds</b>	<b>Call for service</b>				
Initial screen (1.5 sec.)	Toggle Screen (1.5 sec.)	Rear Club Platen	30	Probe shorted	Shut off power to the toaster, wait 30 seconds and turn back on. If the error code is still present or reappears within 24 hours, call for service.
<b>Rear Club Probe shorted</b>	N/A				
<b>Call for service</b>					
Initial screen (1.5 sec.)	Toggle Screen (1.5 sec.)	Rear Club Platen	31	Probe open	Shut off power to the toaster, wait 30 seconds and turn back on. If the error code is still present or reappears within 24 hours, call for service.
<b>Rear Club Probe open</b>	N/A				
<b>Call for service</b>					
Initial screen (1.5 sec.)	Toggle Screen (1.5 sec.)	Rear Club Platen	32	Heater temperature drifted too low for too long. 25F below setpoint for 5 minutes.	Shut off power to the toaster, wait 30 seconds and turn back on. If the error code is still present or reappears within 24 hours, call for service.
<b>Rear Club Low temp error</b>	<b>Power ON</b>				
<b>Power OFF</b>	<b>If problem exist</b>				
<b>Wait 30 seconds</b>	<b>Call for service</b>				
Initial screen (1.5 sec.)	Toggle Screen (1.5 sec.)	Motor	40	Motor tach error	Shut off power to the toaster, wait 30 seconds and turn back on. If the error code is still present or reappears within 24 hours, call for service.
<b>Motor speed error</b>	<b>Power ON</b>				
<b>Power OFF</b>	<b>If problem exist</b>				
<b>Wait 30 seconds</b>	<b>Call for service</b>				
Initial screen (1.5 sec.)	Toggle Screen (1.5 sec.)	Motor	41	Motor load error	Shut off power to the toaster, wait 30 seconds and turn back on. If the error code is still present or reappears within 24 hours, call for service.
<b>Motor load error</b>	<b>Power ON</b>				
<b>Power OFF</b>	<b>If problem exist</b>				
<b>Wait 30 seconds</b>	<b>Call for service</b>				

### Troubleshooting Steps

**BURN/ELECTRICAL SHOCK HAZARD! Platen is HOT and can cause severe burns or severe shock.**  
**Keep hands and objects out of the toaster unit! Failure to exercise caution may result in serious injury!**  
**Turn the unit off, unplug it and let it cool down completely before touching or working on internal apparatus.**

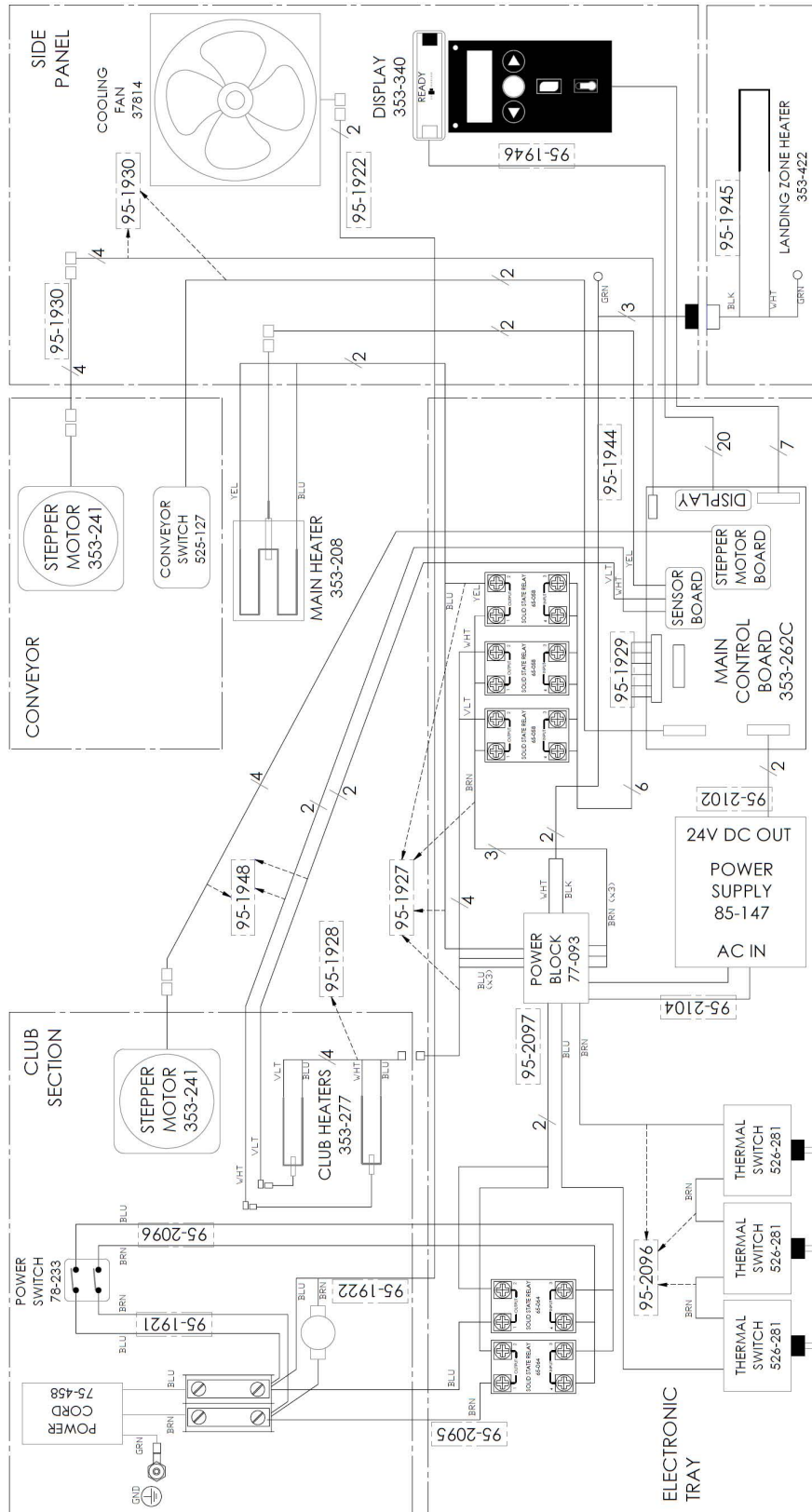
Master Display Messages		
PROBLEM	PROBABLE CAUSE	SOLUTION
Unit will not heat up	No power to unit.	Ensure power cord is connected to proper receptacle.
	Inoperable power cord	Call for Service (800) 722-7853
	Loose connection on power switch	Call for Service (800) 722-7853
	Inoperable power switch	Call for Service (800) 722-7853
	High limit switch tripped	Call for Service (800) 722-7853
	Inoperable Temperature Probe	Call for Service (800) 722-7853
	Inoperable Platen	Call for Service (800) 722-7853
Unit heats up, but the conveyor does not run	Loose motor switch connection.	Call for Service (800) 722-7853
	Inoperable motor.	Call for Service (800) 722-7853
	Inoperable motor switch.	Call for Service (800) 722-7853
	Stripped drive gear	Call for Service (800) 722-7853
Unit under-and over-heats, but does not respond to programming.	Check temperature settings	Adjust temperature set point setting. See management programming.
	Inoperable temperature probe	Call for Service (800) 722-7853
Buns under-or over-done.	Check platen adjustment. See operation manual	Move platen adjustment to the correct product part setting.
	Check conveyor temperature. From READY screen, press the INFORMATION button to display the actual	Adjust temperature set point setting. See management programming.
	Improper toast time.	Adjust toast time as needed.
Belt or buns stall under normal operating conditions.	Belt or release sheets are dirty.	Perform cleaning procedures.
	Belt has reached end of life	Call for Service (800) 722-7853
	Conveyor is in service position.	When unit is cold, push up on idler roller. Call for Service (800) 722-7853

# Horizontal Core Bun Toaster

## CBT-S-SB-NA-1PS



### Wiring Diagram



**CBT-S WIRING DIAGRAM**  
**375-1317 REV A**  
**10/15/2025**

**Test Points**

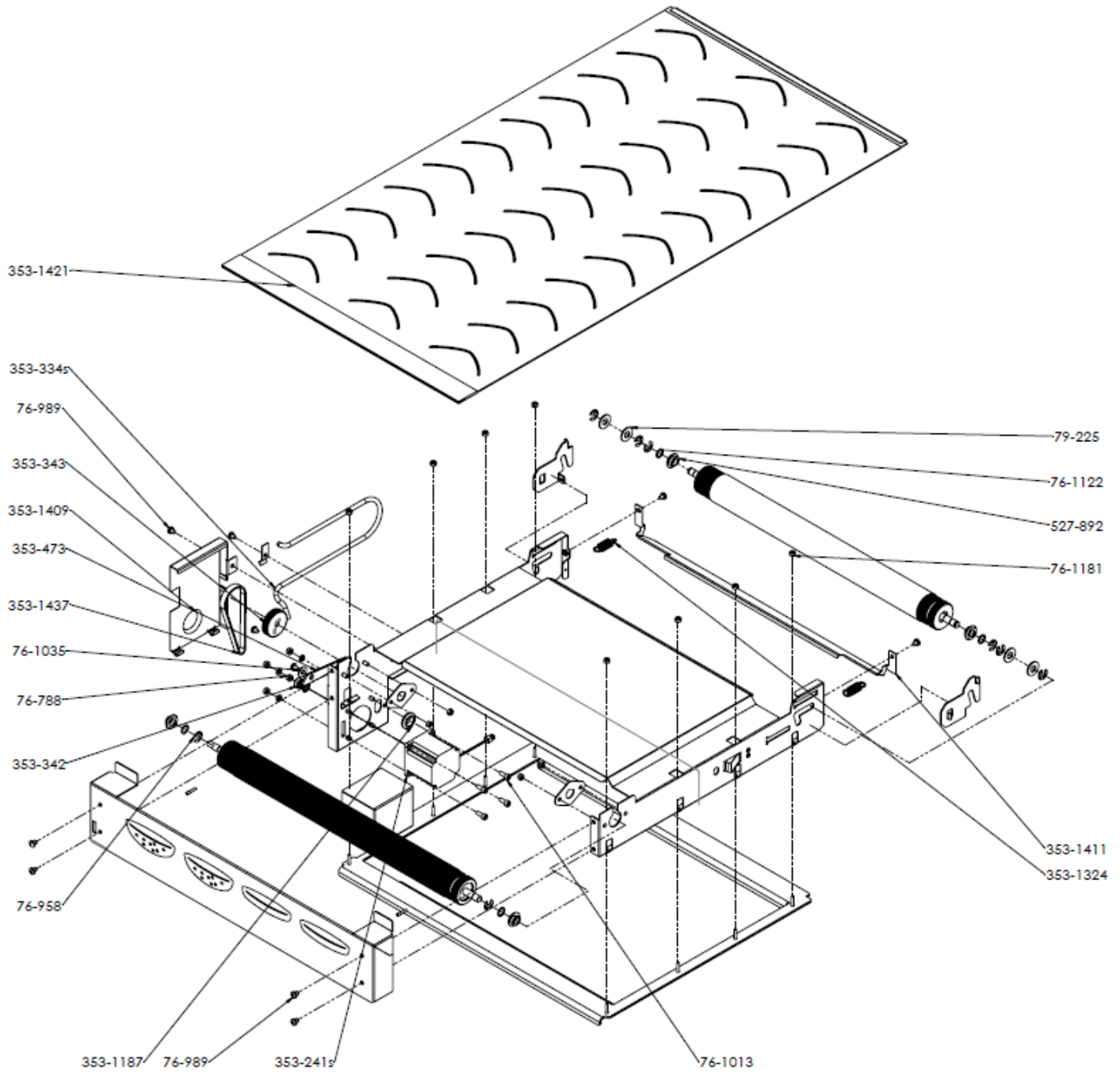
Test Points	Operating Ranges for CBT	
	Component	Operating Range
1	Main Platen	15-20Ω
2	Club Platen Top	37-42 Ω
3	Club Platen Bottom	37-42 Ω
4	Main Sensor Probe	1084 Ω @ Room temperature
5	Club sensor probe top	1084 Ω @ Room temperature
6	Club sensor probe bottom	1084 Ω @ Room temperature
7	Heater relays	4-32 VDC Input 24-280 VAC Output
8	AC fan	440-450 Ω

# Horizontal Core Bun Toaster

## CBT-S-SB-NA-1PS



### Exploded View and Parts List



# Horizontal Core Bun Toaster

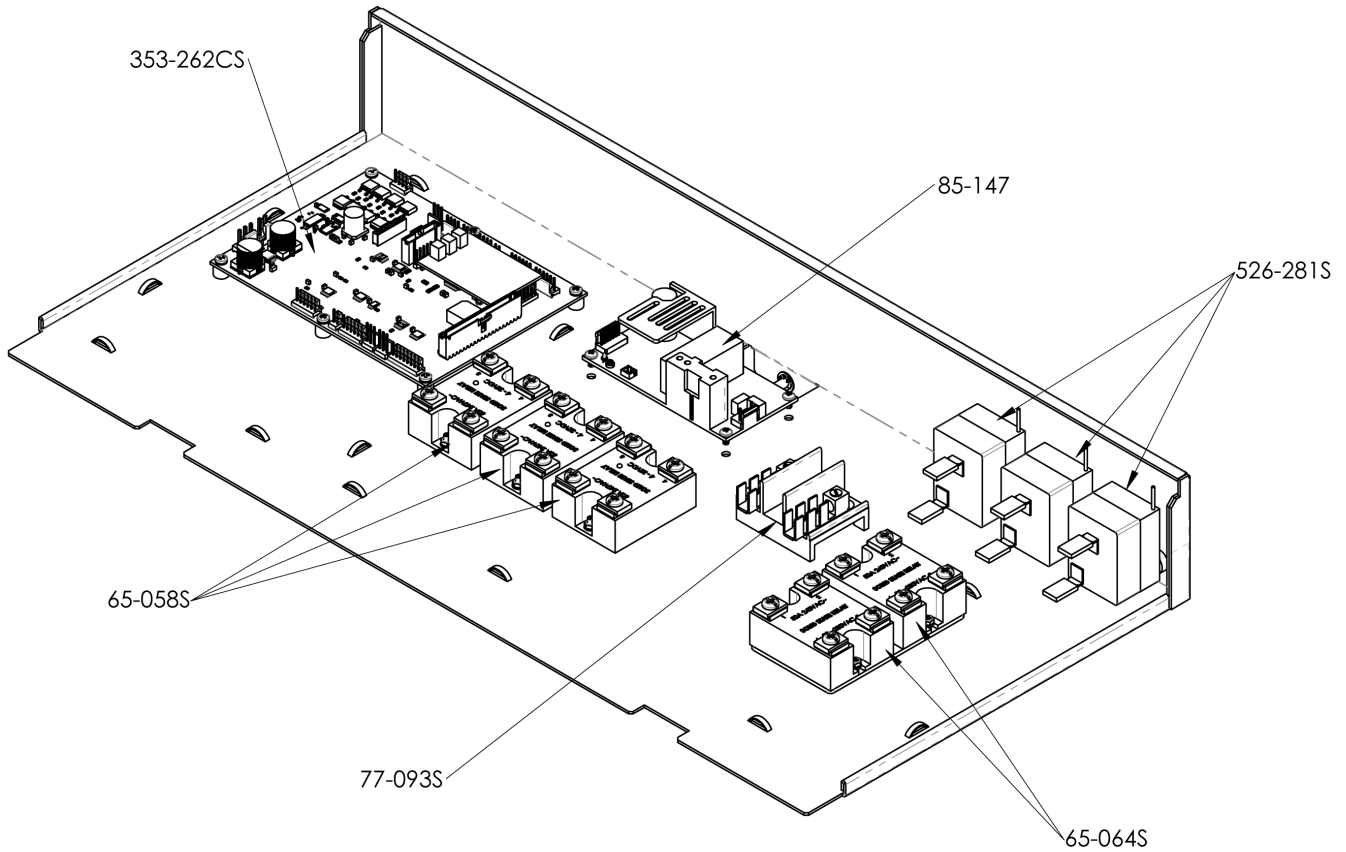
## CBT-S-SB-NA-1PS



### Exploded View and Parts List (Continued)

Part #	Description	Qty
76-958	CLIP	8
76-1122	SHIM, .375ID, .562OD, .02THK, SPRING STL	4
79-225	BRASS WASHER	4
353-1324	SPRING, CONVEYOR TENSIONER	2
527-892S	BEARING	4
353-1178	COVER, CONVEYOR MOTOR, CBT, ASSY	1
353-473	LATCH	1
353-343	PULLEY, 3MM PITCH (HTD), 44 GROOVE AL	1
353-1437	TIMING BELT, 282-3P-09, 94 TEETH (12-44T)	1
76-917	8-32 SET SCREW W/PIN	2
353-334S	SPRING, EXTENSION	1
76-1013	SCREW, M5 X 12, SS, SHCS	4
76-789	M5 FLAT WASHER, SS	4
76-1035	FLAT WASHER, .625X.281X.01-.06, SS	1
76-788	M5, HEX NUT WITH TOOTHED WASHER, SS	4
76-989	SCREW, M5 X 6LG, SS, PPH	9
76-1011	SCREW, PANHEAD, M5X8MM, SS	1
76-1181	M5 18-8 SS NYLON-INSERT LOCKNUT	12
76-1030S	SET SCREW, FLAT POINT, M5X6	2
353-1187	GROMMET, SBR RUBBER, PUSH IN, CBT	1
353-342	PULLEY, 3MM PITCH (HTD), 12 GROOVE, 9MM BELT, AL	1
353-241S	STEPPER MOTOR 1.8° STEP, LIN ENG PART 5718M-05SD-22RO	1
353-1411	DIVERTER, CONVEYOR	1
353-1421	SILICONE CONVEYOR BELT	1
353-1409	COVER, MOTOR	1

**Exploded View and Parts List (Continued)**



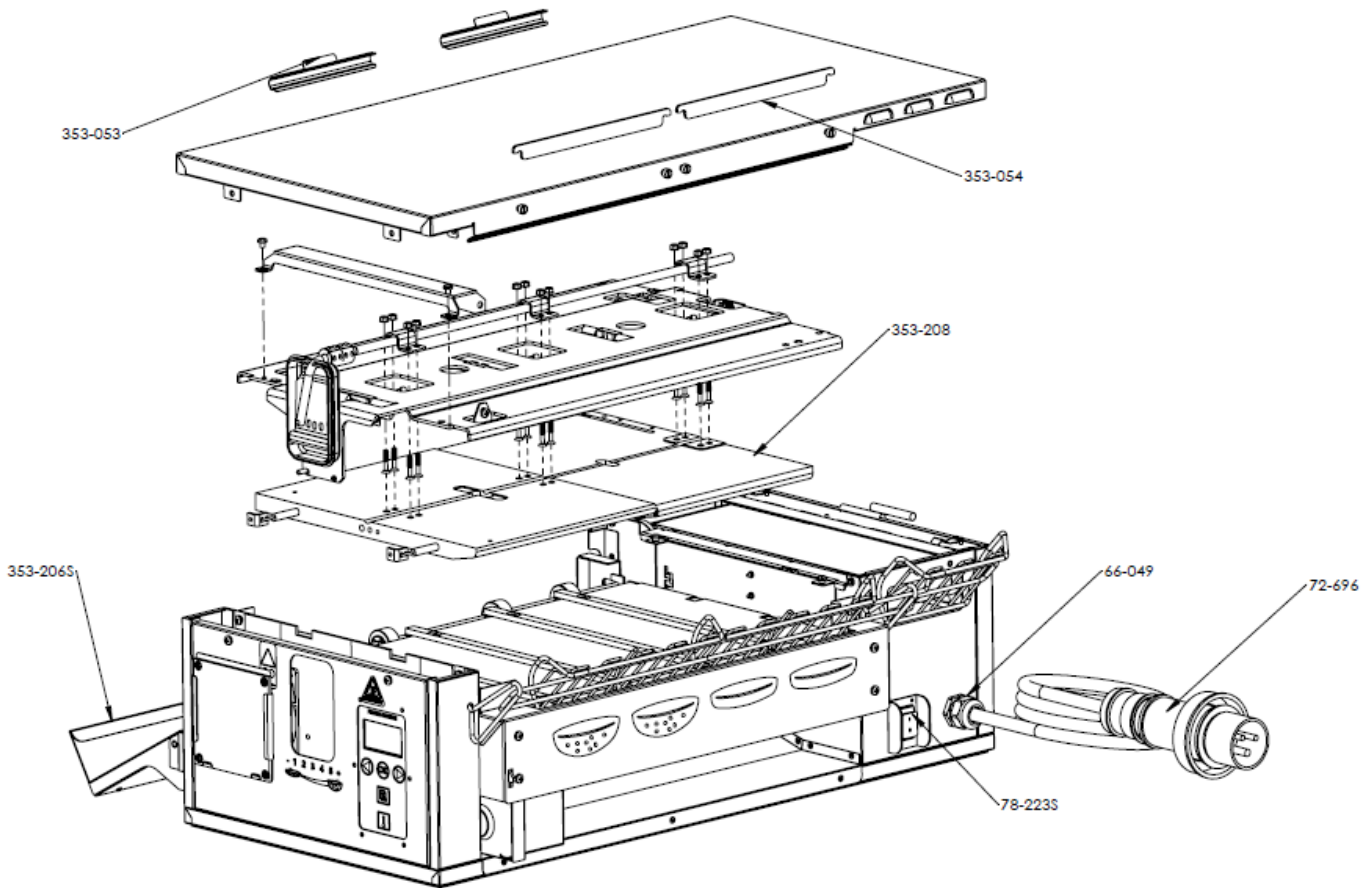
Part #	Description	Qty
77-093S	MCD KIT, TERMINAL BLOCK 12POS 2ROW INSULATED	1
526-281S	MCD KIT, TSTAT, HI-LIMIT BULB & CAP, 700F	3
65-064S	MCD KIT, RELAY,SS,50A,280VAC,90-280VAC	2
85-147	MCD KIT MEANWELL POWER SUPPLY, TOASTERS	1
353-262CS	MCD KIT, PCB, MAIN CONTROLLER	1
65-058S	MCD KIT, RELAY, SS,50A,280VAC,3-32VDC	3

# Horizontal Core Bun Toaster

## CBT-S-SB-NA-1PS

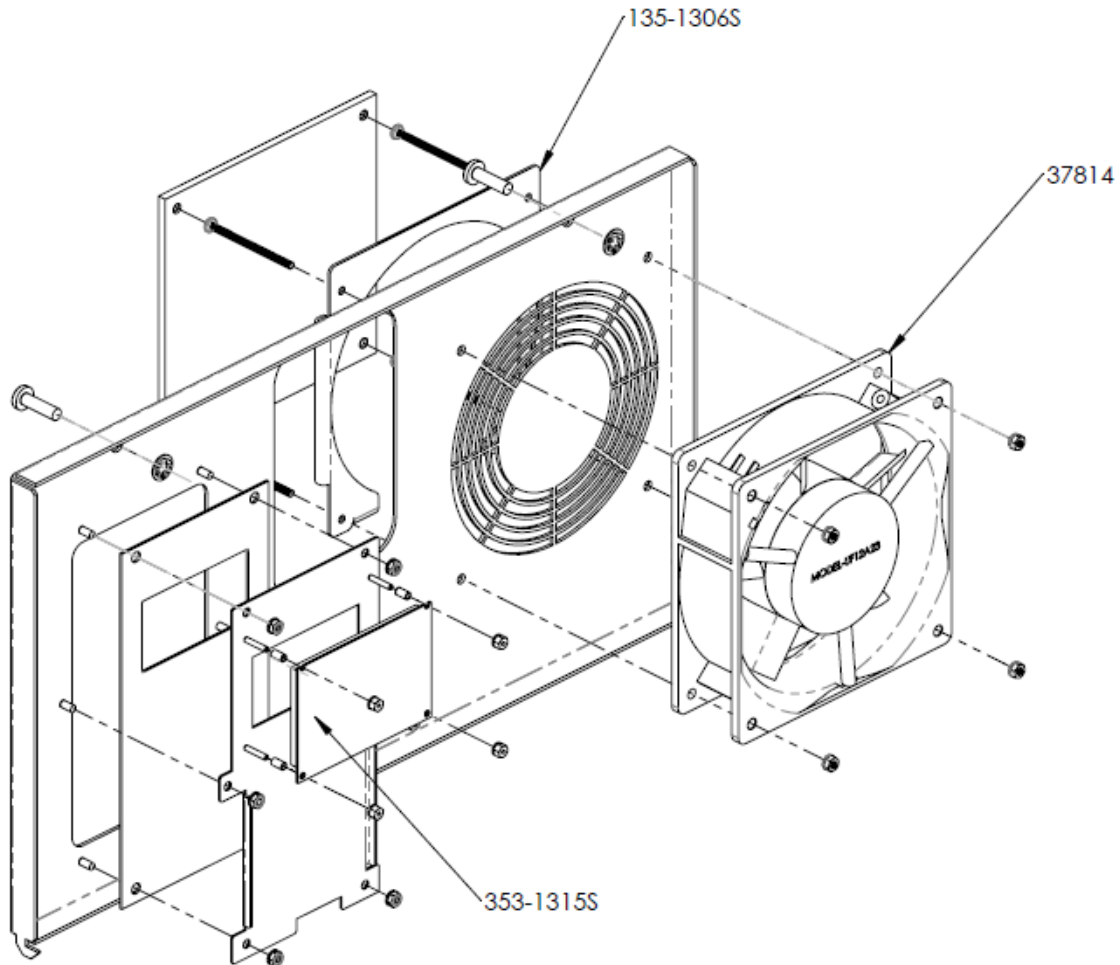


### Exploded View and Parts List (Continued)



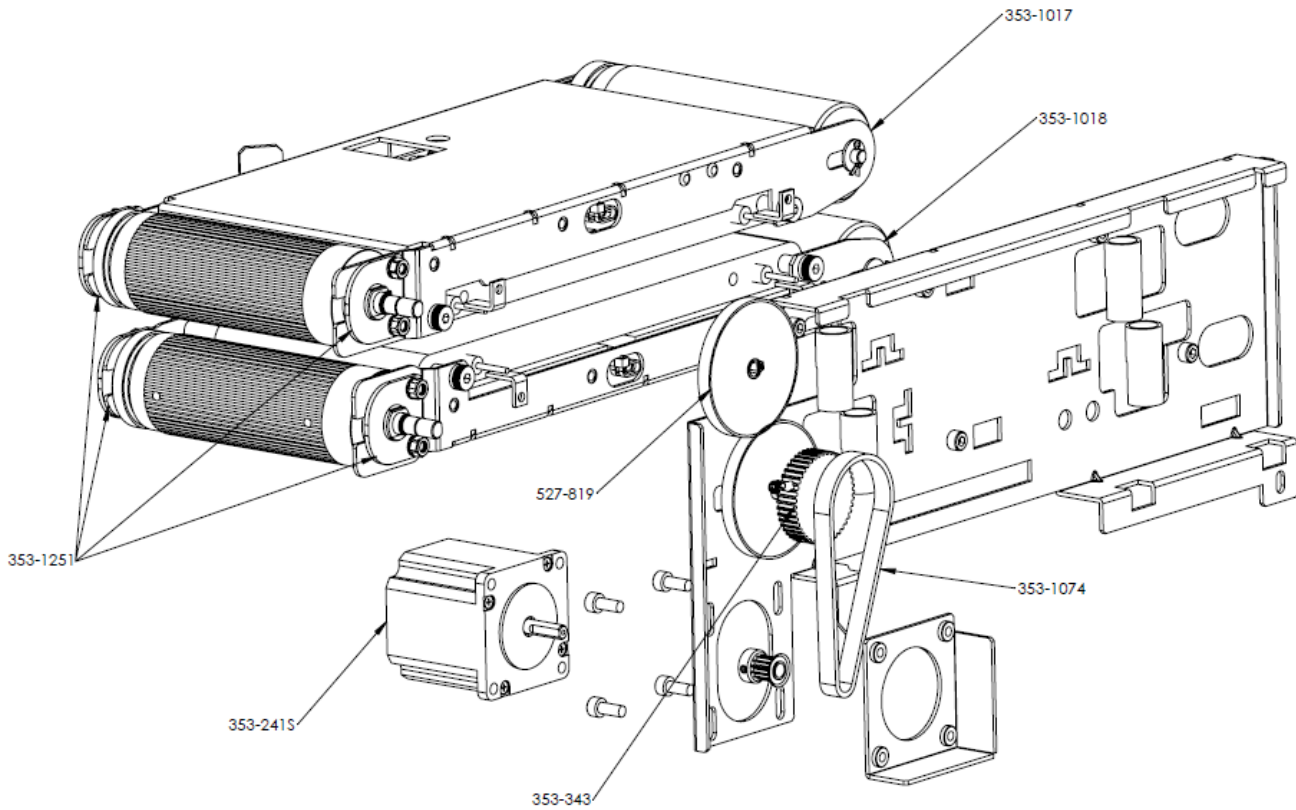
Part #	Description	Qty
353-053	CBT CLIP RELEASE SHEET	2
353-054	MCD KIT CBT BRACKT RELEASE SHEET MOUNT	2
353-208	MCD KIT CBT HEATER PLATEN 3.6kW/240V CONVEYOR	1
353-206S	MCD KIT CBT LANDING ZONE ASSY	1
66-049	MCD KIT STRAIN RELIEF	1
78-233	SWITCH ROCKER DPST IP65 16A	1
72-696	MCD KIT POWER CORD, 83IN, 3-COND, 12 GA 1PS	1

**Exploded View and Parts List (Continued)**



Part #	Description	Qty
37814	MCD KIT MOTOR FAN 230V CBT/IRT/SK	1
353-1315S	MCD KIT, LCD GRAPHIC 1DISPLAY W/NYLON NUTS, CBT/IRT	1
353-1306S	MCD KIT, IRT/CBT FAN FILTER	1

**Exploded View and Parts List (Continued)**



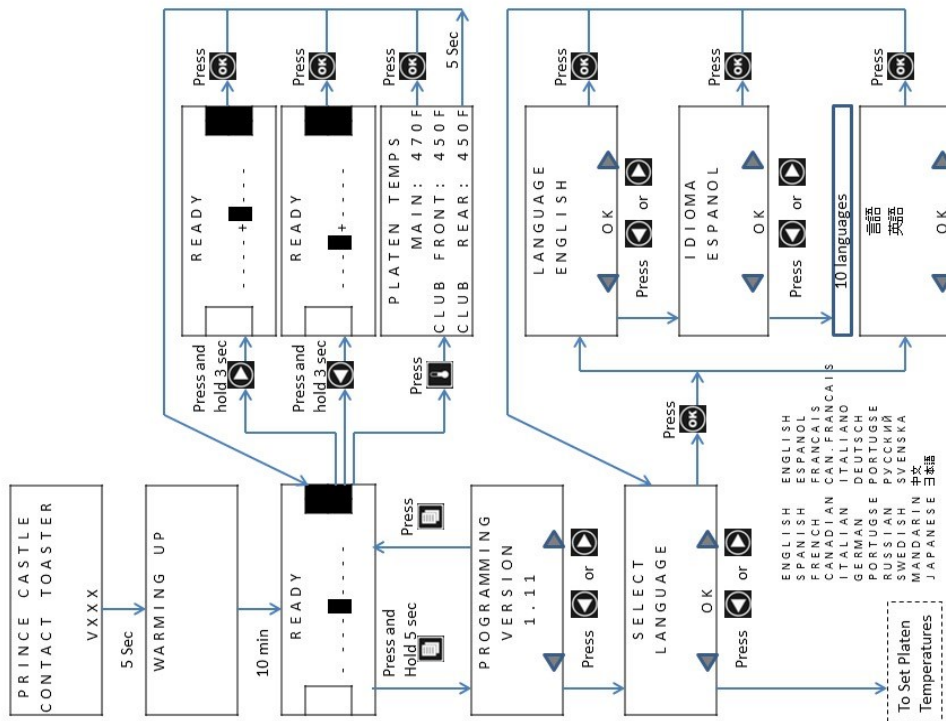
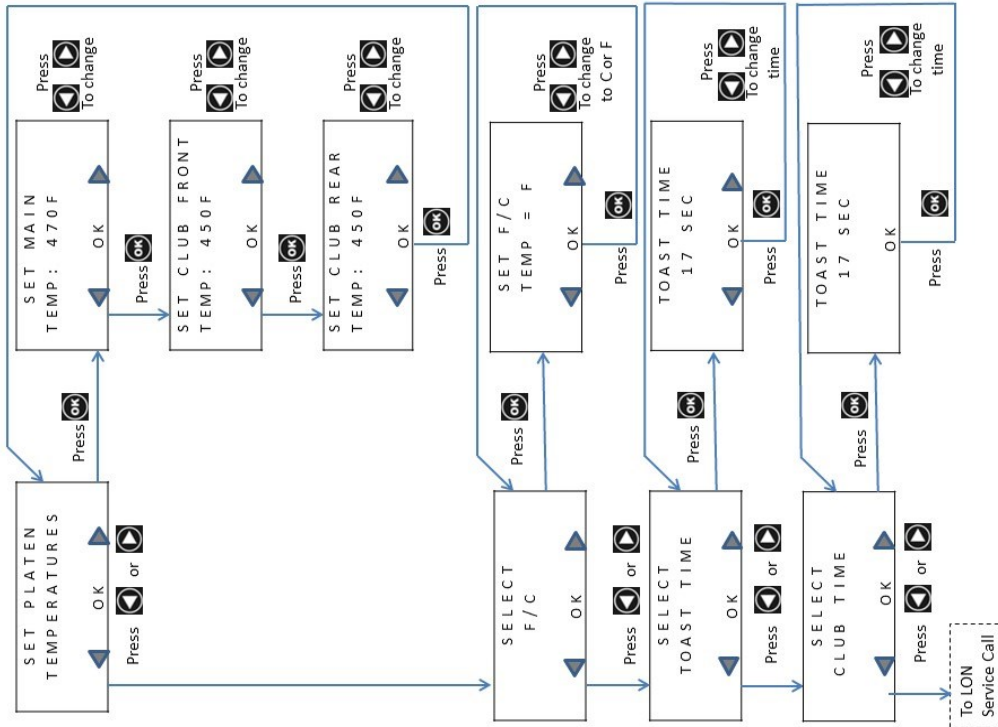
Part #	Description	Qty
353-241S	MCD KIT CBT CLUB MOTOR	1
353-343	MCD KIT, PULLEY, 3MM PITCH(HTD),.44 GROOVE, AL	2
353-1074	MCD KIT CBT BELT, 3MM HTD, 80 TEETH	1
527-819	MCD GEAR, SPURR, 56 TH, 24 DIAMETRAL PITCH,2.333P.D, .25WD	2
353-1018	MCD KIT CLUB ASSY, BOTTOM CBT	1
353-1017	MCD KIT TOP CLUB ASSY, CBT	1
353-1251	MCD Kit, BRACKET,BEARING,CLUB ASSEM, CBT	4

# Horizontal Core Bun Toaster

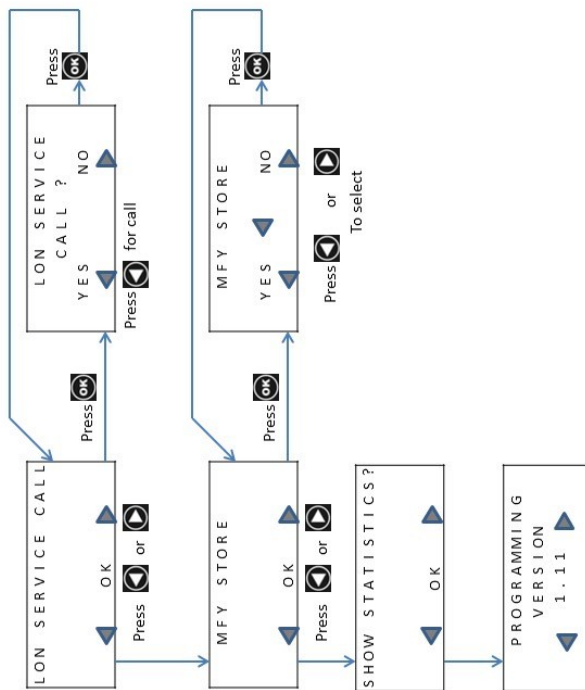
## CBT-S-SB-NA-1PS



### Display Menu Options



Display Menu Options (Continued...)



### Management Programming

**1**

To Enter Programming screens  
Press and hold the MENU button for 6 seconds. The PROGRAMMING VERSION screen will appear in the LCD display.

From the PROGRAMMING VERSION screen, you may:

Press RIGHT scroll button to advance to the next menu item



**3**

To Adjust PLATEN TEMPERATURE from the SELECT LANGUAGE Screen, press the RIGHT scroll button. Press the OK button to enter the programming screen.

- A. From the PLATEN TEMPERATURE screen that appears adjust the temperature using the RIGHT and LEFT scroll buttons.

Accept the new Temperature by pressing OK.

NOTE : To cancel without accepting the new setting, press the MENU logo button to return to the previous screen



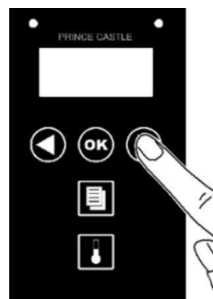
**2**

To Change the LANGUAGE from the PROGRAMMING VERSION

Screen, PRESS the left scroll button.

From the SELECT LANGUAGE Screen, Press OK button

- A. From the LANGUAGE screen that appears, use the RIGHT and LEFT scroll buttons. TO select different Language
- B. Accept the new language by pressing OK button to return to the SELECT LANGUAGE screen



**4**

To adjust SELECT F/C From The PLATEN TEMPERATURE screen, press the RIGHT scroll button.

From the SELECT F/C screen that appears, press the OK button.

- A. From the SET F/C Screen that appears, Use the LEFT and RIGHT scroll buttons to Select TEMP = F ( Fahrenheit ) or C (Celsius )
- B. Accept the new scale By pressing the OK Button to return to The SELECT F/C screen



### Management Programming (Continued)

**5**

To adjust set TOAST TIME from the SELECT F/C screen, press the RIGHT scroll button

From the SELECT TOAST TIME Screen, Press OK button

- A. From the SELECT TOAST TIME that appears, Adjust the set point Time Using the RIGHT and LEFT Scroll buttons. Accept The new toast time by Pressing OK.

NOTE : To cancel without accepting the new setting, press the MENU logo button to return to the previous screen



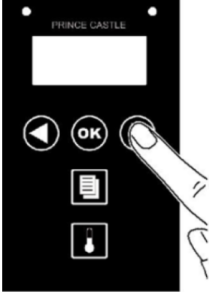
**7**

To enter LON SERVICE CALL from CLUB TOAST TIME screen, press the RIGHT scroll button.

From the LON SERVICE CALL Screen, Press OK button

From the LON SERVICE CALL screen that appears, the following options are available

- YES = LEFT scroll button
- NO = RIGHT scroll button
- OK = Cancel / Go Back



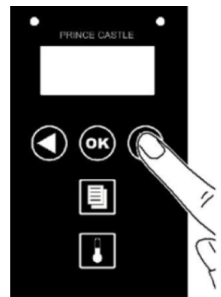
**6**

To adjust CLUB TOAST TIME from the SELECT TOAST TIME screen, press the RIGHT scroll button

From the SELECT CLUB TOAST TIME Screen, Press OK button

- A. From the SELECT CLUB TOAST TIME that appears, Adjust the set point Time Using the RIGHT and LEFT Scroll buttons. Accept The new toast time by Pressing OK.

NOTE : To cancel without accepting the new setting, press the MENU logo button to return to the previous screen



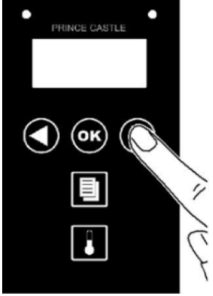
**8**

To enter MFY STORE from LON SERVICE CALL screen, press the RIGHT scroll button.

From the MFY STORE Screen, Press OK button

From the MFY STORE screen that appears, the following options are available

- YES = LEFT scroll button
- NO = RIGHT scroll button
- OK = Cancel / Go Back



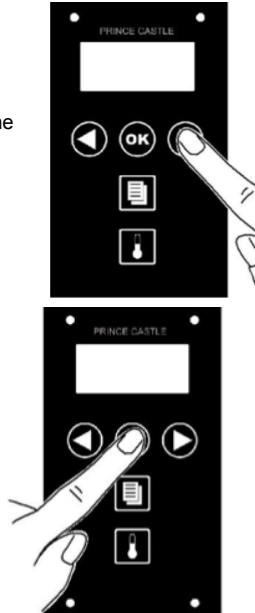
### Management Programming (Continued)

**9**

To view Service Codes, From the MFY Store screen, press the RIGHT scroll button once.

From the Service Codes screen,

- A. Select OK to check the service codes
- B. Refer to Service codes page to understand the operation of the unit.



**10**


Exit Programming

Press the MENU button from any screen to exit programming mode.

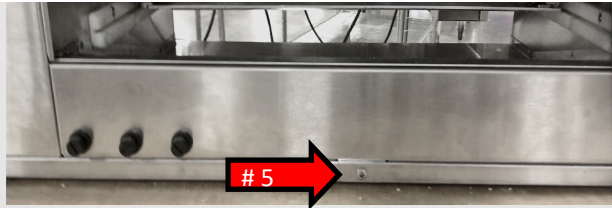
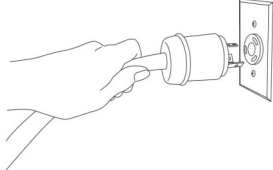


### Remove/Replace PCB

**1** Unplug the unit

 **WARNING**

Failure to disconnect power from the unit before servicing could result in severe bodily injury or death. The ON/OFF Switch does not disconnect incoming power to the unit.



**2** Remove the bun landing zone from the unit

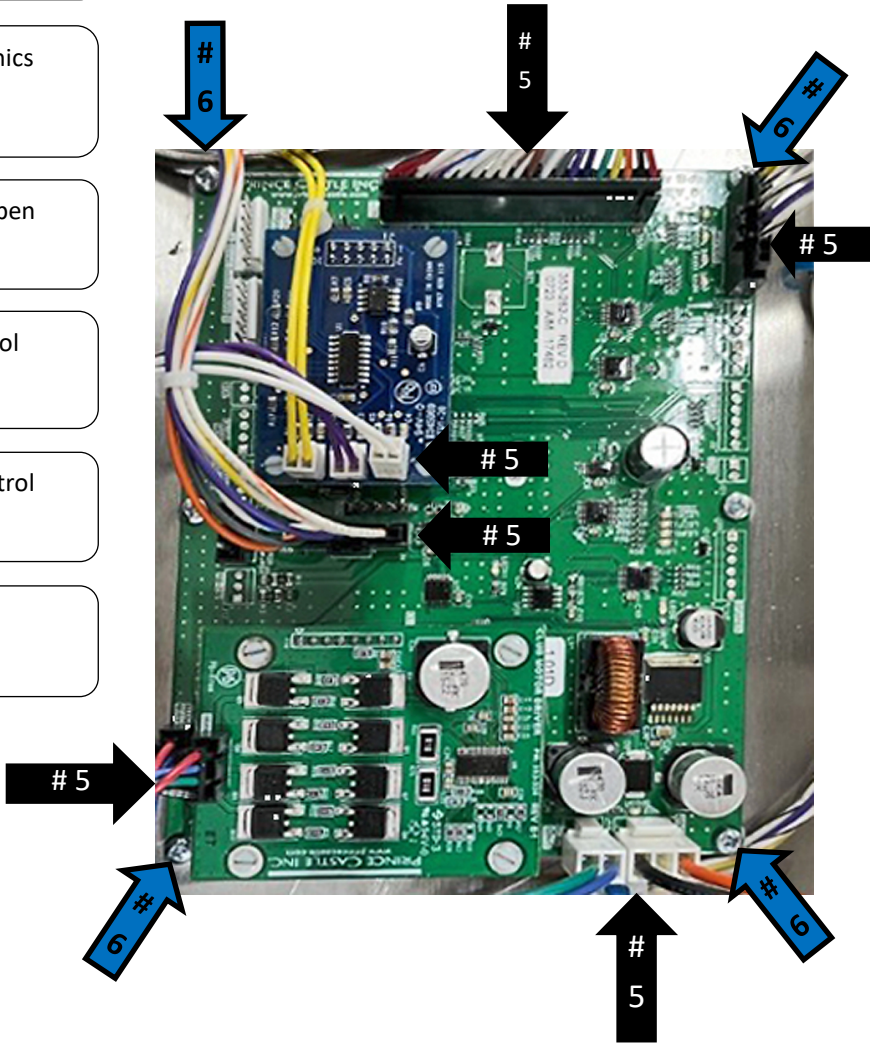
**3** Loosen the bottom screw to access the electronics tray. Reference the **Red Arrow**.

**4** Pull on the screw to slide the electronics tray open

**5** Remove the (10) connectors from master control board. Reference the **Black Arrows**.

**6** Remove (4) screws to unsecure the master control board. Reference the **Blue Arrows**.

**7** Remove the Board



### Remove/Replace PCB

**8** Install the new board

**9** Using (6) screws, secure the board onto the electronics tray

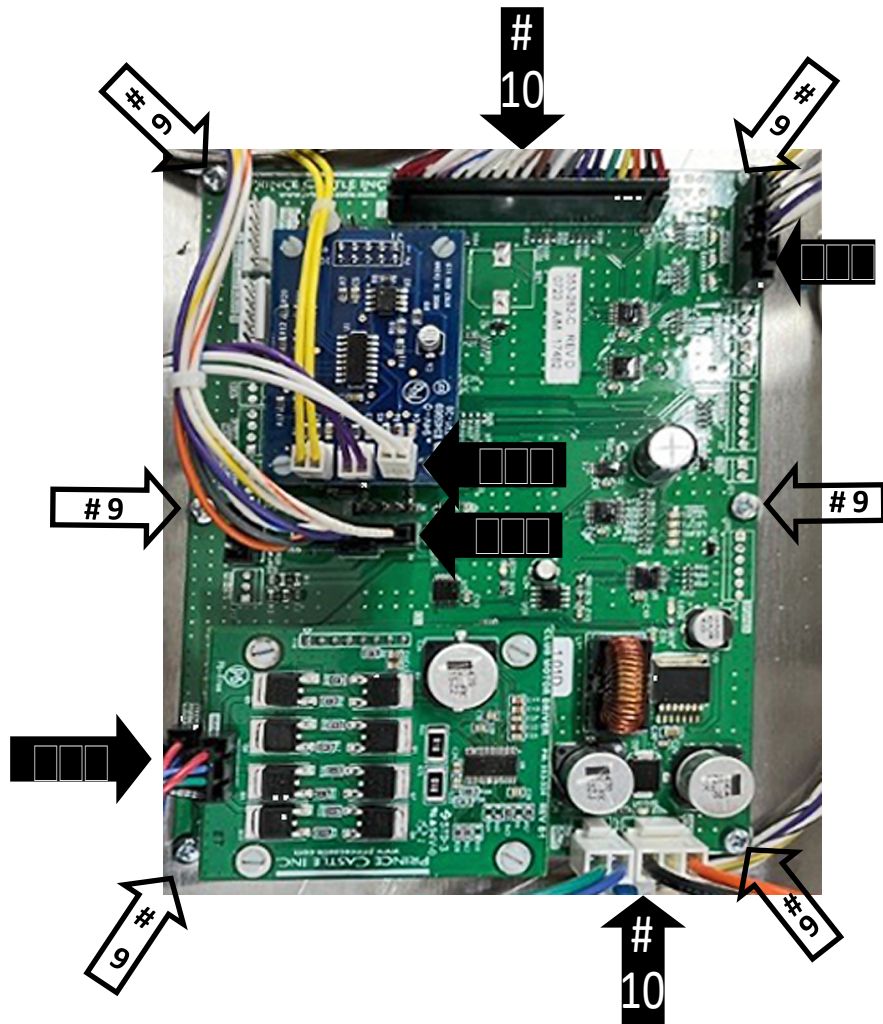
**10** Reconnect (10) connections onto board that were removed in step 5.

**11** Slide the electronics tray back into unit.

**12** Tighten the screw to secure the electronics tray.


**13** Re-install the bun landing zone to the unit

**14** Plug in Unit, ensure the unit is fully functional.

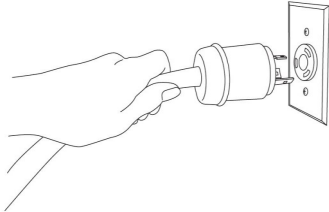


### Remove/Replace Relay

**1** Unplug the unit

 **WARNING**

Failure to disconnect power from the unit before servicing could result in severe bodily injury or death. The ON/OFF Switch does not disconnect incoming power to the unit.



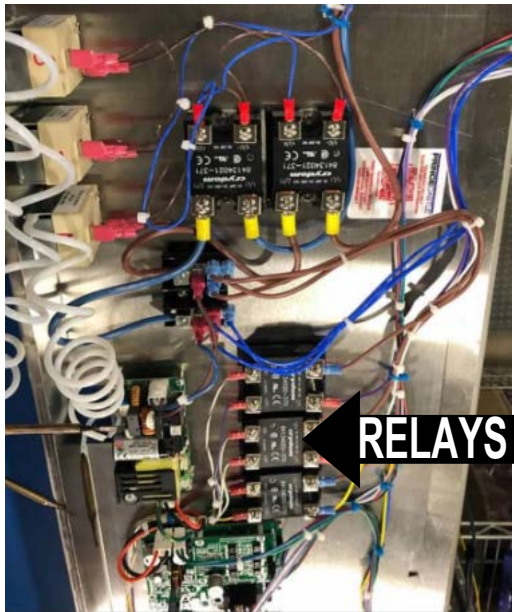
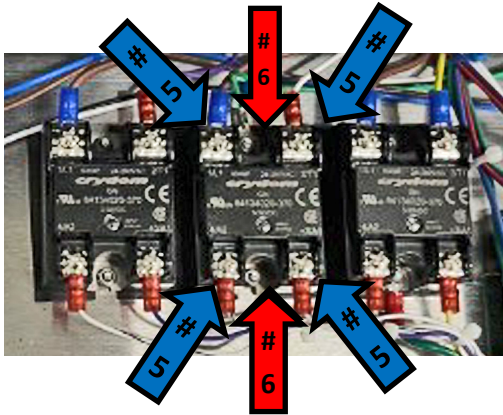
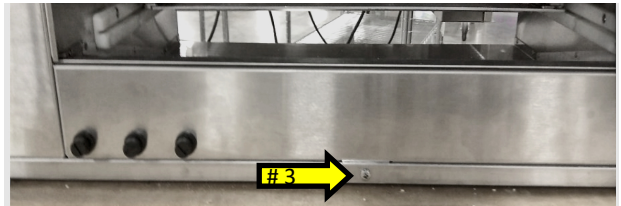
**2** Remove the bun landing zone from the unit

**3** Loosen the bottom screw to access the electronics tray. Refer to the **Yellow Arrow**

**4** Pull on the screw to slide the electronics tray open

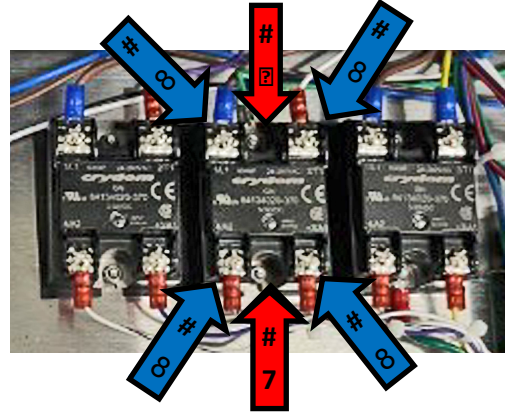
**5** Remove (4) connectors from relay (Note the position of each connector). Refer to the **Blue Arrows**

**6** Remove (2)- 3mm nuts to release the relay from the electronics tray. Refer to the **Red Arrows**



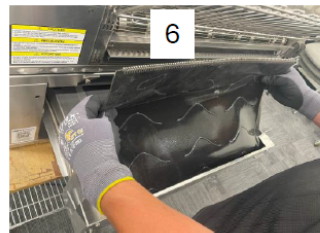
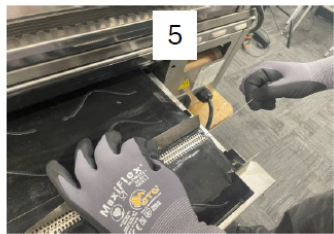
### Remove/Replace Relay

- 7 Install the relay using the (2)- 3mm nuts removed in Step 6
- 8 Install the (4) connectors that were removed in step 5 back onto the relay.
- 9 Install the relay using the (2)- 3mm nuts removed in Step 6
- 10 Slide the electronics tray back into unit.
- 11 Tighten the screw to secure the electronics tray.
- 12 Re-install the bun landing zone to the unit
- 13 Plug in Unit, ensure the unit is fully functional.



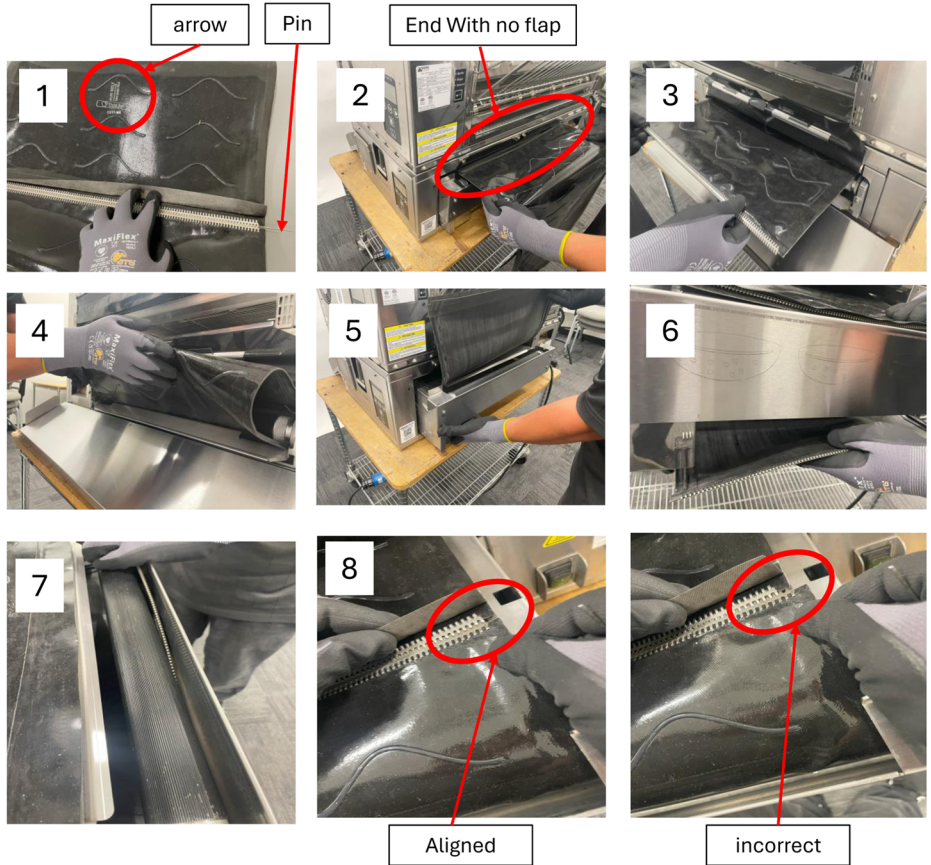
### Silicone belt removal process

1. Remove infeed rack.
2. Loosen the tension by pushing the roller in and down (left and right side) on the outfeed side.
3. Open conveyor.
4. Rotate belt to locate zipper with connecting pin.
5. Remove pin.
6. Pull silicone belt to remove.
7. Close Conveyor.



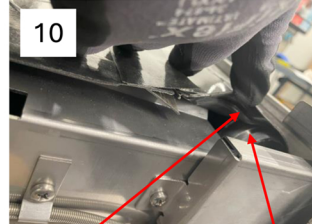
## Silicone Belt Install Procedure

1. Locate Zipper and connecting pin in new belt and remove pin. NOTE: printed arrow on belt, this indicates direction of belt rotation
2. Insert end of the belt without flap into the toaster from the infeed side. Arrow pointing to the inside of the toaster (insert half way to 2/3 of the belt).
3. Pull belt from out-feed of toaster.
4. Feed belt in between roller and bun deflector at the outfeed of toaster and push.
5. Open conveyor
6. From the infeed side of the toaster pull belt from the bottom.
7. feed it between roller and panel.
8. Pull belt and align both ends of belt.



### Silicone Belt Install Procedure (cont.)

9. Insert connecting pin all the way to the other end of the belt.
10. Check that the bead matches the roller.
11. Close conveyor.
12. Push roller (left and right side) at the outfeed of the toaster to set the tension back to the conveyor.
13. Install infeed rack



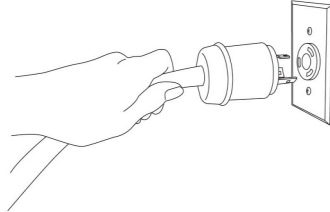
### Remove/Replace Motor and Belt Assembly

**1** Unplug the unit



#### WARNING

Failure to disconnect power from the unit before servicing could result in severe bodily injury or death. The ON/OFF Switch does not disconnect incoming power to the unit.



**2** Remove the In-Feed Rack

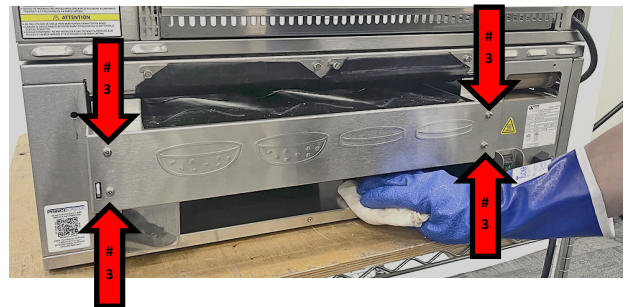
**3** Remove the front cover by removing the (4) screws

**4** Push in the release knob, then pull the conveyor assembly out

**5** On the left side of the conveyor assembly, remove the belt cover.

**6** On the underside of the conveyor assembly, remove the motor cover by unhooking the 4 tabs.

**7** Remove (4) 8mm nuts to remove motor, and release tension from belt.



### Remove/Replace Motor and Belt Assembly (Cont...)

**8** Reinstall Belt and Motor by securing the (4) 8mm nuts and (4) screws.

**9** Reinstall the motor cover on the underside of the conveyor assembly

**10** Reinstall the belt cover on the left side of the conveyor assembly

**11** Slide electronics tray back into the unit.

**12** Secure the front cover by installing the (4) screws previously removed in step 3.

**13** Secure (2) belt tensioner bolts on rear side of unit.

**14** Re-install the in-feed rack

**15** Plug in Unit, ensure the unit is fully functional.

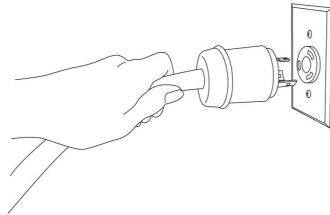
### Remove/Replace Display Assembly

**1** Unplug the unit



#### WARNING

Failure to disconnect power from the unit before servicing could result in severe bodily injury or death. The ON/OFF Switch does not disconnect incoming power to the unit.



**2** Remove the (2) Phillips screws to release the left side panel. Refer to the **Green Arrows**.

**3** Unplug the Display Harness. Refer to the **Red Arrow**.

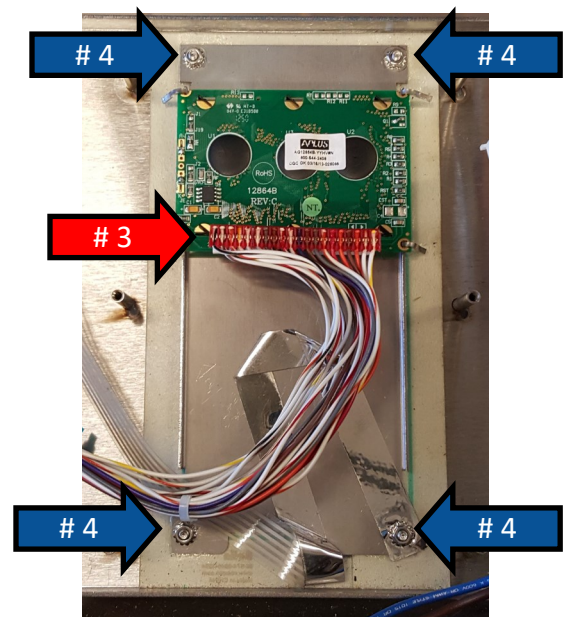
**4** Remove the (4) M3 nuts. Lift the display assembly off the control side panel. Refer to the **Blue Arrows**.

**5** Reinstall the display assembly by installing the (4) M3 nuts. Previously removed in step 4.

**6** Plug in the display harness. Previously removed in step 3.


**7** Secure the left side panel using the (2) Phillips screws, previously removed in step 2.

**8** Plug in Unit, ensure the unit is fully functional.

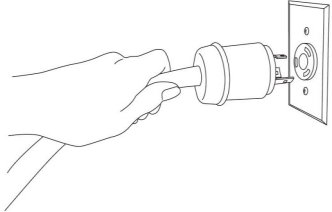


### Remove/Replace Timing Belt

**1** Unplug the unit.

 **WARNING**

Failure to disconnect power from the unit before servicing could result in severe bodily injury or death. The ON/OFF Switch does not disconnect incoming power to the unit.



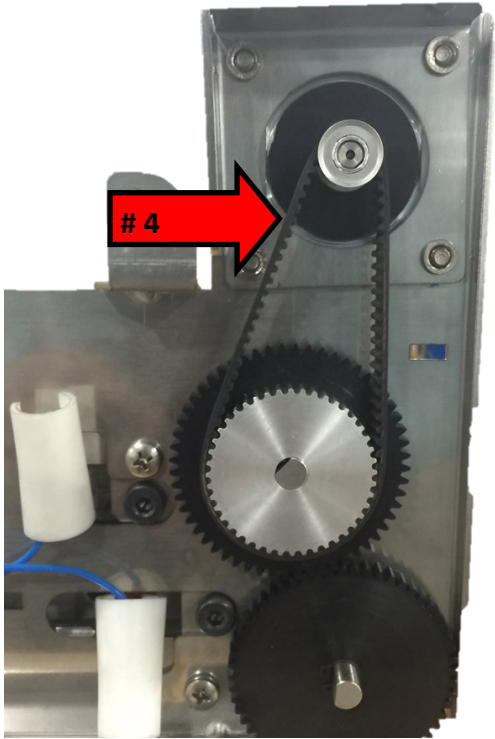
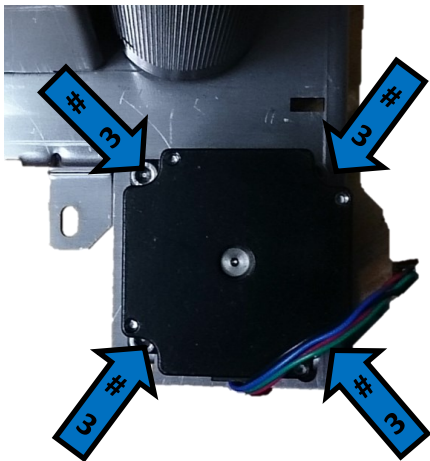
**4** Replace Belt.

**5** Tighten (4) motor bolts to apply tension to belt

**6** Plug in Unit, ensure the unit is fully functional.

**2** Loosen (4) motor bolts to lessen tension from belt. Refer to the **Blue Arrows**.

**3** Slide belt off gear assembly. Refer to the **Red Arrow**.



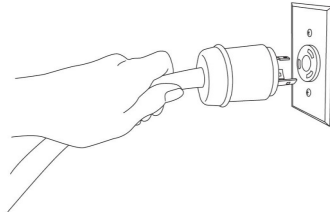
### Remove/Replace Club Probe

**1** Unplug the unit.



**WARNING**

Failure to disconnect power from the unit before servicing could result in severe bodily injury or death. The ON/OFF Switch does not disconnect incoming power to the unit.



**2** Refer to Page to remove club assembly and belt.

**3** Remove (2) gears from club assembly. Refer to the **Red Arrows**.

**4** Remove (3) Screws. Refer to the **Yellow Arrows**.

**5** Remove (2) Wires by removing (2) Phillips screws. Refer to the **Orange Arrows**.

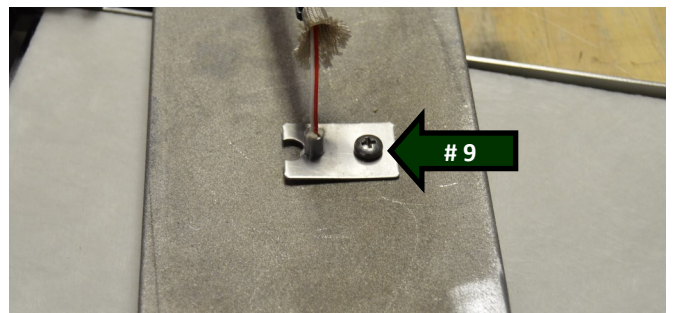
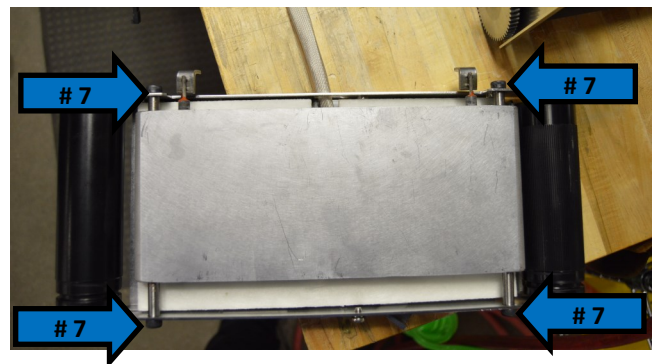
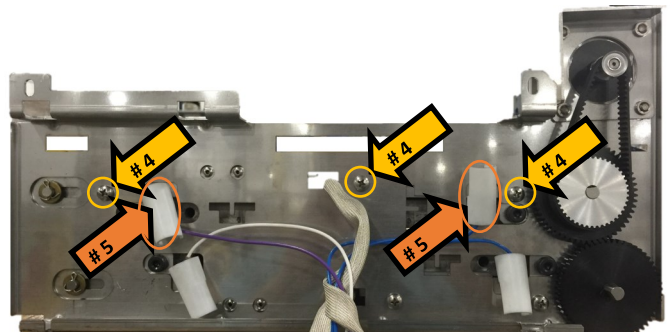
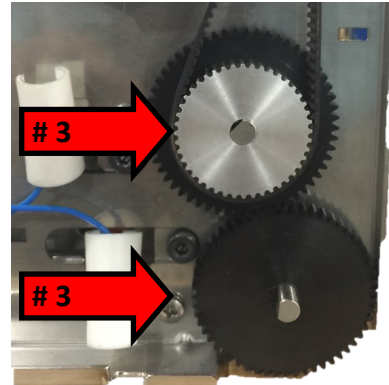
**6** Pull out platen assembly.

**7** Remove (4) side screws to remove platen from assembly. Note the length and position of screws. Refer to **Blue Arrows**.

**8** Lift platen off assembly.

**9** Remove Screw to remove probe from platen. Refer to the **Green Arrow**.

**10** Replace Faulty Probe. Reuse sleeve for new probe.



### Remove/Replace Club Probe

**11** After replacing the probe, reinstall screw to secure the probe to platen. Previously removed in Step 9.

**12** Place platen back onto assembly. Previously removed in Step 8.

**13** Replace (4) screws to secure platen to assembly. Previously removed in Step 7.

**14** Feed probe wire through slot in assembly

**15** Reinstall the conveyor platen assembly onto club assembly. Previously removed in Step 6.

**16** Replace (2) wires, Previously removed in Step 5.

**17** Replace (3) screws, Previously removed in Step 4.

**18** Replace (2) gears, Previously removed in Step 3.

**19** Tighten (4) motor bolts to apply tension to belt

**20** Refer to Page to reassemble club assembly and belt.

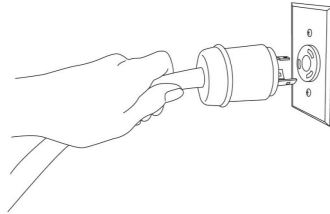
### Remove/Replace Club Assembly

**1** Unplug the unit.



#### WARNING

Failure to disconnect power from the unit before servicing could result in severe bodily injury or death. The ON/OFF Switch does not disconnect incoming power to the unit.



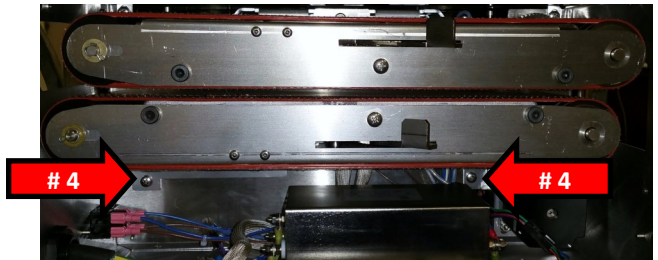
**2** Push in from each side right side panel to remove panel from unit. Refer to the **Blue Arrows**



**3** Remove (2) screws to release the bottom cover. Remove the bottom cover. Refer to the **Green Arrows**.

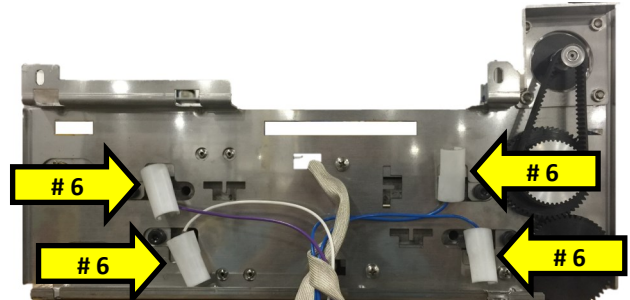


**4** Remove (2) screws to release the club assembly. Refer to the **Red Arrows**



**5** Slide the club assembly upwards, and out to remove the entire club assembly. Be cautious of any wiring.

**6** Using a slotted screwdriver, remove the (4) screws to release all connections from the club assembly. Refer to the **Yellow Arrows**.




### Remove/Replace Club Assembly

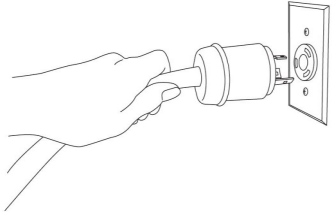
- 7** Using a slotted screwdriver, attach (4) wires to club assembly. Previously removed in step 6.
- 8** Slide club assembly back into unit. Make sure all tabs on the upper club assembly are aligned. Ensure all wiring is routed properly. Previously removed in step 5.
- 9** Install 2 screws to secure club assembly. Previously removed in step 4.
- 10** Re-install the cover, and (2) screws. Previously removed in step 3.
- 11** Re-install right side cover. Previously removed in step 2.
- 12** Plug in Unit, ensure the unit is fully functional.

### Remove/Replace Platen High Limit Switch

**1** Unplug the unit.

 **WARNING**

Failure to disconnect power from the unit before servicing could result in severe bodily injury or death. The ON/OFF Switch does not disconnect incoming power to the unit.



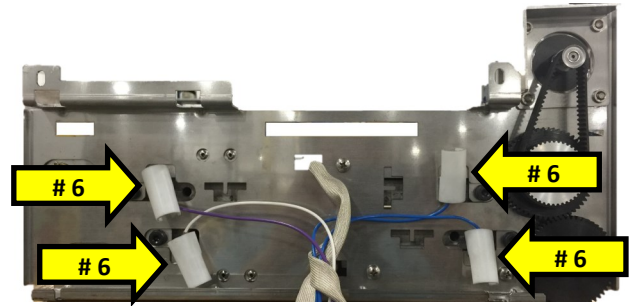
**2** Push in from each side right side panel to remove panel from unit. Refer to the **Blue Arrows**

**3** Remove (2) screws to release the bottom cover. Remove the bottom cover. Refer to the **Green Arrows**.

**4** Remove (4) screws to release the club assembly and top cover. Refer to the **Red Arrows**

**5** Slide the club assembly upwards, and out to remove the entire club assembly. Be cautious of any wiring.

**6** Using a slotted screwdriver, remove the (4) screws to release all connections from the club assembly. Refer to the **Yellow Arrows**.



### Remove/Replace Platen High Limit Switch (Continued)

**7** Open the Left Side panel by loosening the (2) Phillips screws. Refer to the **Blue Arrows**.

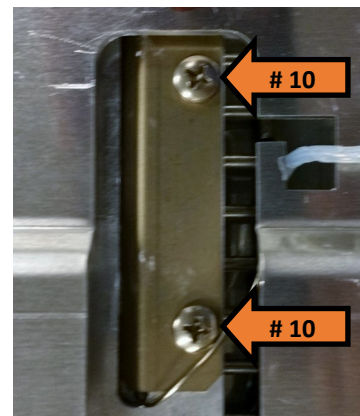


**8** Remove the (2) screws to release the top cover. Refer to the **Green Arrows**.



**9** Lift top cover off the unit.

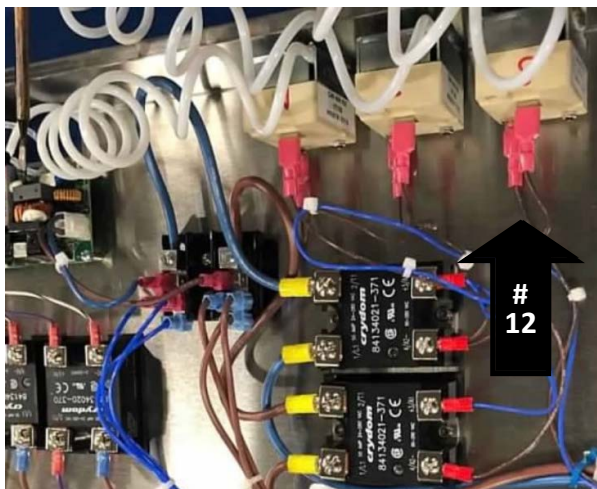
**10** Remove (2) screws to remove High Limit Switch bracket and release the high limit switch. Refer to the **Orange Arrows**.



**11** Loosen the bottom screw to access the electronics tray. Reference the **Red Arrow**.



**12** Remove (2) nuts to remove High Limit Switch and pull the high limit switch out of the unit. Refer to the **Black Arrow**.



### Remove/Replace Platen High Limit Switch (Continued)

**13** Reinstall the high limit switch. Previously removed in Step 12. Rewire high limit switch accordingly.

**14** Close the electronics tray. Previously opened in Step 11.

**15** Re-install the high limit switch bracket. Previously removed in Step 10.

**16** Re-install top cover onto unit. Previously removed in Step 9.

**17** Install the (2) Phillips screws on Left side of unit. Previously removed in Step 8.

**18** Close the left side panel by tightening the (2) Phillips screws. Previously removed in Step 7.

**19** Using a slotted screwdriver, reconnect all (4) connections on club assembly. Previously removed in Step 6.

**20** Re-install the club assembly, previously removed in Step 5.

**21** Re-install (4) Phillips screws to secure top cover and club assembly to unit. Previously removed in Step 4.

**22** Re-install lower club cover. Previously removed in Step 3.

**23** Re-install the right side panel. Previously removed in step 2.

**24** Plug in Unit, ensure the unit is fully functional.

### Allowable Labor Limits

Allowable Labor Limits		
<u>Procedure</u>	<u>Part Number</u>	<u>Max Labor Hours</u>
Remove/Replace PCB	353-262CS	0.5 Hours
Remove/Replace Relay	65-058S	0.5 Hours
Remove/Replace Silicone Belt	353-1421S	0.25 Hours
Remove/Replace Motor and Belt Assembly	353-241S & 353-357S	0.5 Hours
Remove/Replace Display Assembly	526-370S	0.5 Hours
Remove/Replace Timing Belt	353-1437	1.0 Hours
Remove/Replace Club Probe	527-468S OR 527-467S	1.0 Hours
Remove/Replace Club Assembly (Top or Bottom)	353-231S OR 353-233S	1.0 Hours
Remove/Replace Main Platen High Limit Switch	526-281S	0.5 Hours